



MHN-TD

MHN-TD 150W/730 RX7s 1CT/12

Double-ended quartz Metal-halide lamp

Warnings and Safety

- Use only in totally enclosed luminaire, even during testing (IEC61167, IEC 62035, IEC60598)
- The luminaire must be able to contain hot lamp parts if the lamp ruptures
- Control gear must include end-of-life protection (IEC61167, IEC 62035)
- A lamp breaking is extremely unlikely to have any impact on your health. If a lamp breaks, ventilate the room for 30 minutes and remove the parts, preferably with gloves. Put them in a sealed plastic bag and take it to your local waste facilities for recycling. Do not use a vacuum cleaner.

Product data

General Information		Footnotes HID 2	
Cap-Base	RX7S [RX7s]		Lamp color characteristics may change after long accumulate operating time.
Operating Position	P45 [Parallel +/-45D or Horizontal(HOR)]		Performance may not be satisfactory unless operated within specified operating positions. (374)
Life to 5% Failures (Min)	4000 h		
Life to 5% Failures (Nom)	5000 h		
Life to 20% Failures (Min)	6500 h		
Life to 20% Failures (Nom)	8000 h		
Life to 50% Failures (Min)	8500 h		
Life to 50% Failures (Nom)	10500 h		
ANSI Code HID	M81/E		
Footnotes HID 1	Color characteristics may vary somewhat from one lamp type to another. Time should be allowed for the lamp to stabilize in color when it is turned on for the first time or if for any reason its operating position is changed. This may require several hours' operation, with more than one start. Lamp color and output may change temporarily if the lamp is subjected to excess vibration or shock.		
Light Technical			
Color Code	730 [CCT of 3000K]		
Luminous Flux (Rated) (Min)	12510 lm		
Luminous Flux (Rated) (Nom)	13900 lm		
Color Designation	Warm White (WW)		
Lumen Maintenance 10000 h (Min)	50 %		
Lumen Maintenance 10000 h (Nom)	60 %		
Lumen Maintenance 2000 h (Min)	69 %		
Lumen Maintenance 2000 h (Nom)	75 %		
Lumen Maintenance 5000 h (Min)	58 %		
Lumen Maintenance 5000 h (Nom)	65 %		
Chromaticity Coordinate X (Nom)	434		

MHN-TD

Chromaticity Coordinate Y (Nom)	400
Correlated Color Temperature (Nom)	3000 K
Luminous Efficacy (Rated) (Min)	81 lm/W
Luminous Efficacy (rated) (Nom)	90 lm/W
Color Rendering Index (Nom)	70

Operating and Electrical

Power (Nom)	155 W
Lamp Current Run-Up (Max)	2.4 A
Lamp Current (EM) (Nom)	1.8 A
Ignition Supply Voltage (Max)	198 V
Ignition Peak Voltage (Max)	5000 V
Ignition Supply Voltage (Min)	198 V
Ignition Peak Voltage (Min)	3500 V
Voltage (Max)	106 V
Voltage (Min)	86 V
Voltage (Nom)	96 V

Controls and Dimming

Dimmable	No
----------	----

Mechanical and Housing

Bulb Finish	Clear
-------------	-------

Cap-Base Information	-
----------------------	---

Approval and Application

Energy Efficiency Label (EEL)	A+
Mercury (Hg) Content (Nom)	18 mg
Energy Consumption kWh/1000 h	171 kWh

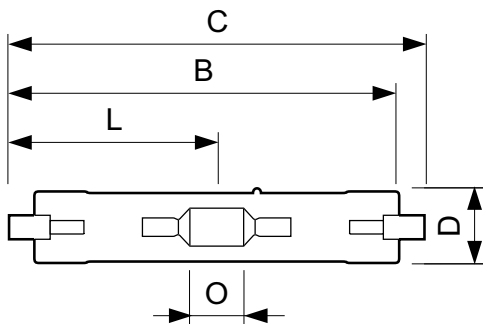
Luminaire Design Requirements

Bulb Temperature (Max)	650 °C
Pinch Temperature (Max)	280 °C

Product Data

Full product code	871829121534900
Order product name	MHN-TD 150W/730 RX7s 1CT/12
EAN/UPC - Product	8718291215349
Order code	928482500092
Numerator - Quantity Per Pack	1
Numerator - Packs per outer box	12
Material Nr. (12NC)	928482500092
Net Weight (Piece)	0.028 kg
ILCOS Code	MD/UB-150/730-H-RX7s-25/135.4

Dimensional drawing

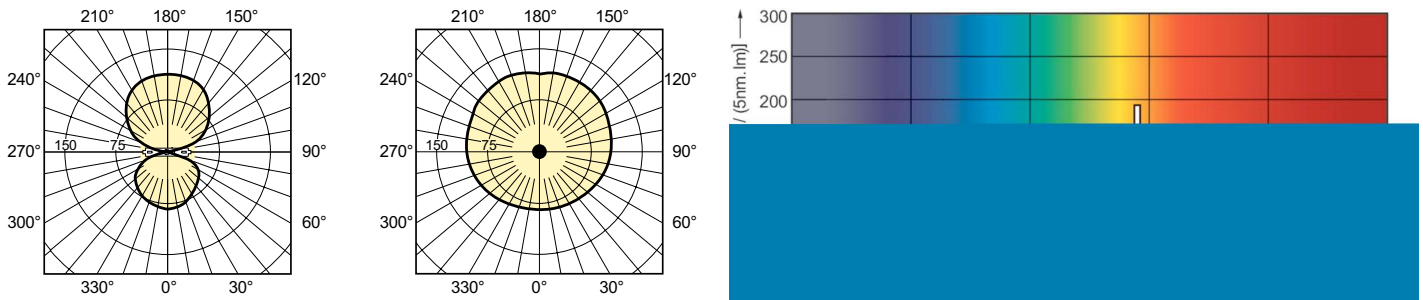


MHN-TD 150W/730 RX7s

Product	D (max)	D	O	C (max)
MHN-TD 150W/730 RX7s 1CT/12	23.0 mm	0.89 in	17.8 mm	135.4 mm

MHN-TD

Photometric data



LDLD_MHN-TD-Light distribution diagram

