



Essential LED

LEDspot GU10 4.5-50W 865 36D 110-130V

Essential LED is an affordable LED spot lamp that is suitable for replacing halogen spot lamps. It provides a natural lighting effect as well as instant energy savings – an environmentally friendly solution. The Philips Essential LED family is designed for spot and general lighting applications in the hospitality, retail and home segments.

Product data

General Information	
Cap-Base	GU10 [GU10]
Nominal lifetime	15,000 hour(s)
Switching Cycle	50,000
Lighting Technology	LED
EU RoHS compliant	Yes
Light Technical	
Color Code	865 [CCT of 6500K]
Beam Angle (Nom)	36 degree(s)
Luminous Flux	370 lm
Luminous Intensity (Nom)	925 cd
Color Designation	Cool Daylight
Correlated Color Temperature (Nom)	6500 K
Luminous Efficacy (rated) (Nom)	82.22 lm/W
Color Consistency	<6
Color rendering index (CRI)	80
LLMF At End Of Nominal Lifetime (Nom)	70 %
Operating and Electrical	
Line Frequency	50 to 60 Hz
Input Frequency	50 to 60 Hz
Power Consumption	4.5 W

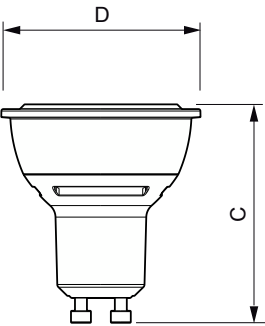
Lamp Current (Nom)	38 mA
Wattage Equivalent	50 W
Starting Time (Nom)	0.5 s
Warm-up time to 60% light	0.5 s
Power Factor (Fraction)	0.9
Voltage (Nom)	120 V
Temperature	
T-Case Maximum (Nom)	86 °C
Controls and Dimming	
Dimmable	No
Mechanical and Housing	
Bulb Shape	PAR16 [PAR 2 inch/50mm]
Approval and Application	
Suitable For Accent Lighting	Yes
Energy Consumption kWh/1000 h	5 kWh
Product Data	
Order product name	LEDspot GU10 4.5-50W 865 36D 110-130V
Full product name	LEDspot GU10 4.5-50W 865 36D 110-130V

Essential LED

Full product code	871829176880700
Order code	929000279241
Material Nr. (12NC)	929000279241
Numerator - Quantity Per Pack	1
EAN/UPC - Product/Case	8718291768807

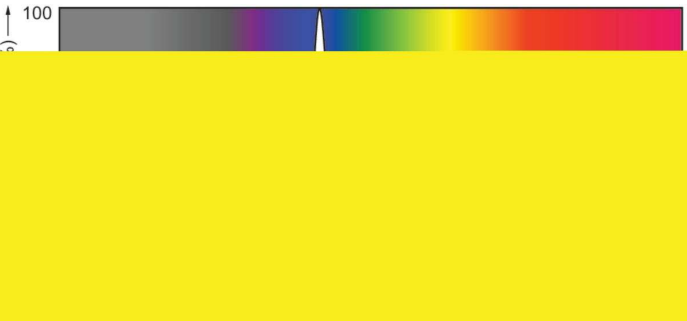
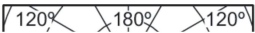
Numerator - Packs per outer box	6
EAN/UPC - Case	8718291768814

Dimensional drawing



Product	D	C
LEDspot GU10 4.5-50W 865 36D 110-130V	50 mm	55 mm

Photometric data



Light Distribution Diagram - LEDspot GU10 4.5-50W 865 36D 110-130V

Spectral Power Distribution Colour - LEDspot GU10 4.5-50W 865 36D 110-130V

