



MASTER LEDtube InstantFit HF T8

MAS LEDtube HF 1200mm SO 16.5W 840 T8 RS

Philips MASTER LEDtube InstantFit T8 integrates a LED light source into a traditional fluorescent form factor. Its unique design creates a perfectly uniform visual appearance which cannot be distinguished from traditional fluorescent. Philips MASTER LEDtube InstantFit T8 is the ideal solution for customers who have higher light requirements and want to maximize value over lifetime. Full energy savings & longer lifetime result in attractive payback times and TCO benefits.

Warnings and Safety

- NOTES: The overall energy efficiency and light distribution of any installation that uses these lamps are determined by the design of the installation.

Product data

General Information	
Cap-Base	G13 [Medium Bi-Pin Fluorescent]
Nominal lifetime	50,000 hour(s)
Switching Cycle	50,000
Lighting Technology	LED
EU RoHS compliant	Yes
Light Technical	
Color Code	840 [CCT of 4000K]
Beam Angle (Nom)	160 degree(s)
Luminous Flux	1,600 lm
Correlated Color Temperature (Nom)	4000 K
Color Consistency	<6
Color rendering index (CRI)	83

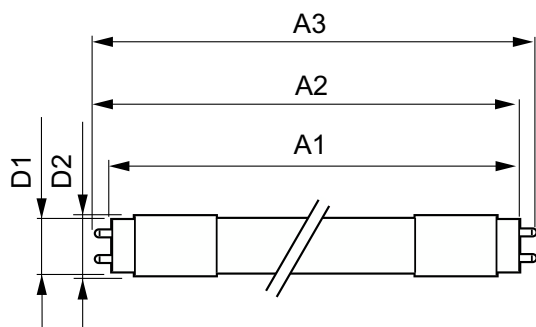
LLMF At End Of Nominal Lifetime (Nom) 70 %	
Operating and Electrical	
Line Frequency	25000-75000 Hz
Input Frequency	25000-75000 Hz
Power Consumption	16.5 W
Starting Time (Nom)	0.5 s
Warm-up time to 60% light	Instant full light s
Power Factor (Fraction)	0.9
Voltage (Nom)	50-100 V
Temperature	
Ambient temperature range	-20 °C to 35 °C
T-Case Maximum (Nom)	45 °C

MASTER LEDtube InstantFit HF T8

Controls and Dimming	
Dimmable	No
Mechanical and Housing	
Product Length	1,200 mm
Approval and Application	
Energy Saving Product	Yes
Suitable For Accent Lighting	No
Approval Marks	CE marking RoHS compliance KEMA Keur certificate
Energy Consumption kWh/1000 h	20 kWh
Product Data	
Order product name	MAS LEDtube HF 1200mm SO 16.5W 840 T8 RS

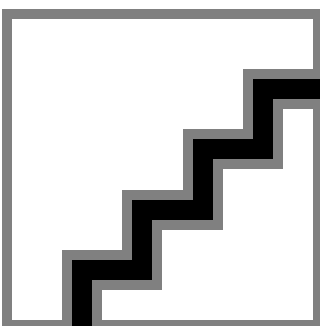
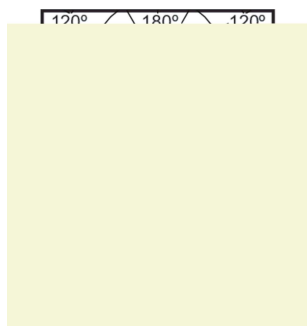
Full product name	MAS LEDtube HF 1200mm SO 16.5W 840 T8 RS
Full product code	871829172885600
Order code	929000284402
Material Nr. (12NC)	929000284402
Numerator - Quantity Per Pack	1
EAN/UPC - Product/Case	8718291728856
Numerator - Packs per outer box	10
EAN/UPC - Case	8718291728863

Dimensional drawing



Product	D1	D2	A1	A2	A3
MAS LEDtube HF 1200mm SO 16.5W 840 T8 RS	25.68 mm	28 mm	1,198.0 mm	1,205.0 mm	1,212.0 mm

Photometric data



Light Distribution Diagram - MAS LEDtube HF 1200mm SO 16.5W 840 T8 RS

Spectral Power Distribution Colour - MAS LEDtube HF 1200mm SO 16.5W 840 T8 RS

MASTER LEDtube InstantFit HF T8

