



MASTER LEDtube EM/ Mains T8

MAS LEDtube STD 1200mm 14.5W865 T8 I

The Philips MASTER LEDtube integrates a LED light source into a traditional fluorescent form factor. Its unique design creates a perfectly uniform visual appearance which cannot be distinguished from traditional fluorescent. This product is the ideal solution for up lighting in general lighting applications.

Warnings and Safety

- -
- -

Product data

General Information	
Cap-Base	G13 [Medium Bi-Pin Fluorescent]
Nominal lifetime	40,000 hour(s)
Switching Cycle	50,000
Lighting Technology	LED
EU RoHS compliant	Yes
Light Technical	
Color Code	865 [CCT of 6500K]
Beam Angle (Nom)	150 degree(s)
Luminous Flux	1,600 lm
Correlated Color Temperature (Nom)	6500 K
Color Consistency	<6
Color rendering index (CRI)	83
LLMF At End Of Nominal Lifetime (Nom)	70 %

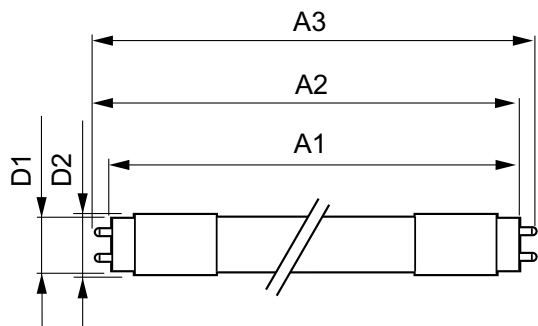
Operating and Electrical	
Line Frequency	50 to 60 Hz
Input Frequency	50 to 60 Hz
Power Consumption	14.5 W
Starting Time (Nom)	0.5 s
Warm-up time to 60% light	Instant full light s
Power Factor (Fraction)	0.9
Voltage (Nom)	220-240 V
Temperature	
Ambient temperature range	-20 °C to 45 °C
T-Case Maximum (Nom)	45 °C
Controls and Dimming	
Dimmable	No

MASTER LEDtube EM/Mains T8

Mechanical and Housing	
Product Length	1,200 mm
Approval and Application	
Energy Saving Product	Yes
Suitable For Accent Lighting	No
Approval Marks	CE marking RoHS compliance KEMA Keur certificate
Energy Consumption kWh/1000 h	14.5 kWh
Product Data	
Order product name	MAS LEDtube STD 1200mm 14.5W865 T8 I

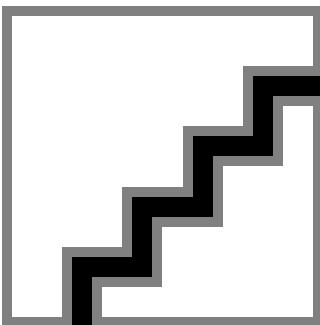
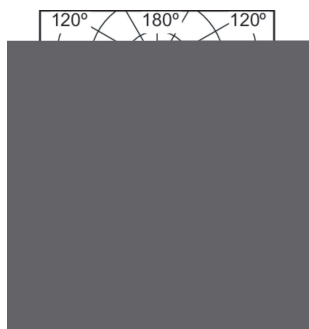
Full product name	MAS LEDtube STD 1200mm 14.5W865 T8 I
Full product code	871829179314400
Order code	929001119108
Material Nr. (12NC)	929001119108
Numerator - Quantity Per Pack	1
EAN/UPC - Product/Case	8718291793144
Numerator - Packs per outer box	10
EAN/UPC - Case	8718291793151

Dimensional drawing



Product	D1	D2	A1	A2	A3
MAS LEDtube STD 1200mm 14.5W865 T8 I	25.68 mm	28 mm	1,198.0 mm	1,205.0 mm	1,212.0 mm

Photometric data



Light Distribution Diagram - MAS LEDtube STD 1200mm 14.5W865 T8 I

Spectral Power Distribution Colour - MAS LEDtube STD 1200mm 14.5W865 T8 I

MASTER LEDtube EM/Mains T8

