



MasterClass LEDtube InstantFit T8

10T8/48-3000 IF 10/1

The Masterclass LED Type A - Ballast Driven (Plug and Play) InstantFit TLED is a great LED solution suitable for replacing T8 fluorescent lamps, using an existing ballast. Specific lamps can also be used on Philips Xitanium driver for Type C applications.

Product data

General Information	
Cap-Base	G13 [Medium Bi-Pin Fluorescent]
Nominal lifetime	50,000 hour(s)
Switching Cycle	50,000
Lighting Technology	LED
EU RoHS compliant	Yes
Light Technical	
Color Code	830 [CCT of 3000K]
Luminous Flux	1,500 lm
Correlated Color Temperature (Nom)	3000 K
Color Consistency	<6
Color rendering index (CRI)	82
LLMF At End Of Nominal Lifetime (Nom)	70 %
Operating and Electrical	
Line Frequency	50 to 60 Hz
Input Frequency	50 to 60 Hz
Power Consumption	10 W
Starting Time (Nom)	0.5 s

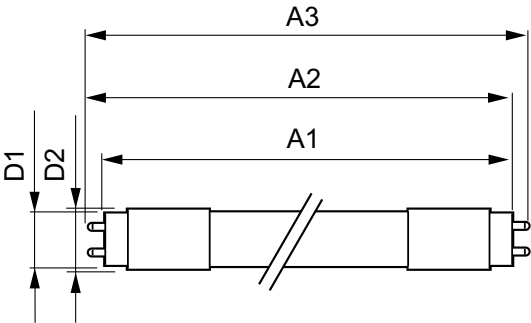
Warm-up time to 60% light	0.5 s
Power Factor (Fraction)	0.9
Voltage (Nom)	120-277, 347 V
Temperature	
Ambient temperature range	-20 °C to 45 °C
T-Case Maximum (Nom)	40 °C
Controls and Dimming	
Dimmable	No
Mechanical and Housing	
Product Length	1,200 mm
Approval and Application	
Energy Saving Product	Yes
Suitable For Accent Lighting	No
Approval Marks	UL certificate RoHS compliance
Energy Consumption kWh/1000 h	- kWh

MasterClass LEDtube InstantFit T8

Product Data	
Order product name	10T8/48-3000 IF 10/1
Full product name	10T8/48-3000 IF 10/1
Order code	929001123964
Material Nr. (12NC)	929001123964
Numerator - Quantity Per Pack	1

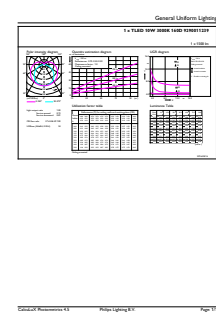
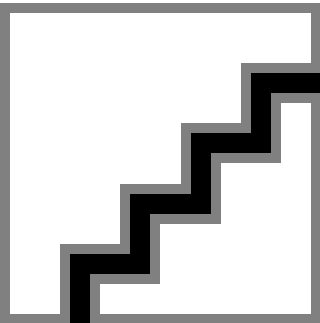
EAN/UPC - Product/Case	046677472191
Numerator - Packs per outer box	10
EAN/UPC - Case	50046677468267

Dimensional drawing



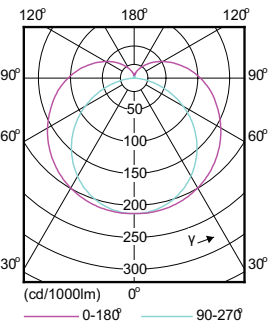
Product	D1	D2	A1	A2	A3
10T8/48-3000 IF 10/1	25.68 mm	28 mm	1,198.0 mm	1,205.0 mm	1,212.0 mm

Photometric data



Spectral Power Distribution Colour - 10T8/48-3000 IF 10/1

General uniform lighting - 10T8/48-3000 IF 10/1



Light Distribution Diagram - 10T8/48-3000 IF 10/1

MasterClass LEDtube InstantFit T8

