



T8

10T8/48-3500 IF 10/1 TAA/NAFTA

Our TLEDs are available in InstantFit (Type A / Type C) or MainsFit (Ballast bypass / Type B) versions. The InstantFit lamps work on a broad variety of ballasts and LED drivers. Only InstantFit has over 15,000 lamp & ballast combinations delivering even light output, energy savings and a long lifetime. Our MainsFit products feature a double-ended design, simplifying installation while a proprietary safety circuit minimizes a shock risk. Lamp sizes range from 2-foot to 8-foot and U-bend with a variety of lumen outputs.

Product data

General Information	
Base	G13 [Medium Bi-Pin Fluorescent]
EU RoHS compliant	Yes
Nominal Lifetime (Nom)	50000 h
Switching Cycle	50000X
Light Technical	
Color Code	835 [CCT of 3500K]
Beam Angle (Nom)	180 °
Initial lumen (Nom)	1500 lm
Color Designation	White (WH)
Correlated Color Temperature (Nom)	3500 K
Luminous Efficacy (rated) (Nom)	150.00 lm/W
Color Consistency	<6
Color Rendering Index (Nom)	82
LLMF At End Of Nominal Lifetime (Nom)	70 %
Operating and Electrical	
Input Frequency	50 to 60 Hz
Power (Rated) (Nom)	10 W

Starting Time (Nom)	0.5 s
Warm Up Time to 60% Light (Nom)	0.5 s
UL Type	Type A - works on ballast
Power Factor (Nom)	0.9
Voltage (Nom)	120-277, 347 V

Temperature	
T-Ambient (Max)	45 °C
T-Ambient (Min)	-20 °C
T-Storage (Max)	65 °C
T-Storage (Min)	-40 °C
T-Case Maximum (Nom)	40 °C

Controls and Dimming	
Dimmable	No

Mechanical and Housing	
Bulb Material	Plastic
Product Length	48 in

T8

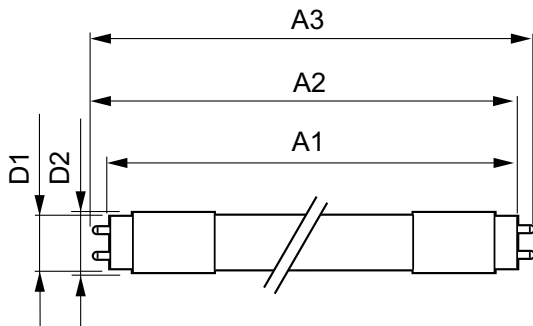
Bulb Shape	Tube, double-ended
Approval and Application	
Energy Efficiency Label (EEL)	Not applicable
Energy Saving Product	Yes
Approbation Marks	UL certificate RoHS compliance DLC compliance
Energy Consumption kWh/1000 h	- kWh
Energy Certifications	DLC Standard

EAN/UPC - Product	046677472610
Order code	469577
Numerator - Quantity Per Pack	1
Numerator - Packs per outer box	10
Material Nr. (12NC)	929001124084
Net Weight (Piece)	0.001 kg
Model Number	9290011240C

Product Data

Order product name	10T8/48-3500 IF 10/1 TAA/NAFTA
--------------------	--------------------------------

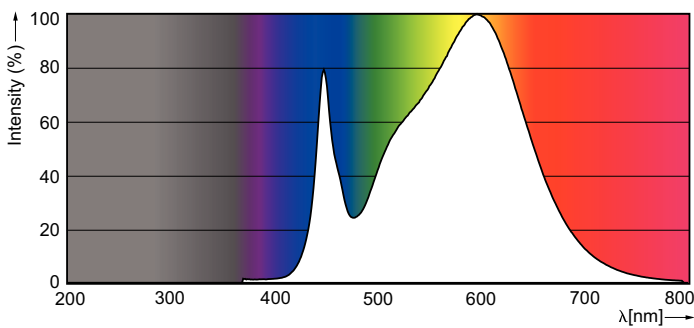
Dimensional drawing



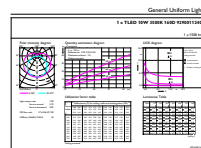
LEDtube 1200mm 12W G13/835

Product	D1	D2	A1	A2	A3
10T8/48-3500 IF 10/1 TAA/NAFTA	25.68 mm	28 mm	1198.0 mm	1205.0 mm	1212.0 mm

Photometric data

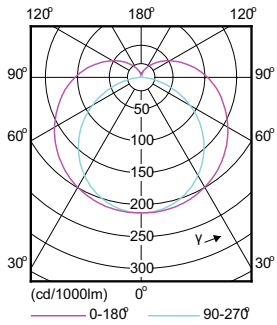


LEDtube 1200mm 12W G13 835 1500lm



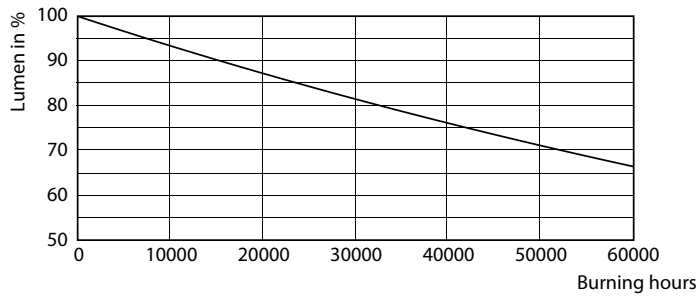
LEDtube 1200mm 12W G13 835 1500lm

Photometric data

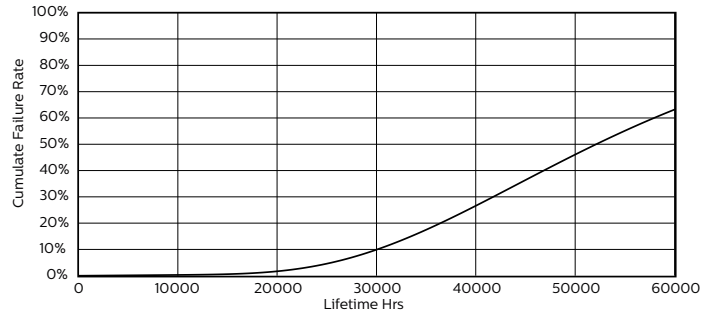


LEDtube 1200mm 12W G13 835 1500lm

Lifetime



LEDtube HF 1500mm 26W G5 T5



LEDtube 1200mm 14-32W G13

