



MasterClass LEDtube InstantFit T8

10T8/48-5000 IF 10/1

The Masterclass LED Type A - Ballast Driven (Plug and Play) InstantFit TLED is a great LED solution suitable for replacing T8 fluorescent lamps, using an existing ballast. Specific lamps can also be used on Philips Xitanium driver for Type C applications.

Product data

General Information		Starting Time (Nom)	
Cap-Base	G13 [Medium Bi-Pin Fluorescent]		0.5 s
Main Application	Industrial	Warm Up Time to 60% Light (Nom)	0.5 s
Nominal Lifetime (Nom)	50000 h	Power Factor (Nom)	0.9
Switching Cycle	50000X	Voltage (Nom)	120-277, 347 V
B50L70	50000 h		
Light Technical		Temperature	
Color Code	850 [CCT of 5000K]	T-Ambient (Max)	45 °C
Luminous Flux (Nom)	1600 lm	T-Ambient (Min)	-20 °C
Luminous Flux (Rated) (Nom)	1600 lm	T-Storage (Max)	65 °C
Correlated Color Temperature (Nom)	5000 K	T-Storage (Min)	-40 °C
Color Consistency	<6	T-Case Maximum (Nom)	40 °C
Color Rendering Index (Nom)	82		
LLMF At End Of Nominal Lifetime (Nom)	70 %	Controls and Dimming	
		Dimmable	No
		Mechanical and Housing	
		Product Length	1200 mm
		Approval and Application	
		Energy Saving Product	Yes
Operating and Electrical			
Input Frequency	50 to 60 Hz		
Power (Rated) (Nom)	10 W		
Lamp Current (Nom)	140 mA		

MasterClass LEDtube InstantFit T8

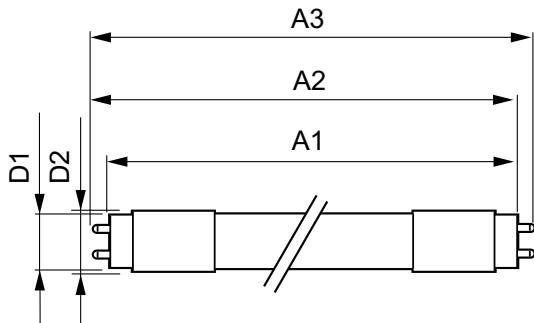
Suitable For Accent Lighting	No
Approval Marks	UL certificate RoHS compliance DLC compliance
Energy Consumption kWh/1000 h	- kWh

Product Data

Order product name	10T8/48-5000 IF 10/1
EAN/UPC - Product	046677472221

Order code	929001124264
Numerator - Quantity Per Pack	1
Numerator - Packs per outer box	10
Material Nr. (12NC)	929001124264
Net Weight (Piece)	0.230 kg

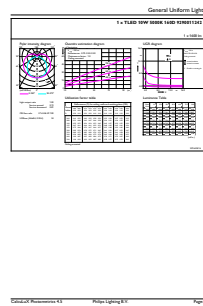
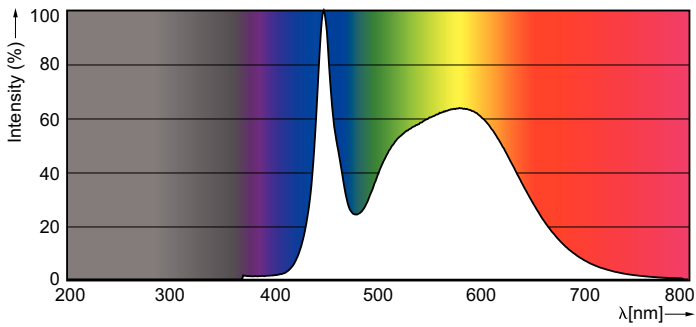
Dimensional drawing



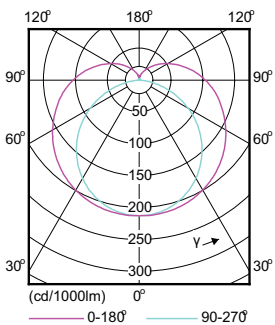
LEDtube 1200mm 12W G13/850

Product	D1	D2	A1	A2	A3
10T8/48-5000 IF 10/1	25.68 mm	28 mm	1198.0 mm	1205.0 mm	1212.0 mm

Photometric data



LEDtube 1200mm 12W G13 850 1650lm



MasterClass LEDtube InstantFit T8

