



MASTER LEDtube EM/ Mains T8

MASTER LEDtube STD 1200mm 20W840 T8 I

The Philips MASTER LEDtube integrates a LED light source into a traditional fluorescent form factor. Its unique design creates a perfectly uniform visual appearance which cannot be distinguished from traditional fluorescent. For those that are looking for value for money within limited budget and re-lamping efforts for better light effect and lifetime.

Warnings and Safety

• –

Product data

General Information	
Cap-Base	G13 [Medium Bi-Pin Fluorescent]
Nominal lifetime	40,000 hour(s)
Switching Cycle	50,000
Lighting Technology	LED
EU RoHS compliant	Yes
Light Technical	
Color Code	840 [CCT of 4000K]
Beam Angle (Nom)	150 degree(s)
Luminous Flux	2,100 lm
Correlated Color Temperature (Nom)	4000 K
Color Consistency	<6
Color rendering index (CRI)	83
LLMF At End Of Nominal Lifetime (Nom)	70 %

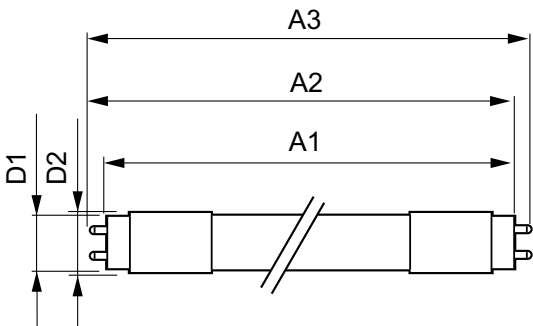
Operating and Electrical	
Line Frequency	50 to 60 Hz
Input Frequency	50 to 60 Hz
Power Consumption	20 W
Starting Time (Nom)	0.5 s
Warm-up time to 60% light	Instant full light s
Power Factor (Fraction)	0.9
Voltage (Nom)	220-240 V
Temperature	
Ambient temperature range	-20 °C to 45 °C
T-Case Maximum (Nom)	50 °C
Controls and Dimming	
Dimmable	No

MASTER LEDtube EM/Mains T8

Mechanical and Housing	
Product Length	1,200 mm
Approval and Application	
Energy Saving Product	Yes
Suitable For Accent Lighting	No
Approval Marks	CE marking RoHS compliance KEMA Keur certificate
Energy Consumption kWh/1000 h	20 kWh
Product Data	
Order product name	MAS LEDtube STD 1200mm 20W840 T8 I

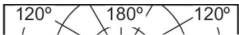
Full product name	MASTER LEDtube STD 1200mm 20W840 T8 I
Full product code	871869642188800
Order code	42188800
Material Nr. (12NC)	929001126908
Numerator - Quantity Per Pack	1
EAN/UPC - Product/Case	8718696421888
Numerator - Packs per outer box	10
EAN/UPC - Case	8718696421895

Dimensional drawing

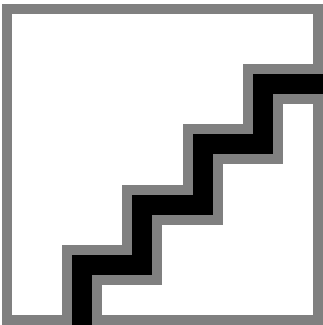


Product	D1	D2	A1	A2	A3
MAS LEDtube STD 1200mm 20W840 T8 I	25.68 mm	28 mm	1,198.0 mm	1,205.0 mm	1,212.0 mm

Photometric data



Light Distribution Diagram - MAS LEDtube STD 1200mm 20W840 T8 I



Spectral Power Distribution Colour - MAS LEDtube STD 1200mm 20W840 T8 I

MASTER LEDtube EM/Mains T8

