



MASTER LEDtube EM/ Mains T8

MASTER LEDtube 1200mm UO 18W 830 T8 RS

The Philips MASTER LEDtube integrates a LED light source into a traditional fluorescent form factor. Its unique design creates a perfectly uniform visual appearance which cannot be distinguished from traditional fluorescent. For those that are looking for value for money within limited budget and re-lamping efforts for better light effect and lifetime.

Warnings and Safety

• –

Product data

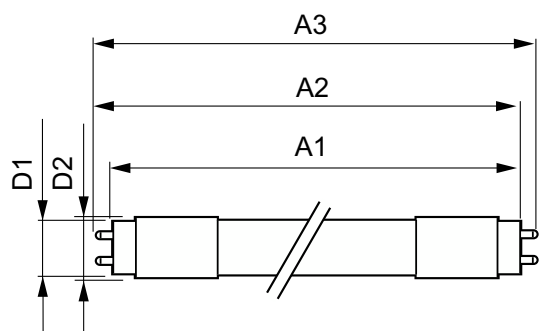
General Information		Operating and Electrical	
Cap-Base	G13 [Medium Bi-Pin Fluorescent]	Line Frequency	50 to 60 Hz
Nominal lifetime	50,000 hour(s)	Input Frequency	50 to 60 Hz
Switching Cycle	50,000	Power Consumption	18 W
Lighting Technology	LED	Lamp Current (Max)	82 mA
EU RoHS compliant	Yes	Lamp Current (Min)	75 mA
Light Technical		Starting Time (Nom)	0.5 s
Color Code	830 [CCT of 3000K]	Warm-up time to 60% light	0.1 s
Beam Angle (Nom)	160 degree(s)	Power Factor (Fraction)	0.9
Luminous Flux	2,300 lm	Voltage (Nom)	220-240 V
Correlated Color Temperature (Nom)	3000 K	Temperature	
Luminous Efficacy (rated) (Nom)	128 lm/W	Ambient temperature range	-20 °C to 35 °C
Color Consistency	<6	T-Case Maximum (Nom)	55 °C
Color rendering index (CRI)	83		
LLMF At End Of Nominal Lifetime (Nom)	70 %		

MASTER LEDtube EM/Mains T8

Controls and Dimming	
Dimmable	No
Mechanical and Housing	
Product Length	1,200 mm
Approval and Application	
Energy Saving Product	Yes
Suitable For Accent Lighting	No
Approval Marks	CE marking KEMA Keur certificate RoHS compliance
Energy Consumption kWh/1000 h	18 kWh

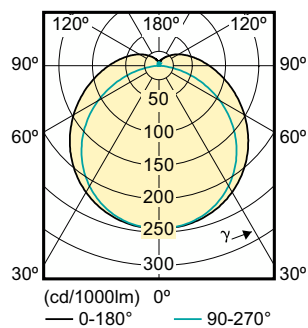
Product Data	
Order product name	MAS LEDtube 1200mm UO 18W 830 T8 RS
Full product name	MASTER LEDtube 1200mm UO 18W 830 T8 RS
Full product code	871869646149500
Order code	46149500
Material Nr. (12NC)	929001148802
Numerator - Quantity Per Pack	1
EAN/UPC - Product/Case	8718696461495
Numerator - Packs per outer box	10
EAN/UPC - Case	8718696461501

Dimensional drawing



Product	D1	D2	A1	A2	A3
MAS LEDtube 1200mm UO 18W 830 T8 RS	25.7 mm	28 mm	1,198 mm	1,205 mm	1,212 mm

Photometric data



Light Distribution Diagram - MAS LEDtube 1200mm UO 18W 830 T8 RS



Spectral Power Distribution Colour - MAS LEDtube 1200mm UO 18W 830 T8 RS

MASTER LEDtube EM/Mains T8

