



LED InstantFit Lamps

17T8/48-4000 IFG 10/1

Philips LED T8 InstantFit Lamps are an ideal energy saving choice for existing linear fluorescent fixtures.

Warnings and Safety

- Philips LED T8 InstantFit lamps will only operate properly on compatible instant-start ballasts. Please refer to the Philips LED T8 InstantFit Installation Guide, which can be obtained through your local Philips Sales Representative, or visit www.philips.com/tled

Product data

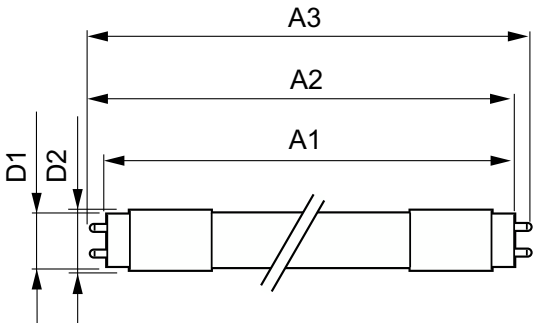
General Information		Lamp Current (Min)		145 mA
Cap-Base	G13 [Medium Bi-Pin Fluorescent]	Starting Time (Nom)		0.5 s
Nominal lifetime	36,000 hour(s)	Warm-up time to 60% light		Instant full light s
Switching Cycle	50,000	Power Factor (Fraction)		0.9
Lighting Technology	LED	Voltage (Nom)		120-277 V
EU RoHS compliant	Yes			
Light Technical		Temperature		
Color Code	840 [CCT of 4000K]	Ambient temperature range		-20 °C to 35 °C
Beam Angle (Nom)	240 degree(s)	T-Case Maximum (Nom)		60 °C
Luminous Flux	2,100 lm	Controls and Dimming		
Correlated Color Temperature (Nom)	4000 K	Dimmable		No
Color Consistency	<6			
Color rendering index (CRI)	82	Mechanical and Housing		
LLMF At End Of Nominal Lifetime (Nom)	70 %	Product Length		1,200 mm
Operating and Electrical		Approval and Application		
Line Frequency	50 to 60 Hz	Energy Saving Product		Yes
Input Frequency	50 to 60 Hz	Suitable For Accent Lighting		No
Power Consumption	17 W	Approval Marks		CE marking UL certificate RoHS compliance
Lamp Current (Max)	335 mA			KEMA Keur certificate

LED InstantFit Lamps

Energy Consumption kWh/1000 h	20 kWh
Product Data	
Order product name	17T8/48-4000 IFG 10/1
Full product name	17T8/48-4000 IFG 10/1
Order code	929001151104
Material Nr. (12NC)	929001151104

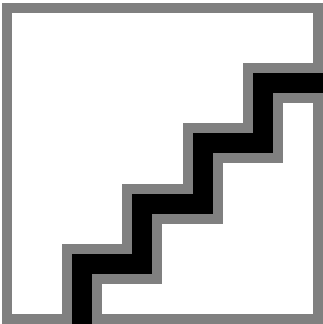
Numerator - Quantity Per Pack	1
EAN/UPC - Product/Case	046677456566
Numerator - Packs per outer box	10
EAN/UPC - Case	50046677456561

Dimensional drawing



Product	D1	D2	A1	A2	A3
17T8/48-4000 IFG 10/1	25.68 mm	28 mm	1,198.0 mm	1,205.0 mm	1,212.0 mm

Photometric data



Light Distribution Diagram - 17T8/48-4000 IFG 10/1

Spectral Power Distribution Colour - 17T8/48-4000 IFG 10/1

