



LED InstantFit Lamps

17T8/48-5000 IFG 10/1

Philips InstantFit LED Lamp, 4ft Glass (17W / 2100 lm / 5000K)

Philips LED T8 InstantFit Lamps are an ideal energy saving choice for existing linear fluorescent fixtures.

Warnings and Safety

- Perform a visual inspection to ensure lamp holders (or sockets) are not damaged or loose. If the lamp holders (or sockets) are damaged, corroded, charred, blackened or loose, contact a qualified electrician for proper replacement.
- Please refer to the ballast compatibility guide located at www.philips.com/instantfit.

Product data

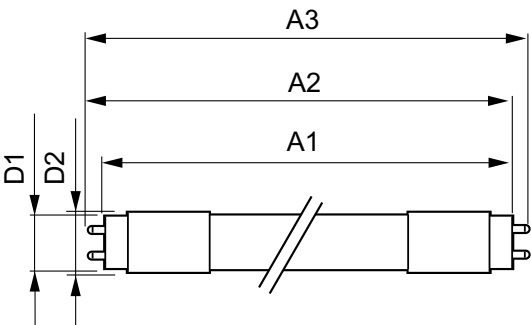
General Information		Power Consumption	
Cap-Base	G13 [Medium Bi-Pin Fluorescent]	Lamp Current (Max)	335 mA
Nominal lifetime	36,000 hour(s)	Lamp Current (Min)	145 mA
Switching Cycle	50,000	Starting Time (Nom)	0.5 s
Lighting Technology	LED	Warm-up time to 60% light	0.5 s
EU RoHS compliant	Yes	Power Factor (Fraction)	0.9
Light Technical		Voltage (Nom)	120-277 V
Color Code	850 [CCT of 5000K]	Temperature	
Luminous Flux	2,100 lm	Ambient temperature range	-4 °F to 113 °F
Correlated Color Temperature (Nom)	5000 K	T-Case Maximum (Nom)	140 °F
Color Consistency	<6	Controls and Dimming	
Color rendering index (CRI)	82	Dimmable	No
LLMF At End Of Nominal Lifetime (Nom)	70 %	Mechanical and Housing	
Operating and Electrical		Product Length	47-1/4 inch
Line Frequency	50 to 60 Hz		
Input Frequency	50 to 60 Hz		

LED InstantFit Lamps

Approval and Application	
Energy Saving Product	Yes
Approval Marks	UL certificate RoHS compliance
Product Data	
Order product name	17T8/48-5000 IFG 10/1
Full product name	17T8/48-5000 IFG 10/1
Order code	456574

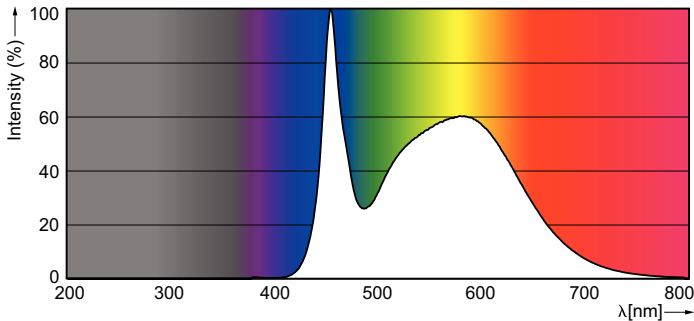
Material Nr. (12NC)	929001151204
Numerator - Quantity Per Pack	1
EAN/UPC - Product/Case	046677456573
Numerator - Packs per outer box	10
EAN/UPC - Case	50046677456578

Dimensional drawing



Product	D1	D2	A1	A2	A3
17T8/48-5000 IFG 10/1	25.7 mm	28 mm	1,198.0 mm	1,205.0 mm	1,212.0 mm

Photometric data



Light Distribution Diagram - 17T8/48-5000 IFG 10/1

Spectral Power Distribution Colour - 17T8/48-5000 IFG 10/1

