



MasterClass LEDtube InstantFit T8

14T8/48-3000 IF 10/1 DIM TAA/NAFTA

The Masterclass LED Type A - Ballast Driven (Plug and Play) InstantFit TLED is a great LED solution suitable for replacing T8 fluorescent lamps, using an existing ballast. Specific lamps can also be used on Philips Xitanium driver for Type C applications.

Product data

General Information		Starting Time (Nom)		0.5 s
Cap-Base	G13 [Medium Bi-Pin Fluorescent]	Warm Up Time to 60% Light (Nom)	0.5 s	
Main Application	Industrial	Power Factor (Nom)	0.9	
Nominal Lifetime (Nom)	50000 h	Voltage (Nom)	120-277, 347 V	
Switching Cycle	50000X	Temperature		
B50L70	50000 h	T-Ambient (Max)	45 °C	
Light Technical		T-Ambient (Min)	-20 °C	
Color Code	830 [CCT of 3000K]	T-Storage (Max)	65 °C	
Luminous Flux (Nom)	2000 lm	T-Storage (Min)	-40 °C	
Luminous Flux (Rated) (Nom)	2000 lm	T-Case Maximum (Nom)	45 °C	
Correlated Color Temperature (Nom)	3000 K	Controls and Dimming		
Color Consistency	<6	Dimmable	Yes	
Color Rendering Index (Nom)	82	Mechanical and Housing		
LLMF At End Of Nominal Lifetime (Nom)	70 %	Product Length	1200 mm	
Operating and Electrical		Approval and Application		
Input Frequency	50 to 60 Hz	Energy Saving Product	Yes	
Power (Rated) (Nom)	14 W			
Lamp Current (Nom)	180 mA			

MasterClass LEDtube InstantFit T8

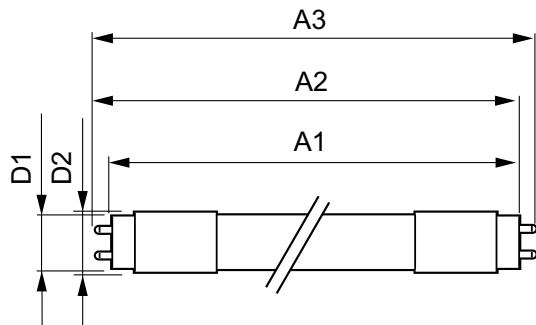
Approval Marks	UL certificate RoHS compliance DLC compliance
DesignLights Consortium Qualified Product List	DesignLights Consortium Qualified Product List

Product Data

Order product name	14T8/48-3000 IF 10/1 DIM TAA/NAFTA
EAN/UPC - Product	046677472641

Order code	929001158584
Numerator - Quantity Per Pack	1
Numerator - Packs per outer box	10
Material Nr. (12NC)	929001158584
Net Weight (Piece)	0.001 kg

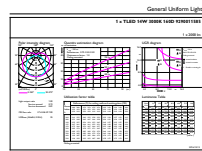
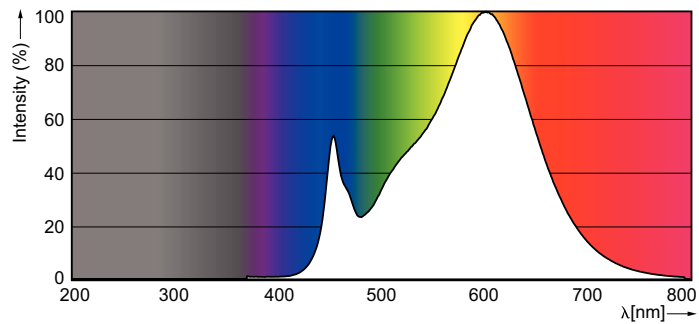
Dimensional drawing



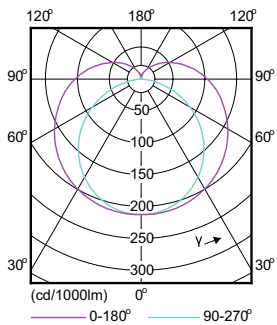
LEDtube 1200mm 15W/830

Product	D1	D2	A1	A2	A3
14T8/48-3000 IF 10/1 DIM TAA/NAFTA	25.7 mm	28 mm	1198.0 mm	1205.0 mm	1212.0 mm

Photometric data



LEDtube 1200mm 15W G13 T8 830 2000lm



MasterClass LEDtube InstantFit T8

Lifetime

