



MasterClass LEDtube InstantFit T8

14T8/48-4000 IF 10/1 DIM TAA/NAFTA

The Masterclass LED Type A - Ballast Driven (Plug and Play) InstantFit TLED is a great LED solution suitable for replacing T8 fluorescent lamps, using an existing ballast. Specific lamps can also be used on Philips Xitanium driver for Type C applications.

Product data

General Information	
Cap-Base	G13 [Medium Bi-Pin Fluorescent]
Main Application	Industrial
Nominal Lifetime (Nom)	50000 h
Switching Cycle	50000X
B50L70	50000 h
Light Technical	
Color Code	840 [CCT of 4000K]
Luminous Flux (Nom)	2100 lm
Luminous Flux (Rated) (Nom)	2100 lm
Correlated Color Temperature (Nom)	4000 K
Color Consistency	<6
Color Rendering Index (Nom)	82
LLMF At End Of Nominal Lifetime (Nom)	70 %
Operating and Electrical	
Input Frequency	50 to 60 Hz
Power (Rated) (Nom)	14 W
Lamp Current (Nom)	180 mA

Starting Time (Nom)	0.5 s
Warm Up Time to 60% Light (Nom)	0.5 s
Power Factor (Nom)	0.9
Voltage (Nom)	120-277, 347 V
Temperature	
T-Ambient (Max)	45 °C
T-Ambient (Min)	-20 °C
T-Storage (Max)	65 °C
T-Storage (Min)	-40 °C
T-Case Maximum (Nom)	45 °C
Controls and Dimming	
Dimmable	Yes
Mechanical and Housing	
Product Length	1200 mm
Approval and Application	
Energy Efficiency Label (EEL)	Not applicable

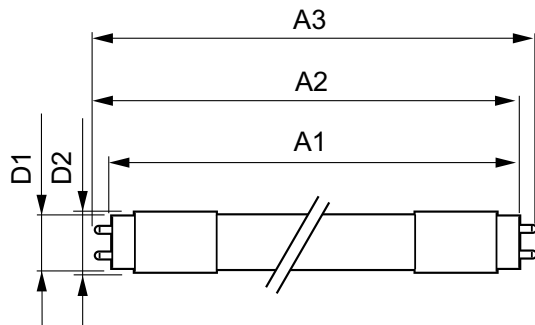
MasterClass LEDtube InstantFit T8

Energy Saving Product	Yes
Approval Marks	UL certificate RoHS compliance DLC compliance
DesignLights Consortium Qualified Product List	DesignLights Consortium Qualified Product List

Product Data	
Order product name	14T8/48-4000 IF 10/1 DIM TAA/NAFTA

EAN/UPC - Product	046677472665
Order code	929001158784
Numerator - Quantity Per Pack	1
Numerator - Packs per outer box	10
Material Nr. (12NC)	929001158784
Net Weight (Piece)	0.001 kg

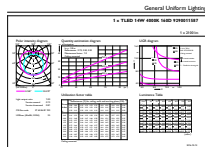
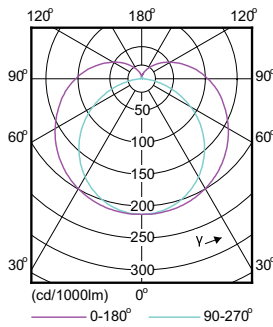
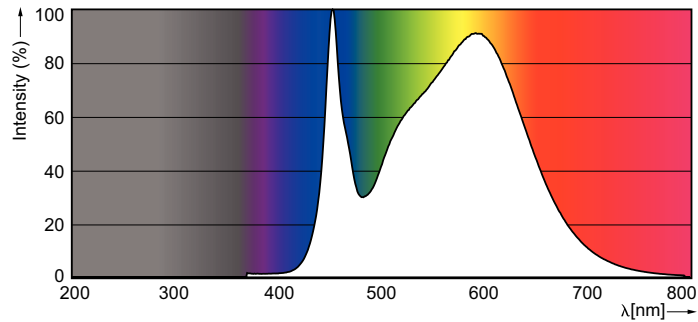
Dimensional drawing



LEDtube 1200mm 15W/840

Product	D1	D2	A1	A2	A3
14T8/48-4000 IF 10/1 DIM TAA/NAFTA	25.7 mm	28 mm	1198.0 mm	1205.0 mm	1212.0 mm

Photometric data



LEDtube 1200mm 15W G13 T8 840 2100lm

MasterClass LEDtube InstantFit T8

Lifetime

