



T8

14T8/48-5000 IF 10/1 DIM TAA/NAFTA

Our TLEDs are available in InstantFit (Type A / Type C) or MainsFit (Ballast bypass / Type B) versions. The InstantFit lamps work on a broad variety of ballasts and LED drivers. Only InstantFit has over 15,000 lamp & ballast combinations delivering even light output, energy savings and a long lifetime. Our MainsFit products feature a double-ended design, simplifying installation while a proprietary safety circuit minimizes a shock risk. Lamp sizes range from 2-foot to 8-foot and U-bend with a variety of lumen outputs.

Product data

General information	
Base	G13 [Medium Bi-Pin Fluorescent]
EU RoHS compliant	Yes
Nominal Lifetime (Nom)	50000 h
Switching Cycle	50000X
Light technical	
Color Code	850 [CCT of 5000K]
Beam Angle (Nom)	180 °
Initial lumen (Nom)	2100 lm
Color Designation	Daylight
Correlated Color Temperature (Nom)	5000 K
Luminous Efficacy (rated) (Nom)	150.00 lm/W
Color Consistency	<6
Color Rendering Index (Nom)	82
LLMF At End Of Nominal Lifetime (Nom)	70 %
Operating and electrical	
Input Frequency	50 to 60 Hz
Power (Rated) (Nom)	14 W

Wattage Equivalent	32 W
Starting Time (Nom)	0.5 s
Warm Up Time to 60% Light (Nom)	0.5 s
UL Type	Type A - works on ballast
Power Factor (Nom)	0.9
Voltage (Nom)	120-277, 347 V
Temperature	
T-Ambient (Max)	45 °C
T-Ambient (Min)	-20 °C
T-Storage (Max)	65 °C
T-Storage (Min)	-40 °C
T-Case Maximum (Nom)	45 °C
Controls and dimming	
Dimmable	Yes
Mechanical and housing	
Bulb Finish	Frosted
Bulb Material	Plastic

T8

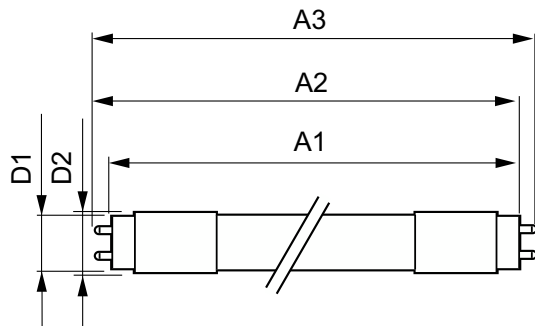
Product Length	48 in
Bulb Shape	Tube, double-ended
Approval and application	
Energy Saving Product	Yes
Approbation Marks	UL certificate RoHS compliance DLC compliance
Energy Consumption kWh/1000 h	- kWh
Energy Certifications	DLC Standard

Product data

Order product name	14T8/48-5000 IF 10/1 DIM TAA/NAFTA
--------------------	------------------------------------

EAN/UPC - Product	046677472672
Order code	469635
Numerator - Quantity Per Pack	1
Numerator - Packs per outer box	10
Material Nr. (12NC)	929001158884
Net Weight (Piece)	0.001 kg
Model Number	9290011588C

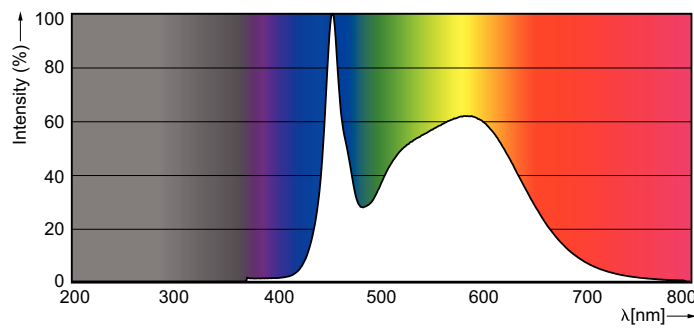
Dimensional drawing



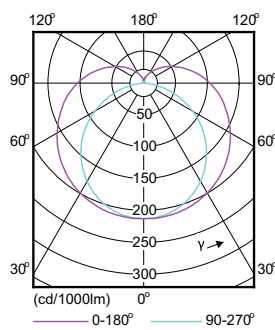
14T8/48-5000 IF 10/1 DIM TAA/NAFTA

Product	D1	D2	A1	A2	A3
14T8/48-5000 IF 10/1 DIM TAA/NAFTA	25.7 mm	28 mm	1198.0 mm	1205.0 mm	1212.0 mm

Photometric data



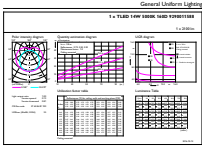
LEDtube 1200mm 15W G13 T8 850 2100lm



LEDtube 1200mm 15W G13 T8 850 2100lm

T8

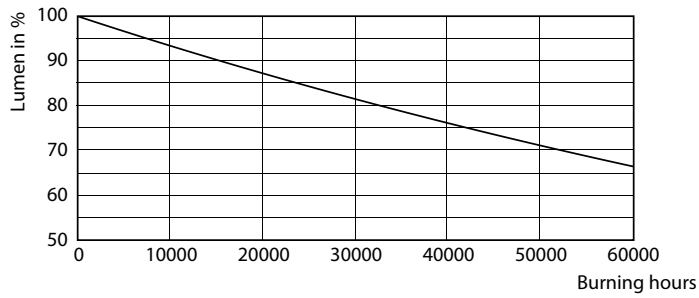
Photometric data



General Parameters 41 Philips Lighting B.V. Page 17

LEDtube 1200mm 15W G13 T8 850 2100lm

Lifetime



LEDtube HF 1500mm 26W G5 T5

LEDtube 1200mm 14-32W G13

