



# Standard LED bulbs

## LEDBulb 10.5-85W E27 865 220-240V 1PF/10

Standard LED bulbs are compatible with existing fixtures with a E27 holder and are designed for retrofit replacement of incandescent, halogen and energy saving bulbs. They deliver huge energy savings and minimize maintenance costs. The Standard LED bulb is the perfect bulb for your basic lighting needs. It provides the beautiful light and performance you expect from the LED technology at an affordable price.

### Product data

<b>General Information</b>		<b>Lamp Current (Nom)</b>		95 mA
Cap-Base	E27 [E27]	<b>Wattage Equivalent</b>		85 W
Nominal lifetime	15,000 hour(s)	<b>Starting Time (Nom)</b>		0.5 s
Switching Cycle	50,000	<b>Warm-up time to 60% light</b>		0.5 s
Lighting Technology	LED	<b>Power Factor (Fraction)</b>		0.5
EU RoHS compliant	Yes	<b>Voltage (Nom)</b>		220-240 V
<b>Light Technical</b>		<b>Temperature</b>		
Color Code	865 [CCT of 6500K]	<b>T-Case Maximum (Nom)</b>		85 °C
Beam Angle (Nom)	150 degree(s)	<b>Controls and Dimming</b>		
Luminous Flux	1,055 lm	<b>Dimmable</b>		No
Color Designation	Cool Daylight	<b>Mechanical and Housing</b>		
Correlated Color Temperature (Nom)	6500 K	<b>Bulb Finish</b>		Frosted
Luminous Efficacy (rated) (Nom)	100.48 lm/W	<b>Bulb Shape</b>		A60 [A 60mm]
Color Consistency	<6	<b>Product Data</b>		
Color rendering index (CRI)	80	<b>Order product name</b>		LEDBulb 10.5-85W E27 865 220-240V 1PF/10
LLMF At End Of Nominal Lifetime (Nom)	70 %	<b>Full product name</b>		LEDBulb 10.5-85W E27 865 220-240V 1PF/10
<b>Operating and Electrical</b>		<b>Full product code</b>		871869675356900
Line Frequency	50 to 60 Hz	<b>Order code</b>		929001163890
Input Frequency	50 to 60 Hz			
Power Consumption	10.5 W			

Standard LED bulbs

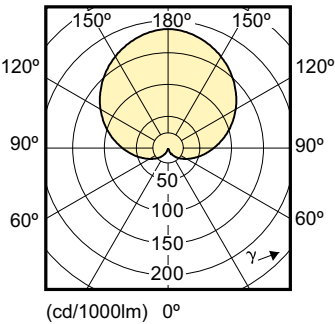
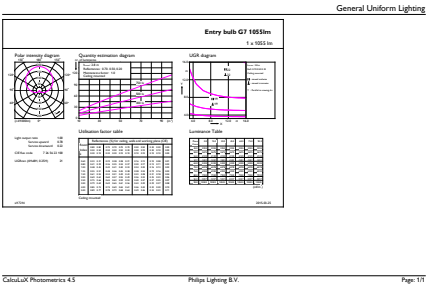
Material Nr. (12NC)	929001163890
Numerator - Quantity Per Pack	1
EAN/UPC - Product/Case	8718696753569
Numerator - Packs per outer box	10

EAN/UPC - Case	8718696753576
----------------	---------------

Dimensional drawing

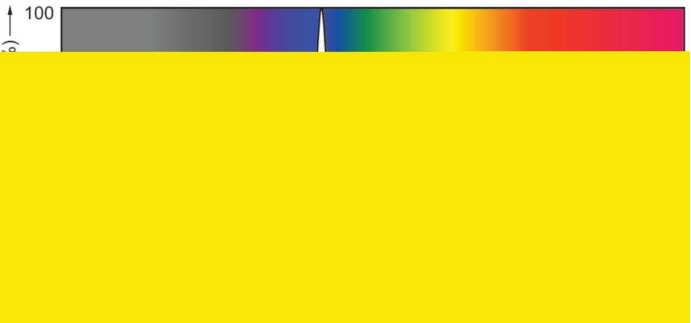
Product	D	C
LEDBulb 10.5-85W E27 865 220-240V 1PF/10	60 mm	110 mm

Photometric data



General uniform lighting - LEDBulb 10.5-85W E27 865 220-240V 1PF/10

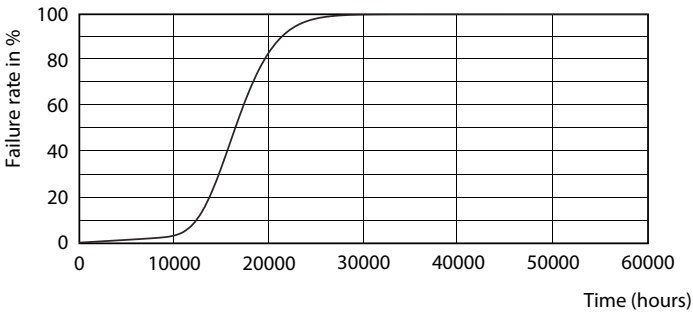
Light Distribution Diagram - LEDBulb 10.5-85W E27 865 220-240V 1PF/10



Spectral Power Distribution Colour - LEDBulb 10.5-85W E27 865 220-240V 1PF/10

Standard LED bulbs

Lifetime



Life Expectancy Diagram - LEDBulb 10.5-85W E27 865 220-240V 1PF/10

Lumen Maintenance Diagram - LEDBulb 10.5-85W E27 865 220-240V 1PF/10

