



# MASTER LEDspot LV AR111

## MAS LEDspotLV D 15-75W 930 AR111 40D

Delivering a warm, halogen-like accent beam, MASTER LEDspot LV AR111 is an ideal retrofit solution for spot and general lighting applications in the hospitality and retail industry. It is particularly suitable for general lighting where the light is on all the time, such as creative accent lighting applications in shops, restaurants, hotels, and especially for galleries, exhibitions and museums. The robustly designed MASTER LEDspot LV AR111 offers various beam angles for a clearly defined beam spread. There is no UV or IR in the beam, making it suitable for illuminating heat-sensitive objects (food, organic materials, paintings, etc.). The patented intelligent driver enables broad compatibility with existing electromagnetic and electronic halogen transformers. MASTER LEDspot LV AR111 delivers huge energy savings and minimizes maintenance cost without any reduction in brightness.

### Product data

| General Information     |            |
|-------------------------|------------|
| Cap base                | G53 [ G53] |
| EU RoHS compliant       | Yes        |
| Nominal lifetime (nom.) | 40000 h    |
| Switching cycle         | 50,000X    |
| Technical type          | 15-75W     |

| Light Technical                     |                       |
|-------------------------------------|-----------------------|
| Colour Code                         | 930 [ CCT of 3,000 K] |
| Beam Angle (Nom)                    | 40 °                  |
| Luminous flux (nom.)                | 840 lm                |
| Luminous intensity (nom.)           | 1450 cd               |
| Colour designation                  | White (WH)            |
| Correlated Colour Temperature (Nom) | 3000 K                |

|  |            |
|--|------------|
| Luminous efficacy (rated) (nom.)       | 56.00 lm/W |
| Colour consistency                     | <6         |
| Colour rendering index (nom.)          | 90         |
| LLMF at end of nominal lifetime (nom.) | 70 %       |
| Luminous flux in 90° cone (rated)      | 760 lm     |

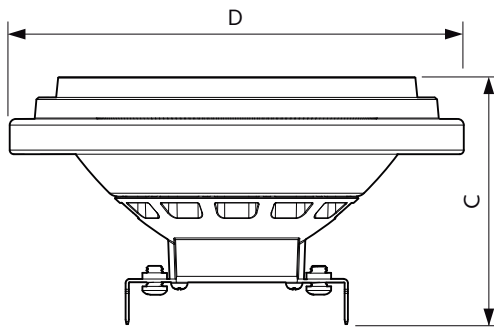
| Operating and Electrical         |                    |
|----------------------------------|--------------------|
| Input frequency                  | - Hz               |
| Power (Rated) (Nom)              | 15 W               |
| Lamp current (nom.)              | 1800 mA            |
| Wattage equivalent               | 75 W               |
| Starting time (nom.)             | 0.5 s              |
| Warm-up time to 60% light (nom.) | instant full light |
| Power factor (nom.)              | 0.7                |

# MASTER LEDspot LV AR111

|                                 |       |
|---------------------------------|-------|
| Voltage (Nom)                   | 12 V  |
| <b>Temperature</b>              |       |
| T-Case maximum (nom.)           | 74 °C |
| <b>Controls and Dimming</b>     |       |
| Dimmable                        | Yes   |
| <b>Mechanical and Housing</b>   |       |
| Bulb shape                      | AR111 |
| <b>Approval and Application</b> |       |
| Suitable for accent lighting    | Yes   |

|                                    |                                      |
|------------------------------------|--------------------------------------|
| Energy consumption kWh/1,000 hours | 17 kWh                               |
| <b>Product Data</b>                |                                      |
| Full product code                  | 871869651522800                      |
| Order product name                 | MAS LEDspotLV D 15-75W 930 AR111 40D |
| EAN/UPC – product                  | 8718696515228                        |
| Order code                         | 51522800                             |
| SAP numerator – quantity per pack  | 1                                    |
| Numerator – packs per outer box    | 6                                    |
| SAP material                       | 929001170508                         |
| SAP net weight (piece)             | 0.360 kg                             |

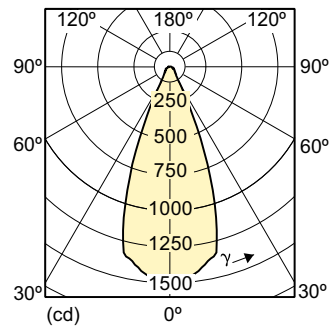
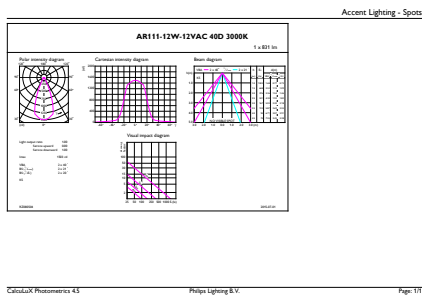
## Dimensional drawing



MAS LEDspotLV D 15-75W 930 AR111 40D

| Product                              | D      | C     |
|--------------------------------------|--------|-------|
| MAS LEDspotLV D 15-75W 930 AR111 40D | 111 mm | 62 mm |

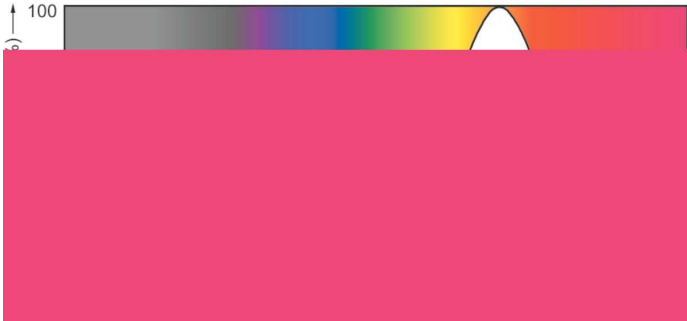
## Photometric data



MASTER LEDspot LV AR111 75W G53 930 40D

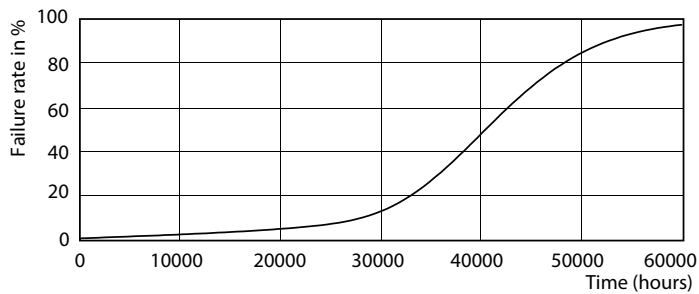
# MASTER LEDspot LV AR111

## Photometric data

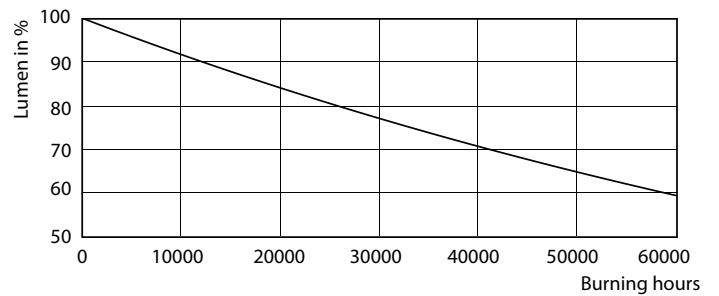


SDPO\_LEDspotL\_0028-Spectral Power distribution

## Lifetime



MASTER LEDspotLV AR111 75W G53 940 40D



MASTER LEDspotLV AR111 75W G53 940 40D

