



CorePro LED PLC 4P

CorePro LED PLC 6.5W 830 4P G24q-2

The CorePro LED PLC 4P integrates a LED light source into a traditional fluorescent form factor. This product is the ideal solution for uplamping in general lighting applications: it meets basic lighting requirements, offers significant energy savings, and is environmentally friendly.

Product data

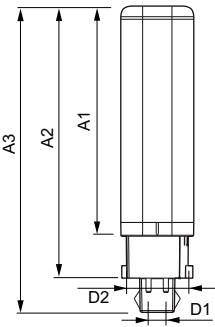
General Information		Input Frequency	
Cap-Base	G24q-2	Power Consumption	30000-80000 Hz
Nominal lifetime	30,000 hour(s)	Lamp Current (Max)	6.5 W
Switching Cycle	50,000	Lamp Current (Min)	300 mA
Lighting Technology	LED	Starting Time (Nom)	150 mA
Flux measurement reference	Sphere	Warm-up time to 60% light	0.5 s
CE mark	Yes	Power Factor (Fraction)	0.9
EU RoHS compliant	Yes	Voltage (Nom)	20-50 V
Light Technical		LED alternative to fluorescent lamp power	18 W
Color Code	830 [CCT of 3000K]	Inrush current at mains	-
Beam Angle (Nom)	120 degree(s)	Max. lamp no. on MCB B type 10A - Mains	-
Luminous Flux	650 lm	Max. lamp no. on MCB B type 10A – EM ballast without Comp. Cap.	-
Color Designation	White (WH)	Max. lamp no. on MCB B type 10A – EM ballast with Comp. Cap.	-
Correlated Color Temperature (Nom)	3000 K	Max. lamp no. on MCB B type 16A - Mains	-
Luminous Efficacy (rated) (Nom)	92.31 lm/W	Max. lamp no. on MCB B type 16A – EM ballast without Comp. Cap.	-
Color Consistency	<6	Max. lamp no. on MCB B type 16A – EM ballast with Comp. Cap.	-
Color rendering index (CRI)	83	Ballast Compatibility	HF
LLMF At End Of Nominal Lifetime (Nom)	70 %		
Photobiological safety according to EN 62471	RG0		
Operating and Electrical			
Line Frequency	30000-80000 Hz		

CorePro LED PLC 4P

Temperature	
Ambient temperature range	-20 °C to 35 °C
T-Case Maximum (Nom)	66 °C
Controls and Dimming	
Dimmable	No
Mechanical and Housing	
Bulb Material	Plastic
Product Length	100 mm
Bulb Shape	PL-C
Approval and Application	
Energy Efficiency Class	F
Energy Saving Product	Yes
Approval Marks	TUV CE marking RoHS compliance KEMA Keur certificate

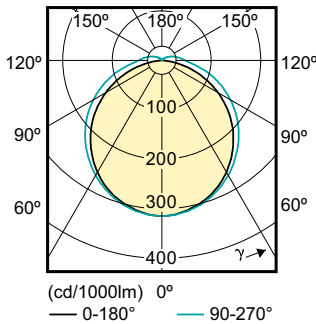
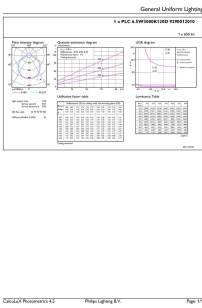
Energy Consumption kWh/1000 h	7 kWh
EPREL Registration Number	403552
Product Data	
Order product name	CorePro LED PLC 6.5W 830 4P G24q-2
Full product name	CorePro LED PLC 6.5W 830 4P G24q-2
Full product code	871869654119700
Order code	54119700
Material Nr. (12NC)	929001201002
Numerator - Quantity Per Pack	1
EAN/UPC - Product/Case	8718696541197
Numerator - Packs per outer box	10
EAN/UPC - Case	8718696541203

Dimensional drawing



Product	D1	D2	A1	A2	A3
CorePro LED PLC 6.5W 830 4P G24q-2	24.3 mm	28.4 mm	105.8 mm	125 mm	140.6 mm

Photometric data

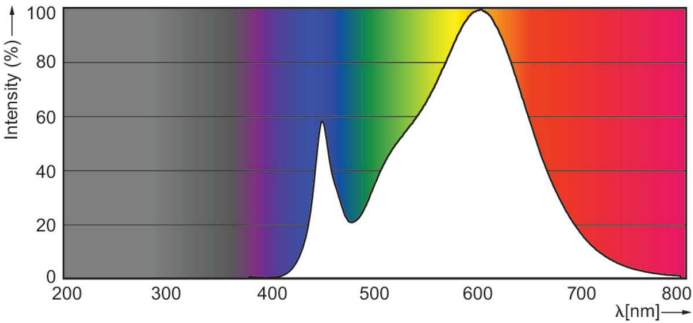


General uniform lighting - CorePro LED PLC 6.5W 830 4P G24q-2

Light Distribution Diagram - CorePro LED PLC 6.5W 830 4P G24q-2

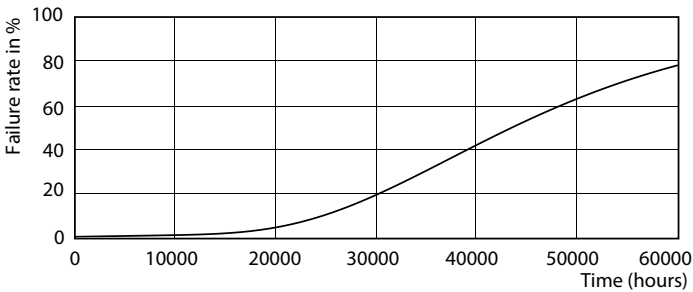
CorePro LED PLC 4P

Photometric data

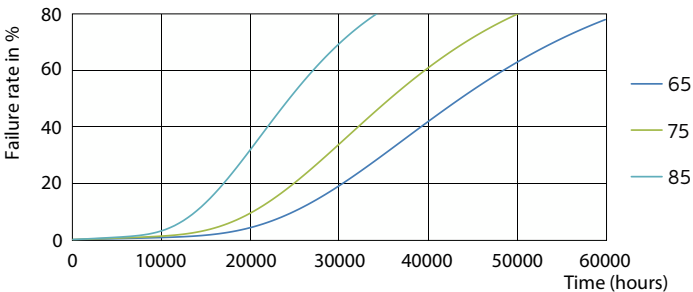


Spectral Power Distribution Colour - CorePro LED PLC 6.5W 830 4P G24q-2

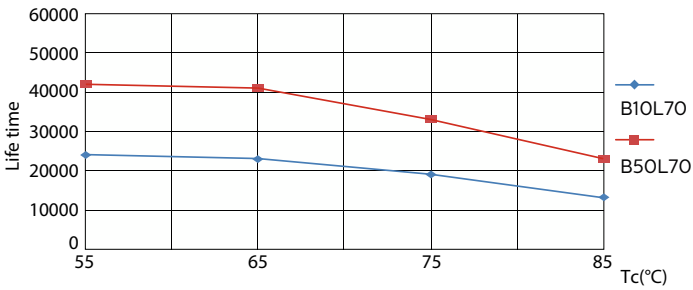
Lifetime



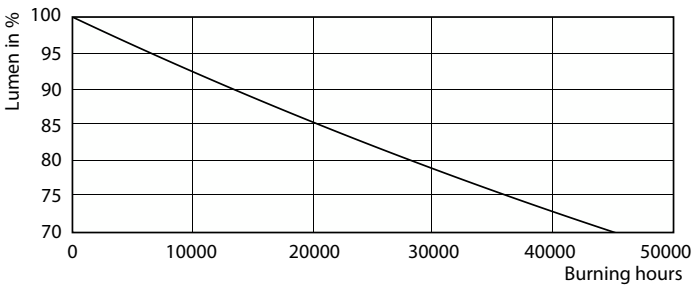
Life Expectancy Diagram - CorePro LED PLC 6.5W 830 4P G24q-2



Life Expectancy Diagram - CorePro LED PLC 6.5W 830 4P G24q-2



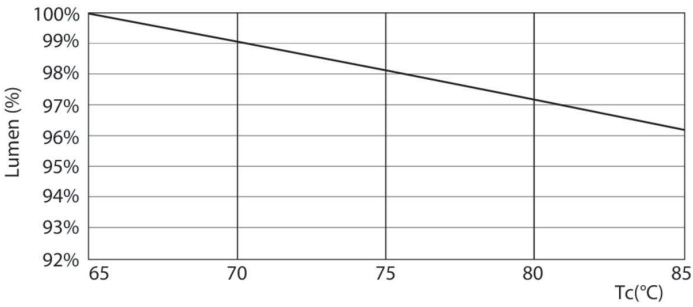
Life Expectancy Diagram - CorePro LED PLC 6.5W 830 4P G24q-2



Lumen Maintenance Diagram - CorePro LED PLC 6.5W 830 4P G24q-2

CorePro LED PLC 4P

Lifetime



Lumen Maintenance Diagram - CorePro LED PLC 6.5W 830 4P G24q-2

