



CorePro LED PLC 2P



CorePro LED PLC 6.5W 840 2P G24d-2

The CorePro LED PLC 2P integrates a LED light source into a traditional fluorescent form factor. This product is the ideal solution for uplamping in general lighting applications: it meets basic lighting requirements, offers significant energy savings and is environmentally friendly.

Product data

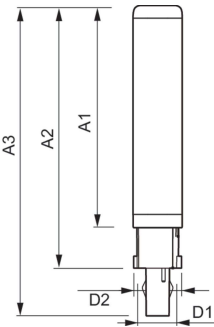
General Information		Input frequency	
Cap base	G24d-2	Power Consumption	50 to 60 Hz
Nominal lifetime	30,000 h	Lamp current (max.)	6.5 W
Switching Cycle	50,000	Lamp current (min.)	35 mA
Lighting Technology	LED	Starting time (nom.)	25 mA
Flux measurement reference	Sphere	Warm-up time to 60% light	0.5 s
CE mark	Yes	Power Factor (Fraction)	0.9
EU RoHS compliant	Yes	Voltage (nom.)	220-240 V
Light Technical		LED alternative to fluorescent lamp power	18 W
Colour Code	840 [CCT of 4000K]	Inrush current at mains	3.4
Beam angle (nom.)	120 degree(s)	Max. lamp no. on MCB B type 10A — Mains	123
Luminous Flux	700 lm	Max. lamp no. on MCB B type 10A — EM ballast without Comp. Cap.	150
Colour designation	Cool White (CW)	Max. lamp no. on MCB B type 10A — EM ballast with Comp. Cap.	30
Correlated Colour Temperature	4000 K	Max. lamp no. on MCB B type 16A — Mains	197
Luminous efficacy (rated) (nom.)	92.31 lm/W	Max. lamp no. on MCB B type 16A — EM ballast without Comp. Cap.	220
Colour consistency	<6	Max. lamp no. on MCB B type 16A — EM ballast with Comp. Cap.	49
Colour rendering index (CRI)	83	Ballast Compatibility	EM
LLMF at end of nominal lifetime (nom.)	70 %		
Photobiological safety according to EN 62471	RG0		
Operating and Electrical			
Line Frequency	50 to 60 Hz		

CorePro LED PLC 2P

Temperature	
Ambient temperature range	-20°C to 35°C
T-Case maximum (nom.)	65 °C
Controls and Dimming	
Dimmable	No
Mechanical and Housing	
Bulb material	Plastic
Product length	100 mm
Bulb shape	PL-C
Approval and Application	
Energy Efficiency Class	F
Energy-saving product	Yes
Approval marks	TUV CE marking RoHS compliance KEMA Keur certificate

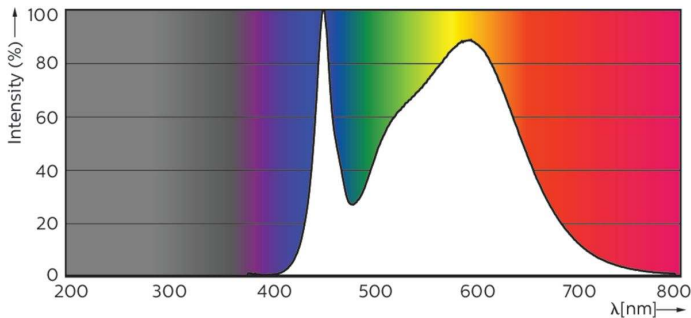
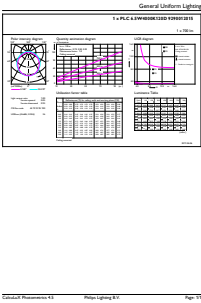
Energy consumption kWh/1,000 hours	7 kWh
EPREL registration number	403557
Product Data	
Order product name	CorePro LED PLC 6.5W 840 2P G24d-2
Full product name	CorePro LED PLC 6.5W 840 2P G24d-2
Full EOC	871869654129600
Order code	54129600
Material no. (12 NC)	929001201502
SAP numerator – quantity per pack	1
EAN/UPC – Product/Case	8718696541296
Numerator – packs per outer box	10
EAN/UPC - Case	8718696541302

Dimensional drawing



Product	D1	D2	A1	A2	A3
CorePro LED PLC 6.5W 840 2P G24d-2	24.3 mm	28.4 mm	105.8 mm	125 mm	147.6 mm

Photometric data

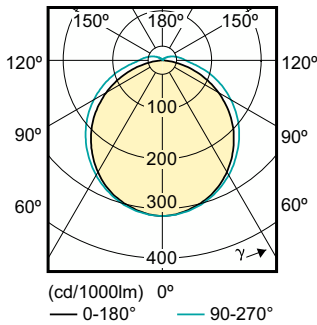


General uniform lighting - CorePro LED PLC 6.5W 840 2P G24d-2

Spectral Power Distribution Colour - CorePro LED PLC 6.5W 840 2P G24d-2

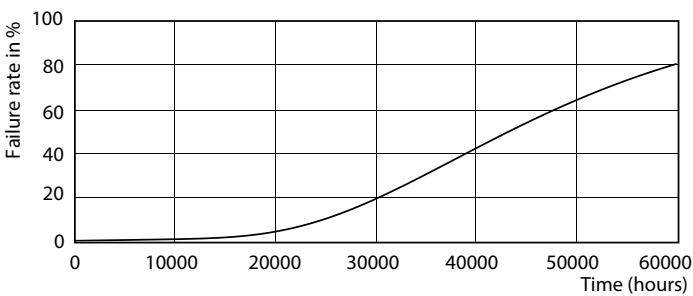
CorePro LED PLC 2P

Photometric data

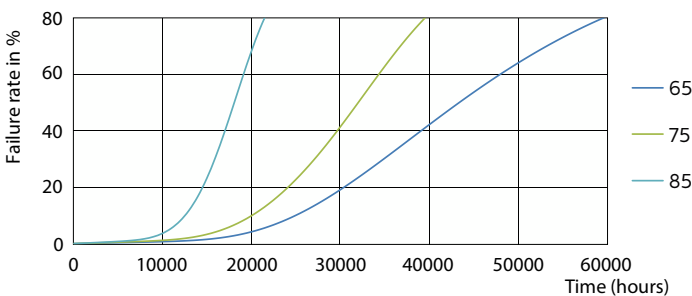


Light Distribution Diagram - CorePro LED PLC 6.5W 840 2P G24d-2

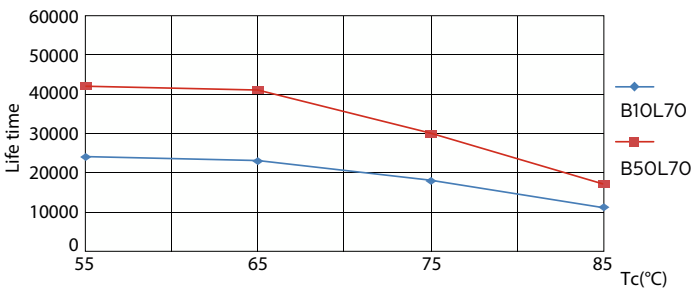
Lifetime



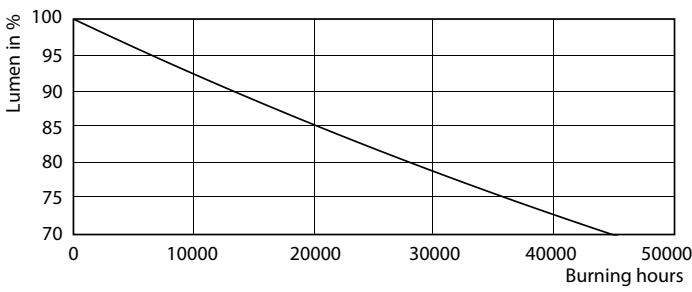
Life Expectancy Diagram - CorePro LED PLC 6.5W 840 2P G24d-2



Life Expectancy Diagram - CorePro LED PLC 6.5W 840 2P G24d-2



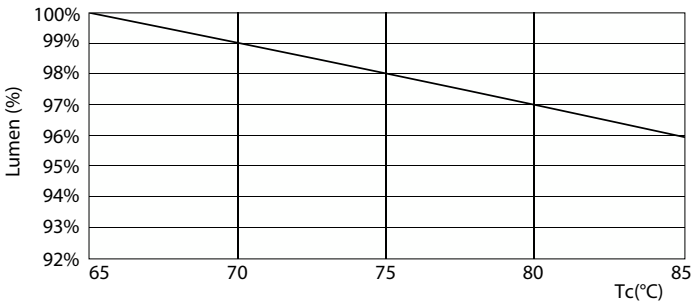
Life Expectancy Diagram - CorePro LED PLC 6.5W 840 2P G24d-2



Lumen Maintenance Diagram - CorePro LED PLC 6.5W 840 2P G24d-2

CorePro LED PLC 2P

Lifetime



Lumen Maintenance Diagram - CorePro LED PLC 6.5W 840 2P G24d-2

