



# MASTER LEDtube InstantFit HF T8

## MASTER LEDtube HF 1200mm HO 18W840 T8 CLEAR

Philips MASTER LEDtube InstantFit T8 integrates a LED light source into a traditional fluorescent form factor. Its unique design creates a perfectly uniform visual appearance which cannot be distinguished from traditional fluorescent. Philips MASTER LEDtube InstantFit T8 is the ideal solution for customers who have higher light requirements and want to maximize value over lifetime.; Full energy savings & longer lifetime result in attractive payback times and TCO benefits.

### Product data

General Information	
Cap-Base	G13 [ Medium Bi-Pin Fluorescent]
Main Application	Industrial
Nominal Lifetime (Nom)	50000 h
Switching Cycle	50000X
B50L70	50000 h
Light Technical	
Color Code	840 [ CCT of 4000K]
Beam Angle (Nom)	120 °
Luminous Flux (Nom)	2100 lm
Luminous Flux (Rated) (Nom)	2100 lm
Rated Beam Angle	120 °
Correlated Color Temperature (Nom)	4000 K
Color Consistency	<6
Color Rendering Index (Nom)	83

LLMF At End Of Nominal Lifetime (Nom) 70 %	
Operating and Electrical	
Input Frequency	25000-80000 Hz
Power (Rated) (Nom)	18 W
Lamp Current (Nom)	300 mA
Starting Time (Nom)	0.5 s
Warm Up Time to 60% Light (Nom)	instant full light s
Power Factor (Nom)	0.9
Voltage (Nom)	50-100 V
Temperature	
T-Ambient (Max)	35 °C
T-Ambient (Min)	-20 °C
T-Storage (Max)	65 °C
T-Storage (Min)	-40 °C

# MASTER LEDtube InstantFit HF T8

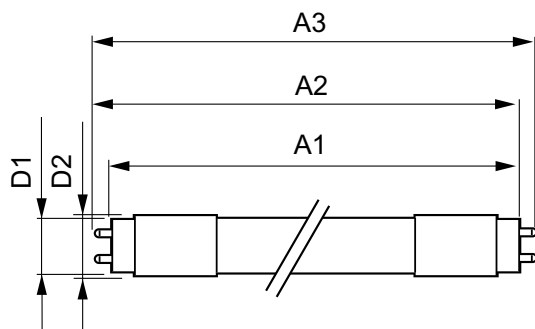
T-Case Maximum (Nom)	40 °C
<b>Controls and Dimming</b>	
Dimmable	No
<b>Mechanical and Housing</b>	
Product Length	1200 mm
<b>Approval and Application</b>	
Energy Efficiency Label (EEL)	A+
Energy Saving Product	Yes
Suitable For Accent Lighting	No
Approval Marks	CE marking RoHS compliance KEMA Keur certificate

Energy Consumption kWh/1000 h	22 kWh
<b>Product Data</b>	
Full product code	871869654907000
Order product name	MASTER LEDtube HF 1200mm HO 18W840 T8 CLEAR
EAN/UPC - Product	8718696549070
Order code	929001206902
Numerator - Quantity Per Pack	1
Numerator - Packs per outer box	10
Material Nr. (12NC)	929001206902
Net Weight (Piece)	0.360 kg

## Warnings and Safety

- NOTES: The overall energy efficiency and light distribution of any installation that uses these lamps are determined by the design of the installation.

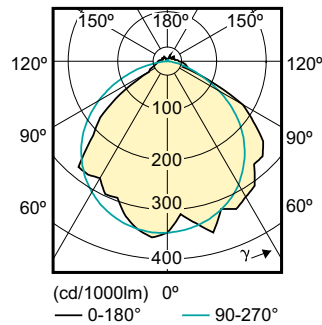
## Dimensional drawing



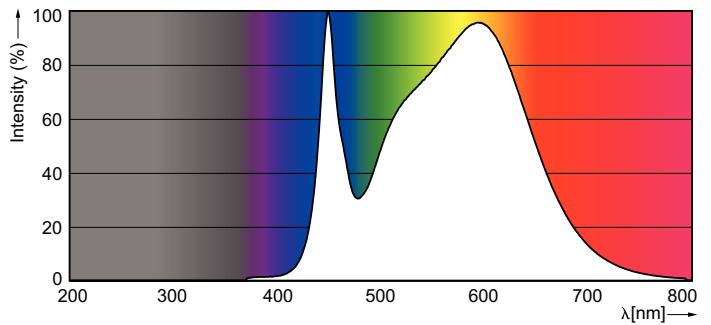
LEDtube HF 1200mm HO 18W840 T8 CLEAR

Product	D1	D2	A1	A2	A3
MASTER LEDtube HF 1200mm HO 18W840 T8 CLEAR	25.68 mm	28 mm	1198.0 mm	1205.0 mm	1212.0 mm

## Photometric data



LEDtube 1200mm HO 18 W /840 T8 CL



LEDtube 1200mm HO 18 W /840 T8 CL

## MASTER LEDtube InstantFit HF T8

