



CorePro LEDtube EM/ Mains T8

CorePro LEDtube 1500mm 20W 865 C G

Philips CorePro LEDtubes are the quick and easy way to replace T8 fluorescent or other LED tubes with a fast pay back time. Not only does the Core range of LEDtubes require a low initial investment, but LED energy efficiency also delivers instant savings that you can bank on over a long and reliable lifetime. Plus, with the same lamp size and light distribution as fluorescent alternatives, you'll never know the difference. There are two ways to install these LED tubes: Rewire your existing fluorescent-based luminaires so the CorePro LEDtubes work directly on the Mains. Or simply change the fluorescent starter to an LED starter that can be used with your Electromagnetic ballasts.

Warnings and Safety

- NOTE: The overall energy efficiency and light distribution of any installation that uses these lamps will be determined by the design of the installation.
- Installation must be done according to the installation diagrams provided with the lamp or available online. Installation must be done by a certified professional.

Product data

General Information		Luminous Flux	
Cap-Base	G13 [Medium Bi-Pin Fluorescent]	2,000 lm	
Nominal lifetime	30,000 hour(s)	Correlated Color Temperature (Nom) 6500 K	
Switching Cycle	200,000	Color Consistency <6	
Lighting Technology	LED	Color rendering index (CRI) 80	
EU RoHS compliant	Yes	LLMF At End Of Nominal Lifetime (Nom) 70 %	
Light Technical		Operating and Electrical	
Color Code	865 [CCT of 6500K]	Line Frequency 50 to 60 Hz	
Beam Angle (Nom)	240 degree(s)	Input Frequency 50 to 60 Hz	
		Power Consumption 20 W	

CorePro LEDtube EM/Mains T8

Lamp Current (Max)	92 mA
Lamp Current (Min)	81 mA
Starting Time (Nom)	0.5 s
Warm-up time to 60% light	Instant full light s
Power Factor (Fraction)	0.9
Voltage (Nom)	220-240 V

Temperature

Ambient temperature range	-20 °C to 45 °C
T-Case Maximum (Nom)	65 °C

Controls and Dimming

Dimmable	No
----------	----

Mechanical and Housing

Product Length	1,500 mm
----------------	----------

Approval and Application

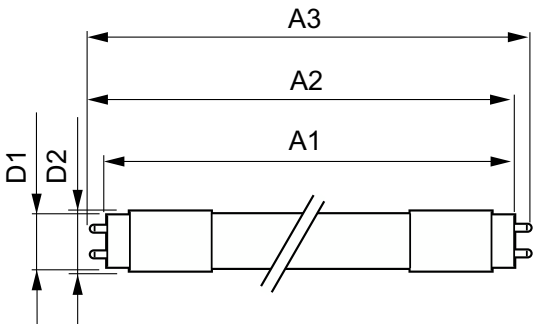
Energy Saving Product	Yes
-----------------------	-----

Suitable For Accent Lighting	No
Approval Marks	CE marking RoHS compliance KEMA Keur certificate
Energy Consumption kWh/1000 h	20 kWh

Product Data

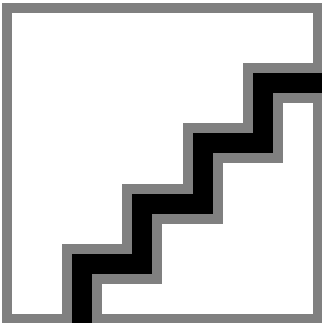
Order product name	CorePro LEDtube 1500mm 20W 865 C G
Full product name	CorePro LEDtube 1500mm 20W 865 C G
Full product code	871869656610700
Order code	929001221502
Material Nr. (12NC)	929001221502
Numerator - Quantity Per Pack	1
EAN/UPC - Product/Case	8718696566107
Numerator - Packs per outer box	10
EAN/UPC - Case	8718696566114

Dimensional drawing

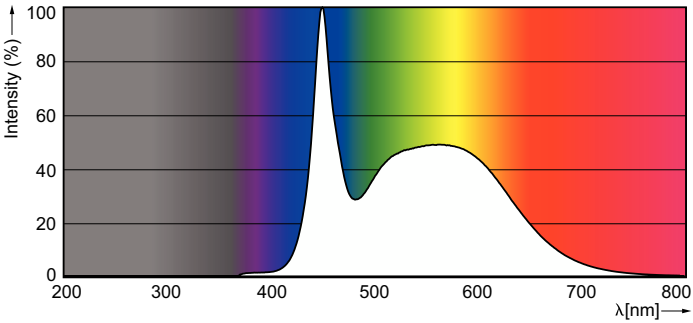


Product	D1	D2	A1	A2	A3
CorePro LEDtube 1500mm 20W 865 C G	25.7 mm	28 mm	1,500 mm	1,507.1 mm	1,514.2 mm

Photometric data



General uniform lighting - CorePro LEDtube 1500mm 20W 865 C G



Spectral Power Distribution Colour - CorePro LEDtube 1500mm 20W 865 C G

CorePro LEDtube EM/Mains T8

Photometric data



Light Distribution Diagram - CorePro LEDtube 1500mm 20W 865 C G

