



MASTER LEDtube EM/ Mains T8

MAS LEDtube 1200mm UO 18W 830 T8 RN

The Philips MASTER LEDtube integrates a LED light source into a traditional fluorescent form factor. Its unique design creates a perfectly uniform visual appearance which cannot be distinguished from traditional fluorescent. For those that are looking for value for money within limited budget and re-lamping efforts for better light effect and lifetime.

Product data

General Information		Operating and Electrical	
Cap-Base	G13 [Medium Bi-Pin Fluorescent]	Input Frequency	50 to 60 Hz
Main Application	Industrial	Power (Rated) (Nom)	18 W
Nominal Lifetime (Nom)	50000 h	Lamp Current (Max)	82 mA
Switching Cycle	200000X	Lamp Current (Min)	75 mA
B50L70	50000 h	Starting Time (Nom)	0.5 s
Light Technical		Warm Up Time to 60% Light (Nom)	0.1 s
Color Code	830 [CCT of 3000K]	Power Factor (Nom)	0.9
Beam Angle (Nom)	160 °	Voltage (Nom)	220-240 V
Luminous Flux (Nom)	2300 lm	Temperature	
Luminous Flux (Rated) (Nom)	2300 lm	T-Ambient (Max)	35 °C
Rated Beam Angle	160 °	T-Ambient (Min)	-20 °C
Correlated Color Temperature (Nom)	3000 K	T-Storage (Max)	65 °C
Luminous Efficacy (rated) (Nom)	128 lm/W	T-Storage (Min)	-40 °C
Color Consistency	<6	T-Case Maximum (Nom)	55 °C
Color Rendering Index (Nom)	83	Controls and Dimming	
LLMF At End Of Nominal Lifetime (Nom)	70 %	Dimmable	No

MASTER LEDtube EM/Mains T8

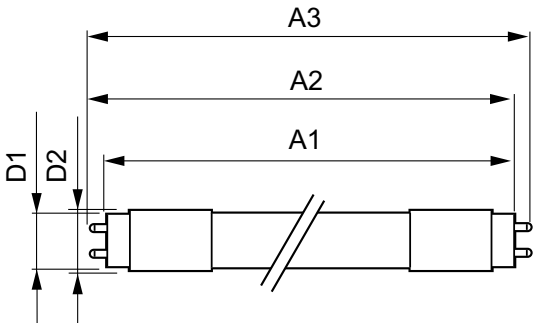
Mechanical and Housing	
Product Length	1200 mm
Approval and Application	
Energy Efficiency Label (EEL)	A++
Energy Saving Product	Yes
Suitable For Accent Lighting	No
Approval Marks	CE marking KEMA Keur certificate RoHS compliance
Energy Consumption kWh/1000 h	18 kWh

Product Data	
Full product code	871869656527800
Order product name	MAS LEDtube 1200mm UO 18W 830 T8 RN
EAN/UPC - Product	8718696565278
Order code	929001221902
Numerator - Quantity Per Pack	1
Numerator - Packs per outer box	10
Material Nr. (12NC)	929001221902
Net Weight (Piece)	0.270 kg

Warnings and Safety

- NOTES: The overall energy efficiency and light distribution of any installation that uses these lamps are determined by the design of the installation.

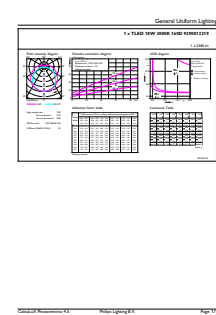
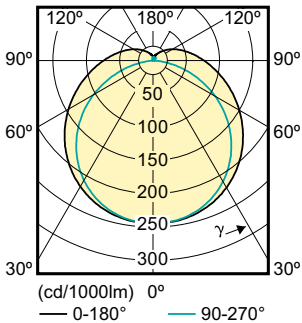
Dimensional drawing



TLED 4ft 220-240V 18W-36W 3000K G13 ND

Product	D1	D2	A1	A2	A3
MAS LEDtube 1200mm UO 18W 830 T8 RN	25.78 mm	28 mm	1198.2 mm	1205.3 mm	1212.4 mm

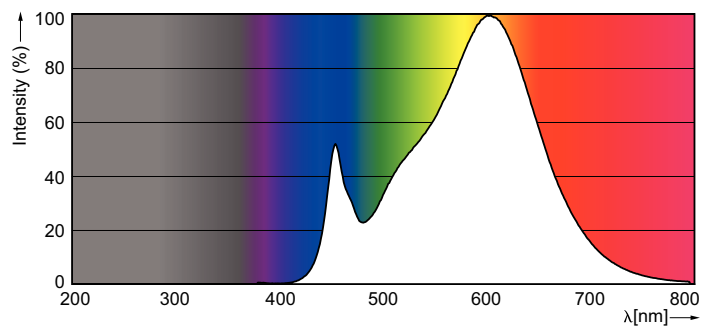
Photometric data



TLED 4ft 220-240V 18W-36W 3000K G13

MASTER LEDtube EM/Mains T8

Photometric data



LEDtube 1200 mm UO 20 W /830 T8 ROT

