



T12

20T12 EM LED/48-6500 IF G 10/1

Philips UniversalFit TLEDs offer unique ballast compatibility working with both electronic (instant-start) and magnetic ballasts while meeting the revised UL1993 standards. The UniversalFit TLEDs are engineered to deliver excellent lighting effects and substantial energy savings while providing unmatched user & installer safety.

Product data

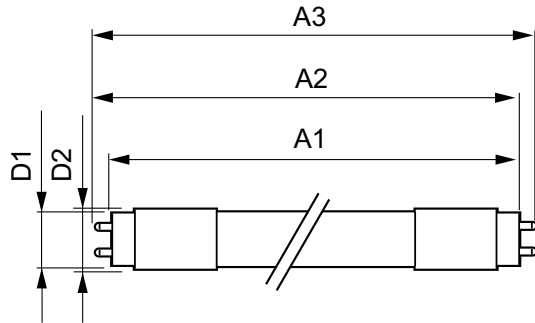
General Information		Starting Time (Nom)	
Cap-Base	G13 [Medium Bi-Pin Fluorescent]		0.5 s
Main Application	Industrial	Warm Up Time to 60% Light (Nom)	0.5 s
Nominal Lifetime (Nom)	36000 h	Power Factor (Nom)	0.5
Switching Cycle	50000X	Voltage (Nom)	120-277 V
B50L70	36000 h		
Light Technical		Temperature	
Color Code	865 [CCT of 6500K]	T-Ambient (Max)	35 °C
Beam Angle (Nom)	240 °	T-Ambient (Min)	-20 °C
Luminous Flux (Nom)	2100 lm	T-Storage (Max)	65 °C
Luminous Flux (Rated) (Nom)	2100 lm	T-Storage (Min)	-40 °C
Rated Beam Angle	240 °	T-Case Maximum (Nom)	65 °C
Correlated Color Temperature (Nom)	6500 K		
Color Consistency	<6	Controls and Dimming	
Color Rendering Index (Nom)	82	Dimmable	No
LLMF At End Of Nominal Lifetime (Nom)	70 %	Mechanical and Housing	
		Product Length	1200 mm
Operating and Electrical		Approval and Application	
Input Frequency	60 Hz	Energy Efficiency Label (EEL)	A+
Power (Rated) (Nom)	20 W	Energy Saving Product	Yes
Lamp Current (Max)	220 mA	Suitable For Accent Lighting	No
Lamp Current (Min)	90 mA	Approval Marks	RoHS compliance UL certificate

T12

Energy Consumption kWh/1000 h	20 kWh
Product Data	
Order product name	20T12 EM LED/48-6500 IF G 10/1
EAN/UPC - Product	046677463120
Order code	929001226604

Numerator - Quantity Per Pack	1
Numerator - Packs per outer box	10
Material Nr. (12NC)	929001226604
Net Weight (Piece)	0.001 kg

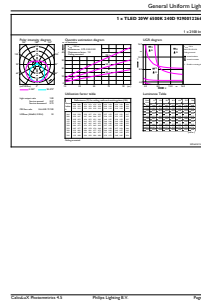
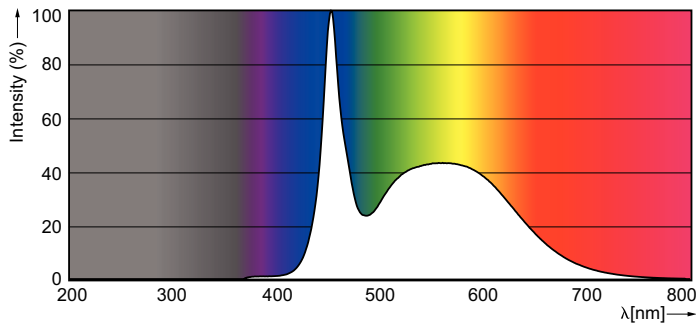
Dimensional drawing



TLED T12 120-277V 20-34/40W 6500K G13 ND

Product	D1	D2	A1	A2	A3
20T12 EM LED/48-6500 IF G 10/1	26 mm	28 mm	1198 mm	1205 mm	1212 mm

Photometric data



LEDtubes, TLED T12 120-277V 20W 6500K G13

