



# T8

## 16.5T8 LED/48-5000 IF 10/1 UHO

Our TLEDs are available in InstantFit (Type A / Type C) or MainsFit (Ballast bypass / Type B) versions. The InstantFit lamps work on a broad variety of ballasts and LED drivers. Only InstantFit has over 15,000 lamp & ballast combinations delivering even light output, energy savings and a long lifetime. Our MainsFit products feature a double-ended design, simplifying installation while a proprietary safety circuit minimizes a shock risk. Lamp sizes range from 2-foot to 8-foot and U-bend with a variety of lumen outputs.

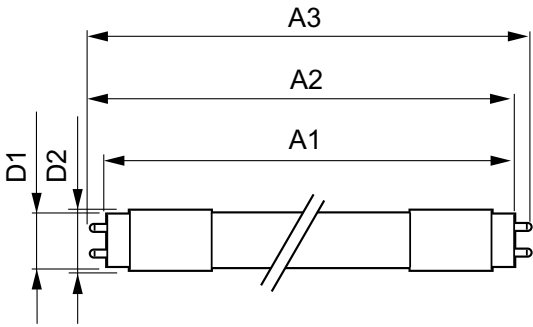
### Product data

|                                       |                                  |  |  |           |
|---------------------------------------|----------------------------------|--|--|-----------|
| <b>General Information</b>            |                                  | <b>Starting Time (Nom)</b>             |  | 0.5 s     |
| Cap-Base                              | G13 [ Medium Bi-Pin Fluorescent] | <b>Warm Up Time to 60% Light (Nom)</b> |  | 0.5 s     |
| EU RoHS compliant                     | Yes                              | <b>Power Factor (Nom)</b>              |  | 0.9       |
| Nominal Lifetime (Nom)                | 70000 h                          | <b>Voltage (Nom)</b>                   |  | 120-277 V |
| Switching Cycle                       | 50000X                           |  |  |           |
| <b>Light Technical</b>                |                                  | <b>Temperature</b>                     |  |           |
| Color Code                            | 850 [ CCT of 5000K]              | <b>T-Storage (Max)</b>                 |  | 65 °C     |
| Beam Angle (Nom)                      | 160 °                            | <b>T-Storage (Min)</b>                 |  | -40 °C    |
| Luminous Flux (Nom)                   | 2500 lm                          | <b>T-Case Maximum (Nom)</b>            |  | 45 °C     |
| Correlated Color Temperature (Nom)    | 5000 K                           | <b>Controls and Dimming</b>            |  |           |
| Color Consistency                     | <6                               | <b>Dimmable</b>                        |  | No        |
| Color Rendering Index (Nom)           | 82                               |  |  |           |
| LLMF At End Of Nominal Lifetime (Nom) | 70 %                             | <b>Mechanical and Housing</b>          |  |           |
| <b>Operating and Electrical</b>       |                                  | <b>Product Length</b>                  |  | 1200 mm   |
| Input Frequency                       | 50 to 60 Hz                      | <b>Approval and Application</b>        |  |           |
| Power (Nom)                           | 16.5 W                           | <b>Energy Efficiency Label (EEL)</b>   |  | A+        |
| Lamp Current (Max)                    | 350 mA                           | <b>Energy Saving Product</b>           |  | Yes       |
| Lamp Current (Min)                    | 110 mA                           | <b>Suitable For Accent Lighting</b>    |  | No        |

|                               |  |
|-------------------------------|--|
| Approval Marks                | CE marking UL certificate DLC compliance |
| Energy Consumption kWh/1000 h | 20 kWh                                   |
| Energy Certifications         | DLC Standard                             |
| Product Data                  |  |
| Order product name            | 16.5T8 LED/48-5000 IF 10/1 UHO           |
| EAN/UPC - Product             | 046677463151                             |

|                                 |              |
|---------------------------------|--------------|
| Order code                      | 929001226904 |
| Numerator - Quantity Per Pack   | 1            |
| Numerator - Packs per outer box | 10           |
| Material Nr. (12NC)             | 929001226904 |
| Net Weight (Piece)              | 0.220 kg     |

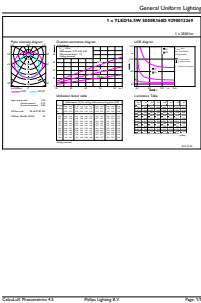
Dimensional drawing



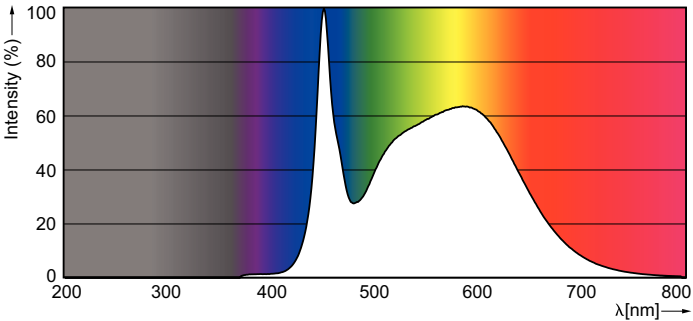
TLED120-277V 16.5W-25/28/32W 5000K G13ND

| Product                        | D1       | D2    | A1      | A2      | A3      |
|--------------------------------|----------|-------|---------|---------|---------|
| 16.5T8 LED/48-5000 IF 10/1 UHO | 25.68 mm | 28 mm | 1198 mm | 1205 mm | 1212 mm |

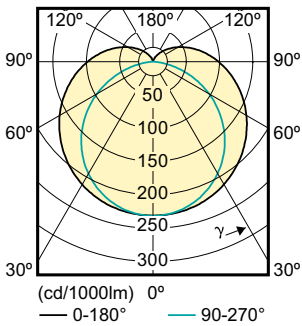
Photometric data



LEDtube 16.5 W, 850, G13, T8, UHO



LEDtube 16.5 W, 850, G13, T8, UHO



LEDtube 16.5 W, G13, T8, UHO

