



Essential LED tubes T5 Mains

ESSENTIAL LEDtube 600mm 8W840 G5 I MX

The Essential LEDtube T5 is an affordable LED solution suitable for replacing T5 fluorescent lamps. Thanks to a unique design, Philips Essential LED tube T5 Mains can be directly installed in luminaires operating on mains power connection. The product provides a natural lighting effect for use in general lighting applications, as well as instant energy savings – an environmentally friendly solution.

Product data

General Information	
Cap-Base	G5 [G5]
Nominal Lifetime (Nom)	30000 h
Switching Cycle	50000X
B50L70	30000 h

Light Technical	
Color Code	840 [CCT of 4000K]
Luminous Flux (Nom)	900 lm
Luminous Flux (Rated) (Nom)	900 lm
Correlated Color Temperature (Nom)	4000 K
Color Consistency	<6
Color Rendering Index (Nom)	80
LLMF At End Of Nominal Lifetime (Nom)	70 %

Operating and Electrical	
Input Frequency	50 to 60 Hz
Power (Rated) (Nom)	8 W
Lamp Current (Max)	75 mA
Lamp Current (Min)	30 mA

Starting Time (Nom)	0.5 s
Warm Up Time to 60% Light (Nom)	0.5 s
Power Factor (Nom)	0.92
Voltage (Nom)	100-240 V

Temperature	
T-Ambient (Max)	45 °C
T-Ambient (Min)	-20 °C
T-Storage (Max)	65 °C
T-Storage (Min)	-40 °C
T-Case Maximum (Nom)	70 °C

Controls and Dimming	
Dimmable	No

Mechanical and Housing	
Product Length	600 mm

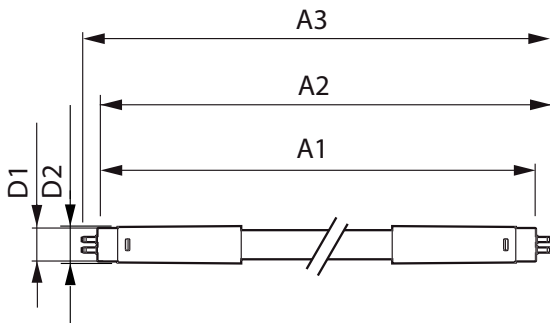
Approval and Application	
Energy Efficiency Label (EEL)	A+

Essential LED tubes T5 Mains

Energy Saving Product	Yes
Approval Marks	CE marking RoHS compliance KEMA Keur certificate
Product Data	
Full product code	871869666756900
Order product name	ESSENTIAL LEDtube 600mm 8W840 G5 I MX
EAN/UPC - Product	8718696667569

Order code	929001275412
Numerator - Quantity Per Pack	1
Numerator - Packs per outer box	20
Material Nr. (12NC)	929001275412
Net Weight (Piece)	0.076 kg

Dimensional drawing



TLED 100-240V 8-14W 4000K G5 ND

Product	D1	D2	A1	A2	A3
ESSENTIAL LEDtube 600mm 8W840 G5 I MX	15.8 mm	19 mm	549 mm	556.1 mm	563.2 mm

