

T5

24T5HO/46-835/IF33/P/DIM 10/1

Philips T5 LED tubes offer an affordable, energy saving retrofit solution. The T5 lamps have been engineered to withstand the test of time with a 50,000-hour lifetime and a limited 5-year warranty to back it up. The lighting performance effectively replaces conventional fluorescent T5 HO or T5 HE lamps. Available in either InstantFit (Type A or Type C) or MainsFit (Type B / Ballast bypass), Philips T5 TLEDs provide a variety of options for any application.

Product data

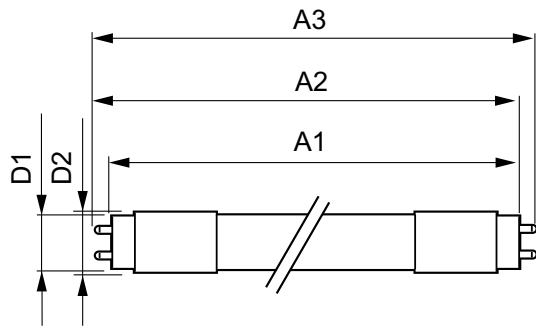
General Information	
Cap-Base	G5 [G5]
Nominal Lifetime (Nom)	50000 h
Switching Cycle	50000X
B50L70	50000 h
Light Technical	
Color Code	835 [CCT of 3500K]
Luminous Flux (Nom)	3300 lm
Luminous Flux (Rated) (Nom)	3300 lm
Correlated Color Temperature (Nom)	3500 K
Color Consistency	<5
Color Rendering Index (Nom)	82
LLMF At End Of Nominal Lifetime (Nom)	70 %
Operating and Electrical	
Input Frequency	40000-80000 Hz
Power (Rated) (Nom)	24 W
Lamp Current (Max)	600 mA
Lamp Current (Min)	400 mA
Starting Time (Nom)	0.5 s

Warm Up Time to 60% Light (Nom)	0.5 s
Power Factor (Nom)	0.9
Voltage (Nom)	39-64 V
Temperature	
T-Ambient (Max)	45 °C
T-Ambient (Min)	-20 °C
T-Storage (Max)	65 °C
T-Storage (Min)	-40 °C
Controls and Dimming	
Dimmable	Yes
Mechanical and Housing	
Product Length	1200 mm
Approval and Application	
Energy Saving Product	Yes
Approval Marks	UL certificate RoHS compliance DLC compliance

DesignLights Consortium Qualified Product List	DesignLights Consortium Qualified Product List
Product Data	
Order product name	24T5HO/46-835/IF33/P/DIM 10/1
EAN/UPC - Product	046677467135
Order code	929001283804

Numerator - Quantity Per Pack	1
Numerator - Packs per outer box	10
Material Nr. (12NC)	929001283804
Net Weight (Piece)	0.170 kg

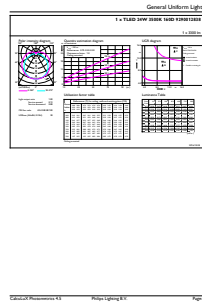
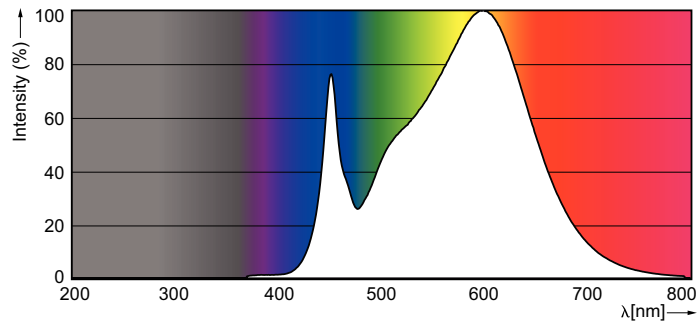
Dimensional drawing



TLED 120V 24-54W 3600lm 3500K G5

Product	D1	D2	A1	A2	A3
24T5HO/46-835/IF33/P/DIM 10/1	15.2 mm	17.8 mm	1147.8 mm	1154.9 mm	1162 mm

Photometric data



LEDtube 1100mm 24W G5 835 3300lm

