



MasterClass LEDtube InstantFit T5

24T5HO/46-840/IF35/P/DIM 10/1

The Masterclass LED Type A - Ballast Driven (Plug and Play) InstantFit TLED is a great LED solution suitable for replacing T5 fluorescent lamps, using an existing ballast.

Product data

General Information	
Cap-Base	G5 [G5]
Nominal Lifetime (Nom)	50000 h
Switching Cycle	50000X
B50L70	50000 h

Light Technical	
Color Code	840 [CCT of 4000K]
Luminous Flux (Nom)	3500 lm
Luminous Flux (Rated) (Nom)	3500 lm
Correlated Color Temperature (Nom)	4000 K
Color Consistency	<5
Color Rendering Index (Nom)	82
LLMF At End Of Nominal Lifetime (Nom)	70 %

Operating and Electrical	
Input Frequency	40000-80000 Hz
Power (Rated) (Nom)	24 W
Lamp Current (Max)	600 mA
Lamp Current (Min)	400 mA
Starting Time (Nom)	0.5 s

Warm Up Time to 60% Light (Nom)	0.5 s
Power Factor (Nom)	0.9
Voltage (Nom)	39-64 V

Temperature	
T-Ambient (Max)	45 °C
T-Ambient (Min)	-20 °C
T-Storage (Max)	65 °C
T-Storage (Min)	-40 °C

Controls and Dimming	
Dimmable	Yes

Mechanical and Housing	
Product Length	1200 mm

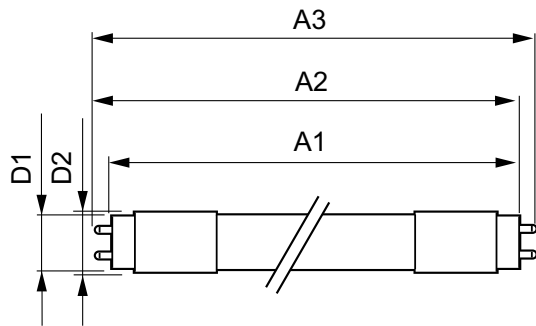
Approval and Application	
Energy Saving Product	Yes
Approval Marks	UL certificate RoHS compliance DLC compliance

MasterClass LEDtube InstantFit T5

DesignLights Consortium Qualified Product List	DesignLights Consortium Qualified Product List
Product Data	
Order product name	24T5HO/46-840/IF35/P/DIM 10/1
EAN/UPC - Product	046677467142
Order code	929001283904

Numerator - Quantity Per Pack	1
Numerator - Packs per outer box	10
Material Nr. (12NC)	929001283904
Net Weight (Piece)	0.170 kg

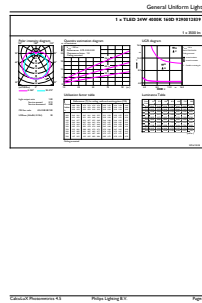
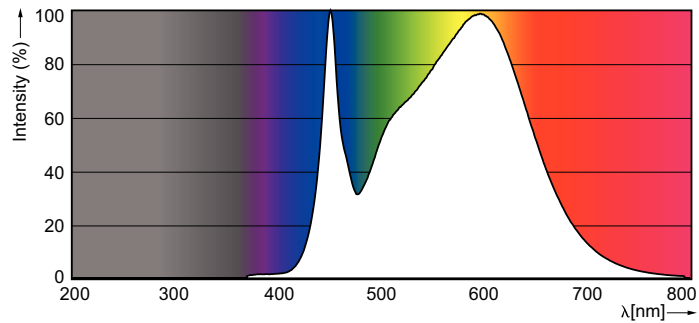
Dimensional drawing



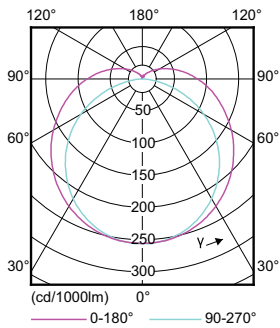
TLED 120V 24-54W 3600lm 4000K G5

Product	D1	D2	A1	A2	A3
24T5HO/46-840/IF35/P/DIM 10/1	15.2 mm	17.8 mm	1147.8 mm	1154.9 mm	1162 mm

Photometric data



LEDtube 1100mm 24W G5 840 3500lm



MasterClass LEDtube InstantFit T5

