

MASTER LEDtube InstantFit HF

MASTER LEDtube HF 1200mm HO 14W840 T8

The Philips MASTER LEDtube integrates a LED light source into a traditional fluorescent form factor. Its unique design creates a perfectly uniform visual appearance which cannot be distinguished from traditional fluorescent. This product is the ideal solution for up lighting in general lighting applications.

Product data

General Information	
Cap base	G13 [Medium Bi-Pin Fluorescent]
RoHS mark	RoHS mark
Main application	Industrial
Nominal lifetime (nom.)	60000 h
Switching cycle	50000X
B50L70	60000 h
Light Technical	
Colour code	840 [CCT of 4,000 K]
Beam Angle (Nom)	160 °
Luminous flux (nom.)	2100 lm
Luminous flux (rated) (nom.)	2100 lm
Rated beam angle	160 °
Correlated colour temperature (nom.)	4000 K
Colour consistency	<6
Color rendering index (nom.)	83
LLMF at end of nominal lifetime (nom.)	70 %

Operating and Electrical	
Input frequency	20000-75000 Hz
Power (Rated) (Nom)	14 W
Lamp current (max.)	750 mA
Lamp current (min.)	300 mA
Starting time (nom.)	0.5 s
Warm-up time to 60% light (nom.)	0.5 s
Power factor (nom.)	0.9
Voltage (Nom)	30-80 V
Temperature	
T ambient (max.)	45 °C
T ambient (min.)	-20 °C
T storage (max.)	65 °C
T storage (min.)	-40 °C
T-Case maximum (nom.)	55 °C
Controls and Dimming	
Dimmable	Yes

MASTER LEDtube InstantFit HF

Mechanical and Housing

Product length 1200 mm

Approval and Application

Energy efficiency label (EEL) A++
 Energy-saving product Yes
 Approval marks RoHS compliance CE marking KEMA Keur certificate
 Energy Consumption kWh/1000 h 17 kWh

Product Data

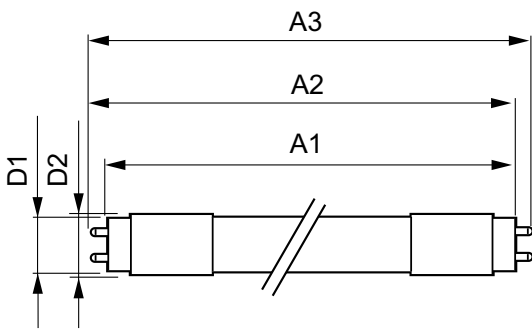
Full product code 871869668748200

Order product name	MASTER LEDtube HF 1200mm HO 14W840 T8
EAN/UPC – product	8718696687482
Order code	68748200
Numerator – quantity per pack	1
Numerator – packs per outer box	10
Material no. (12NC)	929001284102
Net weight (piece)	0.450 kg

Warnings and Safety

- NOTES: The overall energy efficiency and light distribution of any installation that uses these lamps are determined by the design of the installation.

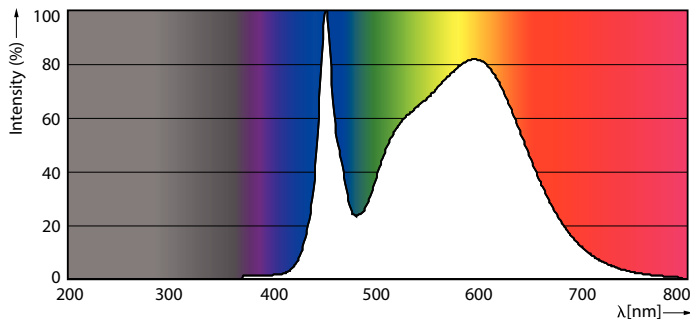
Dimensional drawing



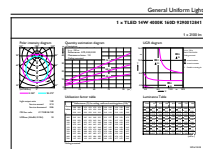
MAS LEDtube HF 1200mm HO 14W840 T8

Product	D1	D2	A1	A2	A3
MASTER LEDtube HF 1200mm HO 14W840 T8	25.6 mm	28 mm	1198.1 mm	1205.2 mm	1212.3 mm

Photometric data



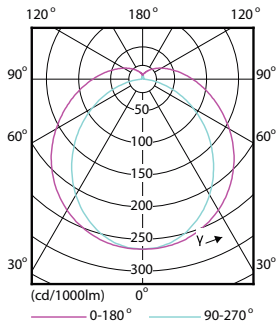
MAS LEDtube HF 1200mm HO 14W840 T8



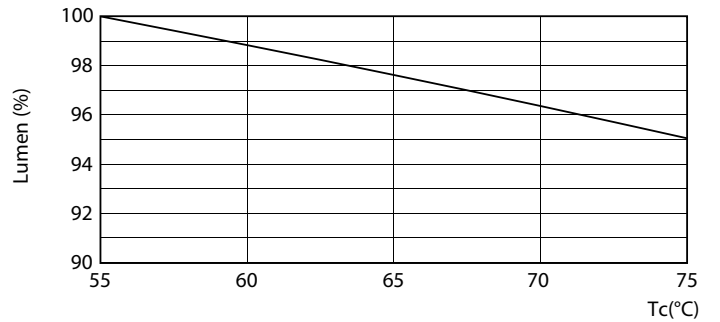
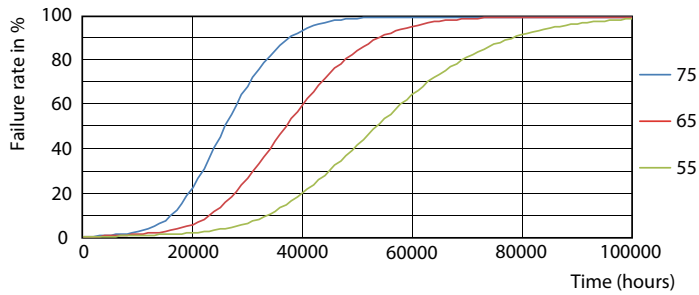
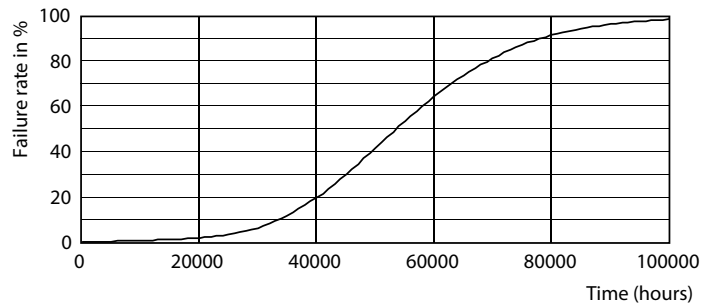
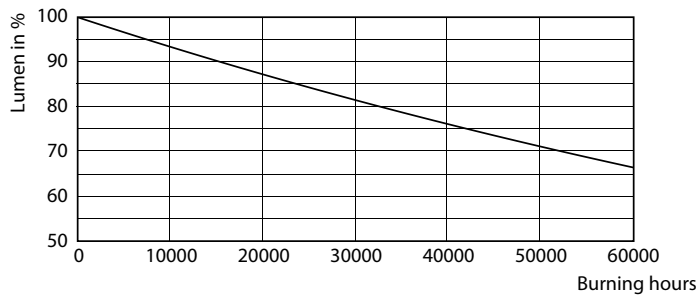
MAS LEDtube HF 1200mm HO 14W840 T8

MASTER LEDtube InstantFit HF

Photometric data



Lifetime



LEDtube HF HO-UO 14-24W G13 830-865 T8

LEDtube HF 1200mm HO-UO 14-16W G13 830-865 T8

MASTER LEDtube InstantFit HF

Lifetime



LEDtube HF HO-UO 14-24W G13 830-865 T8

