

MASTER LEDtube InstantFit HF



MASTER LEDtube HF 1500mm HO 20W840 T8

The Philips MASTER LEDtube integrates a LED light source into a traditional fluorescent form factor. Its unique design creates a perfectly uniform visual appearance which cannot be distinguished from traditional fluorescent. This product is the ideal solution for up lighting in general lighting applications.

Warnings and Safety

- NOTES: The overall energy efficiency and light distribution of any installation that uses these lamps are determined by the design of the installation.

Product data

General Information	
Cap base	G13 ROT (Rotating) [Medium Bi-Pin Fluorescent]
Nominal lifetime	60,000 h
Switching Cycle	50,000
Lighting Technology	LED
Flux measurement reference	Sphere
CE mark	Yes
EU RoHS compliant	Yes

Light Technical

Colour Code	840 [CCT of 4000K]
Beam angle (nom.)	160 degree(s)
Luminous Flux	3,100 lm
Colour designation	Cool White (CW)
Correlated Colour Temperature	4000 K
Luminous efficacy (rated) (nom.)	155.00 lm/W
Colour consistency	<6

Colour rendering index (CRI)	83
LLMF at end of nominal lifetime (nom.)	70 %

Operating and Electrical

Line Frequency	20000-75000 Hz
Input frequency	20000-75000 Hz
Power Consumption	20 W
Lamp current (max.)	750 mA
Lamp current (min.)	300 mA
Starting time (nom.)	0.5 s
Warm-up time to 60% light	0.5 s
Power Factor (Fraction)	0.9
Voltage (nom.)	30-80 V

Temperature

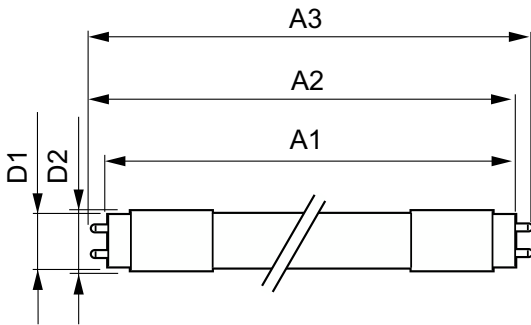
Ambient temperature range	-20°C to 45°C
---------------------------	---------------

MASTER LEDtube InstantFit HF

T-Case maximum (nom.)	55 °C
Controls and Dimming	
Dimmable	No
Mechanical and Housing	
Bulb material	Plastic
Product length	1,500 mm
Approval and Application	
Energy Efficiency Class	D
Energy-saving product	Yes
Approval marks	RoHS compliance TUV CE marking KEMA Keur certificate
Energy consumption kWh/1,000 hours	20 kWh

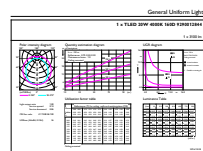
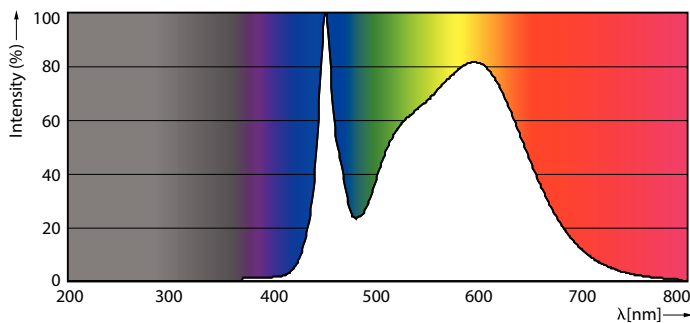
EPREL registration number	387370
Product Data	
Order product name	MAS LEDtube HF 1500mm HO 20W840 T8
Full product name	MASTER LEDtube HF 1500mm HO 20W840 T8
Full EOC	871869668754300
Order code	68754300
Material no. (12 NC)	929001284402
SAP numerator – quantity per pack	1
EAN/UPC – Product/Case	8718696687543
Numerator – packs per outer box	10
EAN/UPC - Case	8718696687550

Dimensional drawing



Product	D1	D2	A1	A2	A3
MAS LEDtube HF 1500mm HO 20W840 T8	25.6 mm	28 mm	1,498.7 mm	1,505.8 mm	1,512.9 mm

Photometric data

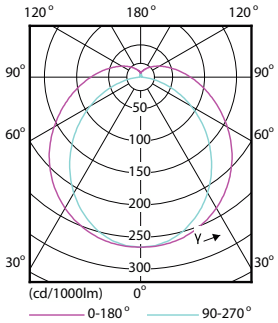


Spectral Power Distribution Colour - MAS LEDtube HF 1500mm HO 20W840 T8

General uniform lighting - MAS LEDtube HF 1500mm HO 20W840 T8

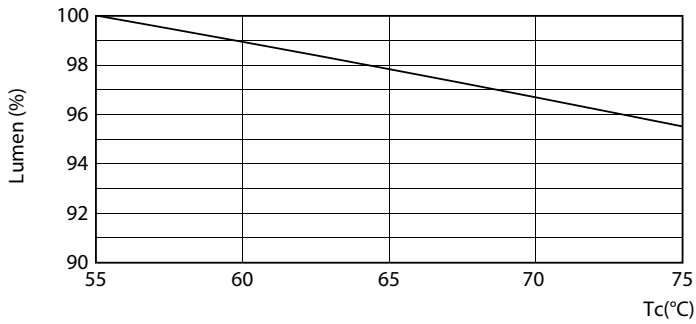
MASTER LEDtube InstantFit HF

Photometric data

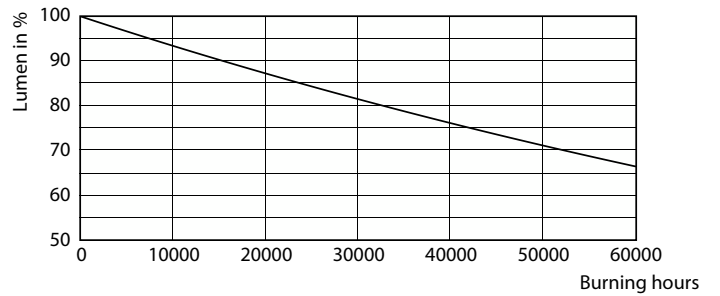


Light Distribution Diagram - MAS LEDtube HF 1500mm HO 20W840 T8

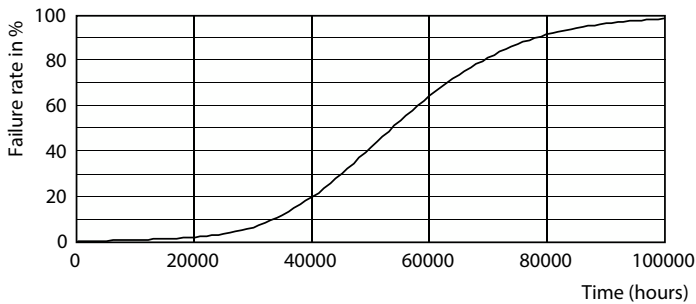
Lifetime



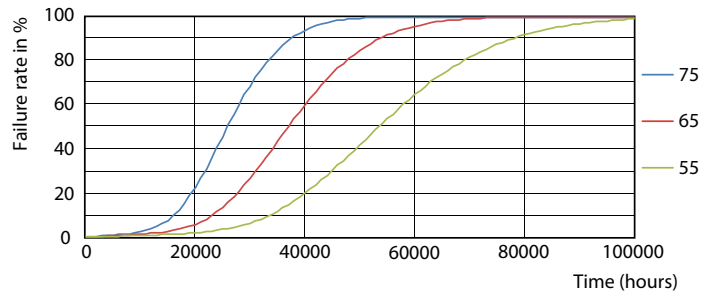
Lumen Maintenance Diagram - MAS LEDtube HF 1500mm HO 20W840 T8



Lumen Maintenance Diagram - MAS LEDtube HF 1500mm HO 20W840 T8



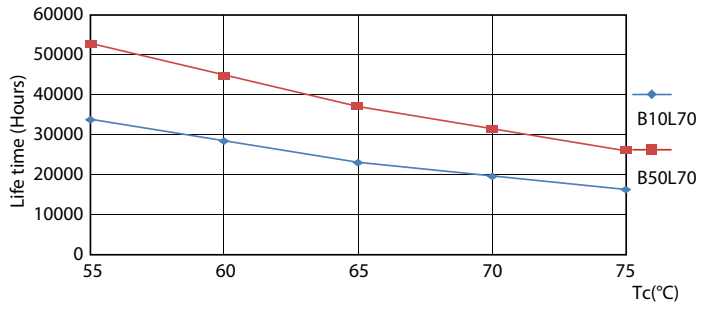
Life Expectancy Diagram - MAS LEDtube HF 1500mm HO 20W840 T8



Life Expectancy Diagram - MAS LEDtube HF 1500mm HO 20W840 T8

MASTER LEDtube InstantFit HF

Lifetime



Life Expectancy Diagram - MAS LEDtube HF 1500mm HO 20W840 T8

