



MASTER LEDtube EM/Mains T8

MAS LEDtube STD 1200mm 10.5W865 T8 I

The Philips MASTER LEDtube integrates a LED light source into a traditional fluorescent form factor. Its unique design creates a perfectly uniform visual appearance which cannot be distinguished from traditional fluorescent. This product is the ideal solution for up lighting in general lighting applications.

Product data

General Information	
Cap base	G13 [Medium Bi-Pin Fluorescent]
Nominal lifetime (nom.)	50000 h
Switching cycle	200000X
B50L70	50000 h

Light Technical	
Colour Code	865 [CCT of 6500K]
Lamp Luminous Flux 25°C EL (Nom)	1600 lm
Lamp Luminous Flux (Nom)	1600 lm
Colour Temperature, horizontal (Nom)	6500 K
Colour consistency	<6
Colour Rendering Index,horiz (Nom)	83
LLMF at end of nominal lifetime (nom.)	70 %

Operating and Electrical	
Input frequency	50 to 60 Hz
Technical Lamp Power (Nom)	10.5 W
Lamp current (max.)	50 mA
Lamp current (min.)	45 mA

Starting time (nom.)	0.5 s
Warm-up time to 60% light (nom.)	0.5 s
Power factor (nom.)	0.9
Voltage (nom.)	220-240 V

Temperature	
T ambient (max.)	45 °C
T ambient (min.)	-20 °C
T storage (max.)	65 °C
T storage (min.)	-40 °C
T-Case maximum (nom.)	50 °C

Controls and Dimming	
Dimmable	No

Mechanical and Housing	
Product length	1200 mm

Approval and Application	
Energy-saving product	Yes

MASTER LEDtube EM/Mains T8

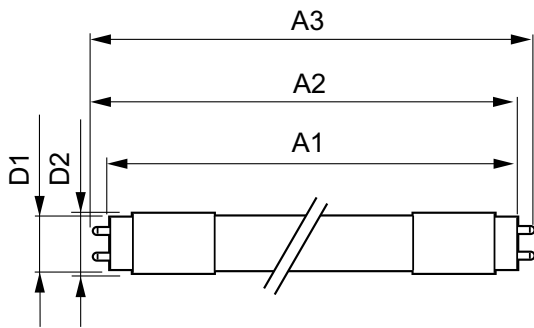
Energy efficiency label (EEL)	A++
Approval marks	CE marking RoHS compliance KEMA Keur certificate
Energy Consumption kWh/1000 h	11 kWh
Product Data	
Full product code	871869668770300
Order product name	MAS LEDtube STD 1200mm 10.5W865 T8 I
EAN/UPC – product	8718696687703

Order code	929001297708
Numerator – quantity per pack	1
Numerator – packs per outer box	10
Material no. (12NC)	929001297708
Net weight (piece)	0.251 kg

Warnings and Safety

• -

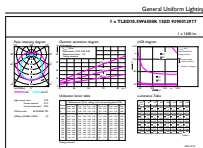
Dimensional drawing



TLED 220-240V 10.5W-36W 6500K G13 ND

Product	D1	D2	A1	A2	A3
MAS LEDtube STD 1200mm 10.5W865 T8 I	25.8 mm	28 mm	1198.2 mm	1205.3 mm	1212.4 mm

Photometric data



MASTER LEDtube EM/Mains T8

