



MASTER LEDtube EM/ Mains T8

MAS LEDtube 900mm HO 12W 840 T8

The Philips MASTER LEDtube integrates a LED light source into a traditional fluorescent form factor. Its unique design creates a perfectly uniform visual appearance which cannot be distinguished from traditional fluorescent. For those that are looking for value for money within limited budget and re-lamping efforts for better light effect and lifetime.

Product data

| General Information | |
|------------------------|----------------------------------|
| Cap-Base | G13 [Medium Bi-Pin Fluorescent] |
| RoHS mark | RoHS mark |
| Nominal Lifetime (Nom) | 50000 h |
| Switching Cycle | 200000X |
| B50L70 | 50000 h h |

| Light Technical | |
|---------------------------------------|---------------------|
| Color Code | 840 [CCT of 4000K] |
| Beam Angle (Nom) | 160 ° |
| Luminous Flux (Nom) | 1575 lm |
| Luminous Flux (Rated) (Nom) | 1575 lm |
| Rated Beam Angle | 160 ° |
| Correlated Color Temperature (Nom) | 4000 K |
| Color Consistency | <6 |
| Color Rendering Index (Nom) | 83 |
| LLMF At End Of Nominal Lifetime (Nom) | 70 % |

| Operating and Electrical | |
|--------------------------|-------------|
| Input Frequency | 50 to 60 Hz |

| | |
|---------------------------------|-----------|
| Power (Rated) (Nom) | 12 W |
| Lamp Current (Max) | 57 mA |
| Lamp Current (Min) | 51 mA |
| Starting Time (Nom) | 0.5 s |
| Warm Up Time to 60% Light (Nom) | 0.5 s |
| Power Factor (Nom) | 0.9 |
| Voltage (Nom) | 220-240 V |

| Temperature | |
|----------------------|--------|
| T-Ambient (Max) | 45 °C |
| T-Ambient (Min) | -20 °C |
| T-Storage (Max) | 65 °C |
| T-Storage (Min) | -40 °C |
| T-Case Maximum (Nom) | 50 °C |

| Controls and Dimming | |
|----------------------|----|
| Dimmable | No |

MASTER LEDtube EM/Mains T8

Mechanical and Housing

Product Length 900 mm

Approval and Application

Energy Efficiency Label (EEL) A++

Energy Saving Product Yes

Approval Marks TUV CE marking RoHS compliance KEMA Keur certificate

Energy Consumption kWh/1000 h 12 kWh

Product Data

Full product code 871869668708600

Order product name MAS LEDtube 900mm HO 12W 840 T8

EAN/UPC - Product 8718696687086

Order code 929001298402

Numerator - Quantity Per Pack 1

Numerator - Packs per outer box 10

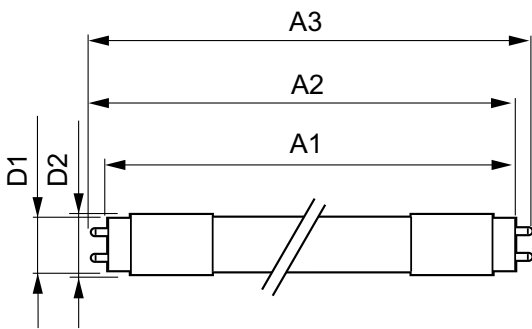
Material Nr. (12NC) 929001298402

Net Weight (Piece) 0.174 kg

Warnings and Safety

- NOTES: The overall energy efficiency and light distribution of any installation that uses these lamps are determined by the design of the installation.

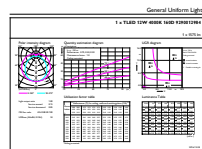
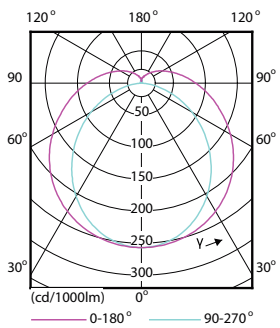
Dimensional drawing



TLED 3ft 12W-30W 1575lm 160D 4000K G13ND

| Product | D1 | D2 | A1 | A2 | A3 |
|---------------------------------|----------|-------|----------|----------|----------|
| MAS LEDtube 900mm HO 12W 840 T8 | 25.78 mm | 28 mm | 893.3 mm | 900.4 mm | 907.5 mm |

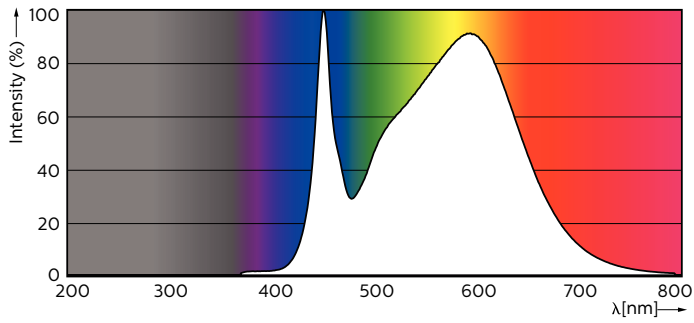
Photometric data



LEDtube 900mm HO 12W840 T8

MASTER LEDtube EM/Mains T8

Photometric data



Lifetime

