



MASTER LEDtube EM/ Mains

MAS LEDtube 1200mm HO 14W865 T8

The Philips MASTER LEDtube integrates a LED light source into a traditional fluorescent form factor. Its unique design creates a perfectly uniform visual appearance which cannot be distinguished from traditional fluorescent. This product is the ideal solution for up lighting in general lighting applications.

Product data

General Information	
Cap base	G13 [Medium Bi-Pin Fluorescent]
RoHS mark	RoHS mark
Nominal lifetime (nom.)	50000 h
Switching cycle	200000X
B50L70	50000 h

Light Technical	
Colour Code	865 [CCT of 6,500 K]
Lamp Luminous Flux 25°C EL (Nom)	2100 lm
Lamp Luminous Flux (Nom)	2100 lm
Colour Temperature, horizontal (Nom)	6500 K
Colour consistency	<6
Colour Rendering Index,horiz (Nom)	83
LLMF at end of nominal lifetime (nom.)	70 %

Operating and Electrical	
Input frequency	50 to 60 Hz
Power (Rated) (Nom)	14 W
Lamp current (max.)	65 mA

Lamp current (min.)	60 mA
Starting time (nom.)	0.5 s
Warm-up time to 60% light (nom.)	0.5 s
Power factor (nom.)	0.9
Voltage (Nom)	220-240 V

Temperature	
T ambient (max.)	45 °C
T ambient (min.)	-20 °C
T storage (max.)	65 °C
T storage (min.)	-40 °C
T-Case maximum (nom.)	55 °C

Controls and Dimming	
Dimmable	No

Mechanical and Housing	
Product length	1200 mm

MASTER LEDtube EM/Mains

Approval and Application

Energy efficiency label (EEL)	A++
Energy-saving product	Yes
Approval marks	CE marking RoHS compliance KEMA Keur certificate
Energy Consumption kWh/1000 h	14 kWh

Product Data

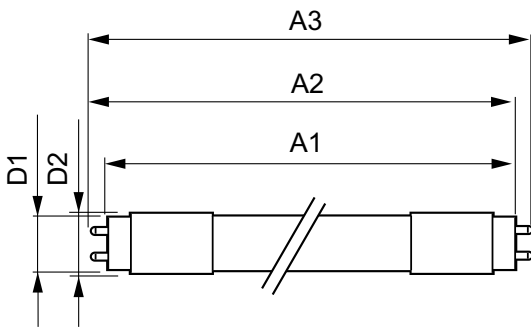
Full product code	871869668728400
-------------------	-----------------

Order product name	MAS LEDtube 1200mm HO 14W865 T8
EAN/UPC – product	8718696687284
Order code	929001299408
Numerator – quantity per pack	1
Numerator – packs per outer box	10
Material no. (12NC)	929001299408
Net weight (piece)	0.215 kg

Warnings and Safety

· -

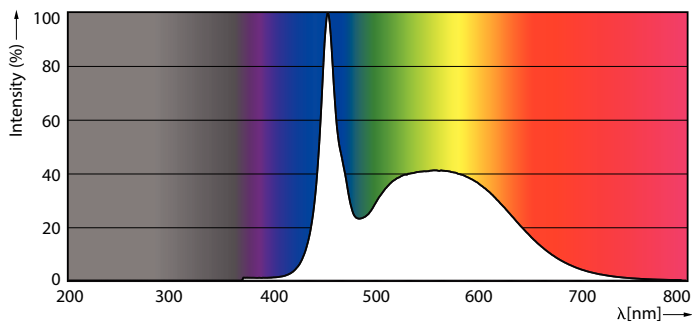
Dimensional drawing



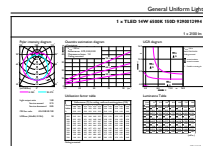
TLED 4ft 14W-36W 2100lm 150D 6500K G13ND

Product	D1	D2	A1	A2	A3
MAS LEDtube 1200mm HO 14W865 T8	25.8 mm	28 mm	1198.2 mm	1205.3 mm	1212.4 mm

Photometric data



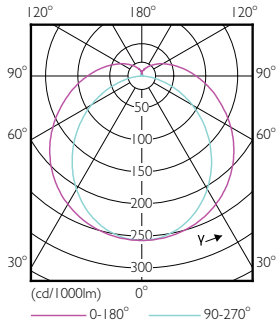
LEDtube 1500mm 20W G5 865 3000lm



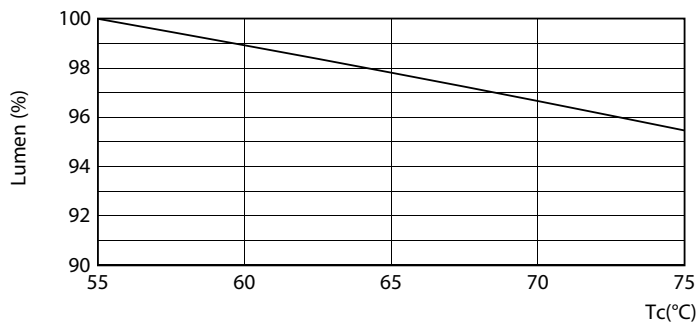
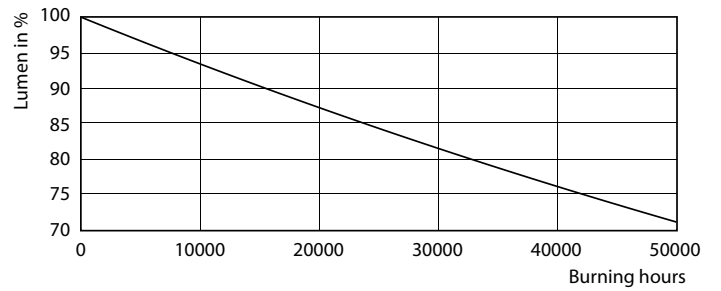
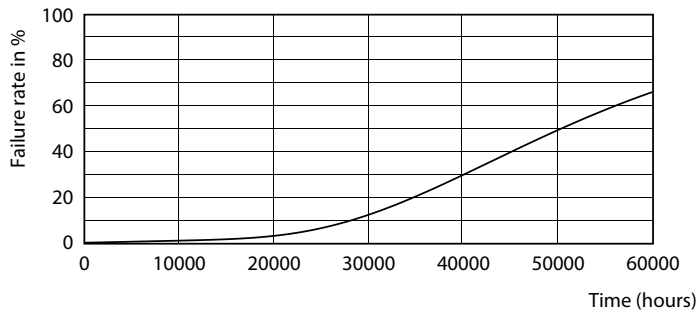
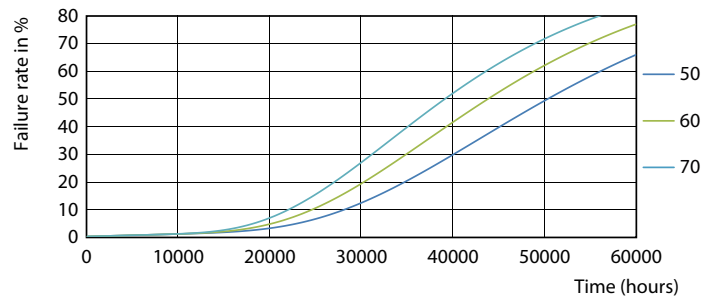
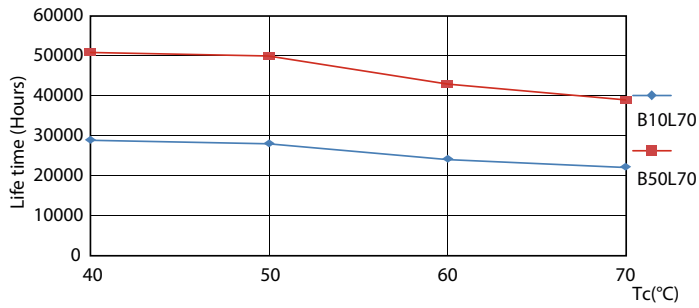
MAS LEDtube HO 14W G13 865 T8

MASTER LEDtube EM/Mains

Photometric data



Lifetime



MASTER LEDtube EM/Mains

