



# MASTER LEDtube InstantFit HF T8

## MASTER LEDtube HF 1200mm UO 16W840 T8

Philips MASTER LEDtube InstantFit T8 integrates a LED light source into a traditional fluorescent form factor. Its unique design creates a perfectly uniform visual appearance which cannot be distinguished from traditional fluorescent. Philips MASTER LEDtube InstantFit T8 is the ideal solution for customers who have higher light requirements and want to maximize value over lifetime.; Full energy savings & longer lifetime result in attractive payback times and TCO benefits.

### Product data

General Information	
Cap-Base	G13 [ Medium Bi-Pin Fluorescent]
RoHS mark	RoHS mark
Main Application	Industrial
Nominal Lifetime (Nom)	60000 h
Switching Cycle	50000X
B50L70	60000 h
Light Technical	
Color Code	840 [ CCT of 4000K]
Beam Angle (Nom)	160 °
Luminous Flux (Nom)	2500 lm
Luminous Flux (Rated) (Nom)	2500 lm
Rated Beam Angle	160 °
Correlated Color Temperature (Nom)	4000 K
Color Consistency	<6
Color Rendering Index (Nom)	83
LLMF At End Of Nominal Lifetime (Nom)	70 %

Operating and Electrical	
Input Frequency	20000-75000 Hz
Power (Rated) (Nom)	16 W
Lamp Current (Max)	750 mA
Lamp Current (Min)	300 mA
Starting Time (Nom)	0.5 s
Warm Up Time to 60% Light (Nom)	0.5 s
Power Factor (Nom)	0.9
Voltage (Nom)	30-80 V
Temperature	
T-Ambient (Max)	45 °C
T-Ambient (Min)	-20 °C
T-Storage (Max)	65 °C
T-Storage (Min)	-40 °C
T-Case Maximum (Nom)	55 °C

# MASTER LEDtube InstantFit HF T8

## Controls and Dimming

Dimmable	Yes
----------	-----

## Mechanical and Housing

Product Length	1200 mm
----------------	---------

## Approval and Application

Energy Efficiency Label (EEL)	A++
Energy Saving Product	Yes
Approval Marks	RoHS compliance TUV CE marking KEMA Keur certificate
Energy Consumption kWh/1000 h	20 kWh

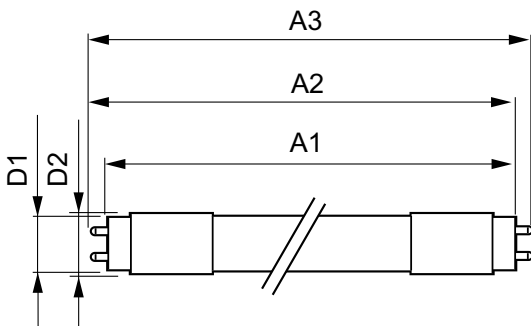
## Product Data

Full product code	871869668796300
Order product name	MASTER LEDtube HF 1200mm UO 16W840 T8
EAN/UPC - Product	8718696687963
Order code	929001300002
Numerator - Quantity Per Pack	1
Numerator - Packs per outer box	10
Material Nr. (12NC)	929001300002
Net Weight (Piece)	0.360 kg

## Warnings and Safety

- NOTES: The overall energy efficiency and light distribution of any installation that uses these lamps are determined by the design of the installation.

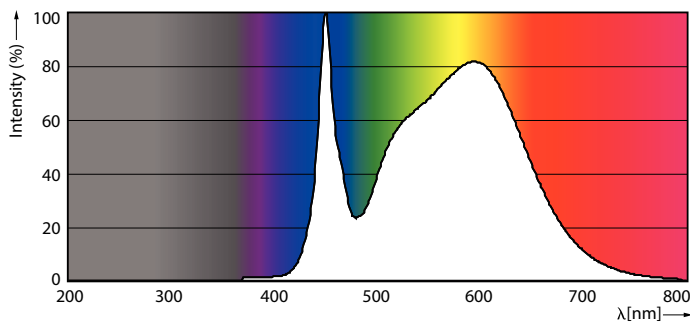
## Dimensional drawing



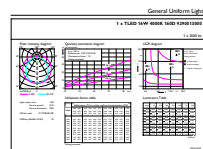
MAS LEDtube HF 1200mm UO 16W840 T8

Product	D1	D2	A1	A2	A3
MASTER LEDtube HF 1200mm UO 16W840 T8	25.6 mm	28 mm	1198.1 mm	1205.2 mm	1212.3 mm

## Photometric data



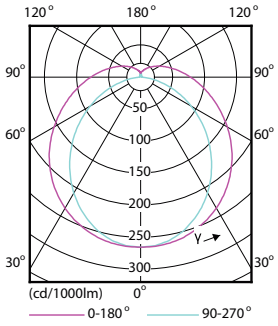
MAS LEDtube HF 1200mm UO 16W840 T8



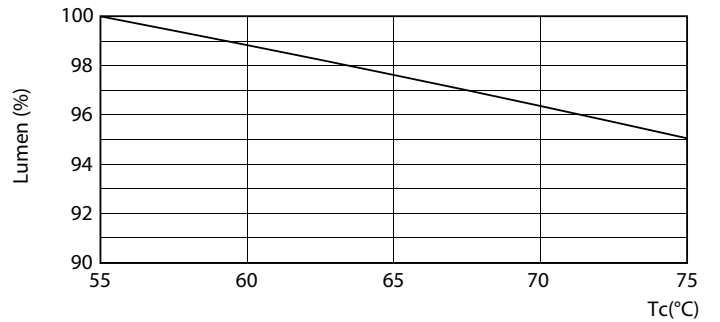
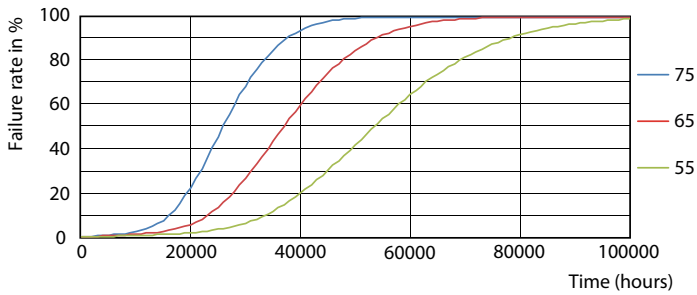
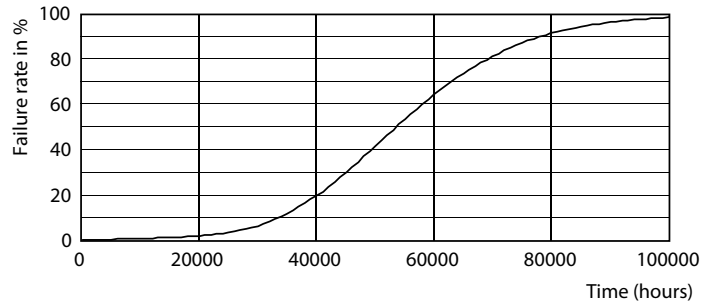
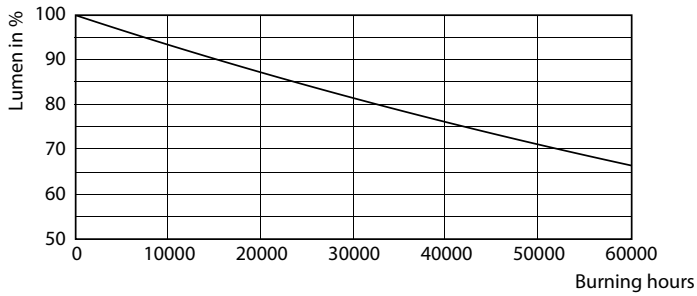
MAS LEDtube HF 1200mm UO 16W840 T8

# MASTER LEDtube InstantFit HF T8

## Photometric data



## Lifetime

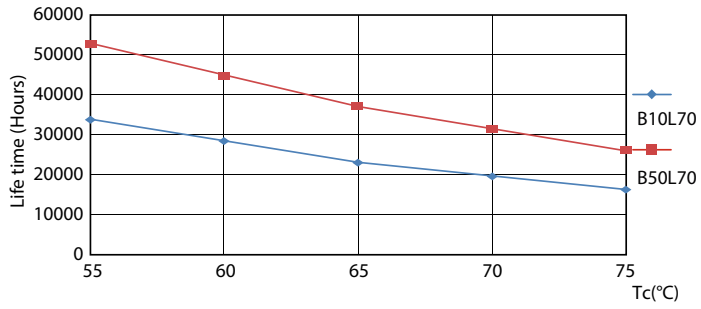


LEDtube HF HO-UO 14-24W G13 830-865 T8

LEDtube HF 1200mm HO-UO 14-16W G13 830-865 T8

# MASTER LEDtube InstantFit HF T8

## Lifetime



LEDtube HF HO-UO 14-24W G13 830-865 T8

