

MASTER LEDtube InstantFit HF

MASTER LEDtube HF 1500mm UO 24W830 T8

The Philips MASTER LEDtube integrates a LED light source into a traditional fluorescent form factor. Its unique design creates a perfectly uniform visual appearance which cannot be distinguished from traditional fluorescent. This product is the ideal solution for up lighting in general lighting applications.

Product data

General Information	
Cap base	G13 [Medium Bi-Pin Fluorescent]
RoHS mark	RoHS mark
Main application	Industrial
Nominal lifetime (nom.)	60000 h
Switching cycle	50000X
B50L70	60000 h
Light Technical	
Colour code	830 [CCT of 3,000 K]
Beam Angle (Nom)	160 °
Luminous flux (nom.)	3500 lm
Luminous flux (rated) (nom.)	3500 lm
Rated beam angle	160 °
Correlated colour temperature (nom.)	3000 K
Colour consistency	<6
Color rendering index (nom.)	83
LLMF at end of nominal lifetime (nom.)	70 %

Operating and Electrical	
Input frequency	20000-75000 Hz
Power (Rated) (Nom)	24 W
Lamp current (max.)	750 mA
Lamp current (min.)	300 mA
Starting time (nom.)	0.5 s
Warm-up time to 60% light (nom.)	0.5 s
Power factor (nom.)	0.9
Voltage (Nom)	30-80 V
Temperature	
T ambient (max.)	45 °C
T ambient (min.)	-20 °C
T storage (max.)	65 °C
T storage (min.)	-40 °C
T-Case maximum (nom.)	55 °C
Controls and Dimming	
Dimmable	Yes

MASTER LEDtube InstantFit HF

Mechanical and Housing

Product length 1500 mm

Approval and Application

Energy efficiency label (EEL) A++
 Energy-saving product Yes
 Approval marks RoHS compliance CE marking KEMA Keur certificate
 Energy Consumption kWh/1000 h 29 kWh

Product Data

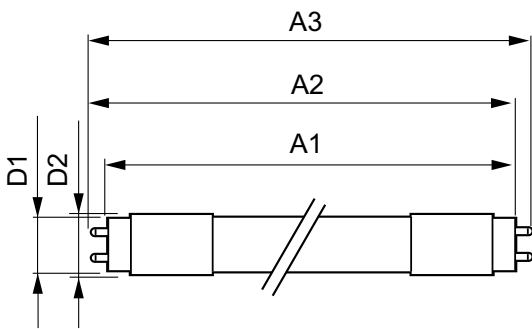
Full product code 871869668806900

Order product name	MASTER LEDtube HF 1500mm UO 24W830 T8
EAN/UPC – product	8718696688069
Order code	68806900
Numerator – quantity per pack	1
Numerator – packs per outer box	10
Material no. (12NC)	929001300502
Net weight (piece)	0.450 kg

Warnings and Safety

- NOTES: The overall energy efficiency and light distribution of any installation that uses these lamps are determined by the design of the installation.

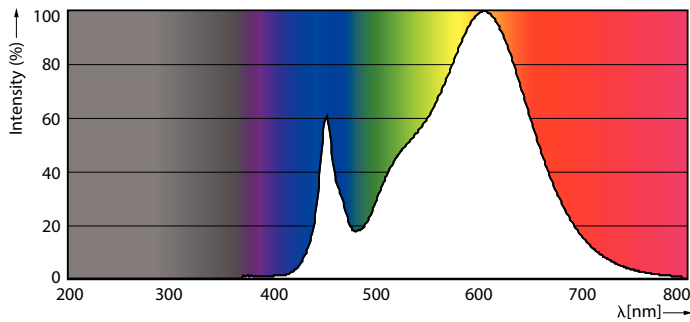
Dimensional drawing



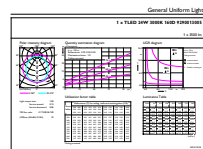
MAS LEDtube HF 1500mm UO 25W830 T8

Product	D1	D2	A1	A2	A3
MASTER LEDtube HF 1500mm UO 24W830 T8	25.6 mm	28 mm	1498.7 mm	1505.8 mm	1512.9 mm

Photometric data



MAS LEDtube HF 1500mm UO 24W830 T8



General Lighting Light distribution diagram

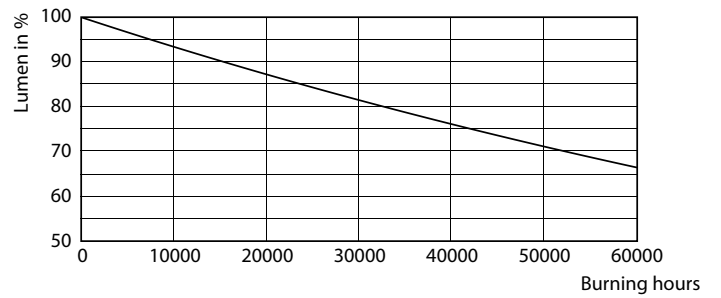
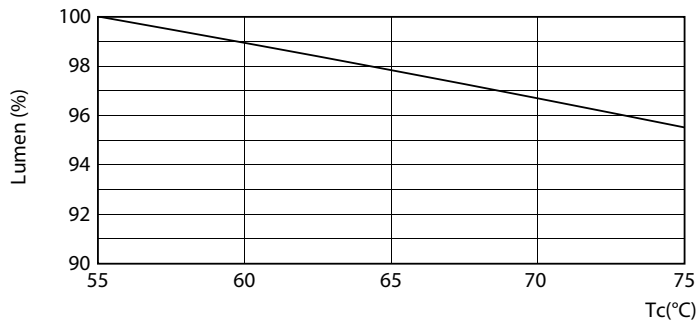
MAS LEDtube HF 1500mm UO 24W865 T8

MASTER LEDtube InstantFit HF

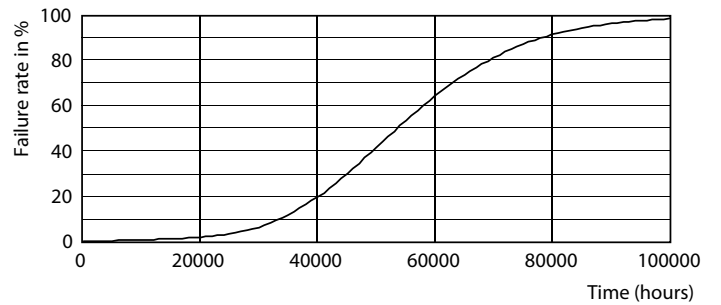
Photometric data



Lifetime

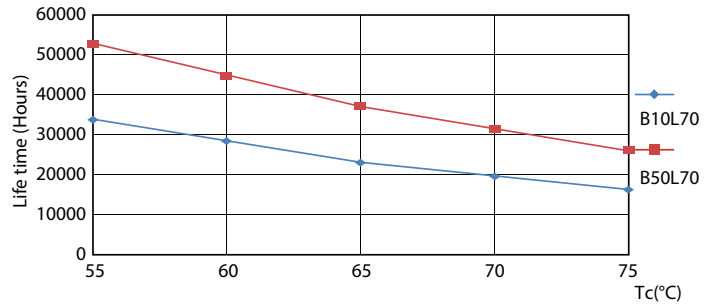
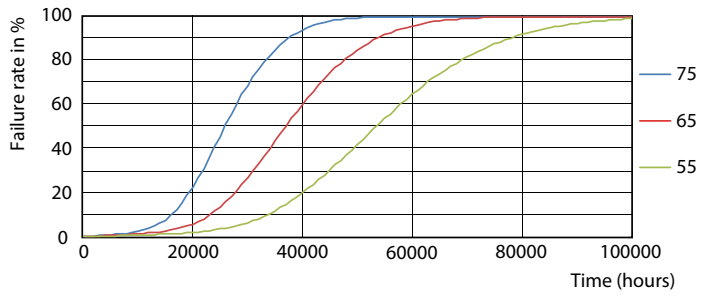


LEDtube HF 1500mm HO-UO 20-24W G13 830-865 T8



MASTER LEDtube InstantFit HF

Lifetime



LEDtube HF HO-UO 14-24W G13 830-865 T8

LEDtube HF HO-UO 14-24W G13 830-865 T8

