



MASTER LEDtube EM/ Mains

MAS LEDtube 600mm HO 8W865 T8

The Philips MASTER LEDtube integrates a LED light source into a traditional fluorescent form factor. Its unique design creates a perfectly uniform visual appearance which cannot be distinguished from traditional fluorescent. For those that are looking for value for money within limited budget and re-lamping efforts for better light effect and lifetime.

Product data

General Information		Lamp current (max.)	
Cap base	G13 [Medium Bi-Pin Fluorescent]		42 mA
Nominal lifetime (nom.)	50000 h	Lamp current (min.)	36 mA
Switching cycle	200000X	Starting time (nom.)	0.5 s
B50L70	50000 h	Warm-up time to 60% light (nom.)	0.5 s
Light Technical		Power factor (nom.)	0.9
Colour code	865 [CCT of 6,500 K]	Voltage (Nom)	220-240 V
Beam Angle (Nom)	160 °	Temperature	
Luminous flux (nom.)	1050 lm	T ambient (max.)	35 °C
Luminous flux (rated) (nom.)	1050 lm	T ambient (min.)	-20 °C
Rated beam angle	160 °	T storage (max.)	65 °C
Correlated colour temperature (nom.)	6500 K	T storage (min.)	-40 °C
Colour consistency	<6	T-Case maximum (nom.)	50 °C
Color rendering index (nom.)	83	Controls and Dimming	
LLMF at end of nominal lifetime (nom.)	70 %	Dimmable	No
Operating and Electrical		Mechanical and Housing	
Input frequency	50 to 60 Hz	Product length	600 mm
Power (Rated) (Nom)	8 W		

MASTER LEDtube EM/Mains

Approval and Application

Energy efficiency label (EEL)	A++
Energy-saving product	Yes
Approval marks	CE marking RoHS compliance KEMA Keur certificate
Energy Consumption kWh/1000 h	8 kWh

Product Data

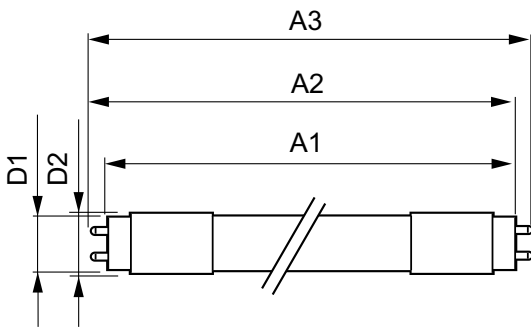
Full product code	871869669751100
-------------------	-----------------

Order product name	MAS LEDtube 600mm HO 8W865 T8
EAN/UPC – product	8718696697511
Order code	69751100
Numerator – quantity per pack	1
Numerator – packs per outer box	10
Material no. (12NC)	929001307202
Net weight (piece)	0.150 kg

Warnings and Safety

· -

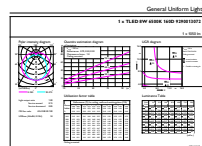
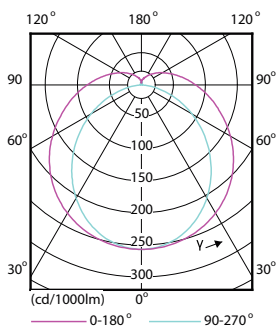
Dimensional drawing



TLED 220-240V 8W-18W 1050lm 6500K G13

Product	D1	D2	A1	A2	A3
MAS LEDtube 600mm HO 8W865 T8	25.78 mm	28 mm	588.5 mm	595.5 mm	602.5 mm

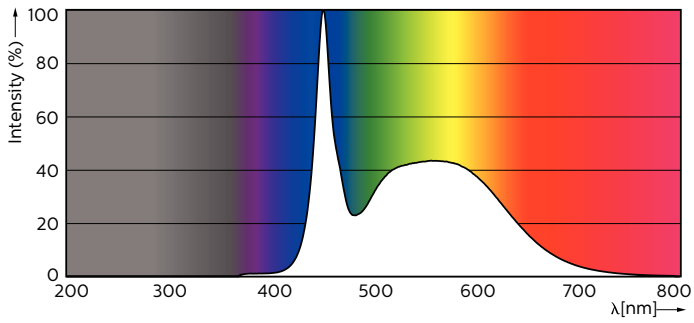
Photometric data



LEDtube 600mm HO 8W865 T8

MASTER LEDtube EM/Mains

Photometric data



Lifetime

