

MasterClass LEDtube InstantFit T8

7T8 LED/24-5000 IF 10/1

The Masterclass LED Type A - Ballast Driven (Plug and Play) InstantFit TLED is a great LED solution suitable for replacing T8 fluorescent lamps, using an existing ballast. Specific lamps can also be used on Philips Xitanium driver for Type C applications.

Product data

General Information	
Cap-Base	G13 [Medium Bi-Pin Fluorescent]
Nominal Lifetime (Nom)	50000 h
Switching Cycle	50000X
B50L70	50000 h

Light Technical	
Color Code	850 [CCT of 5000K]
Luminous Flux (Nom)	1150 lm
Luminous Flux (Rated) (Nom)	1150 lm
Correlated Color Temperature (Nom)	5000 K
Color Consistency	<6
Color Rendering Index (Nom)	82
LLMF At End Of Nominal Lifetime (Nom)	70 %

Operating and Electrical	
Input Frequency	20000-120000 Hz
Power (Rated) (Nom)	7 W
Lamp Current (Max)	240 mA
Lamp Current (Min)	80 mA

Starting Time (Nom)	0.5 s
Warm Up Time to 60% Light (Nom)	0.1 s
Power Factor (Nom)	0.9
Voltage (Nom)	120-277, 347 V

Temperature	
T-Ambient (Max)	45 °C
T-Ambient (Min)	-20 °C
T-Storage (Max)	65 °C
T-Storage (Min)	-40 °C
T-Case Maximum (Nom)	50 °C

Controls and Dimming	
Dimmable	No

Mechanical and Housing	
Product Length	600 mm

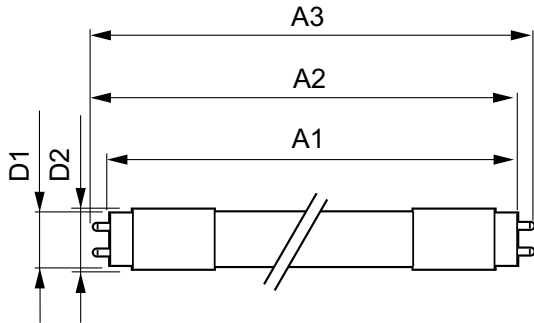
Approval and Application	
Energy Saving Product	Yes

MasterClass LEDtube InstantFit T8

Approval Marks	UL certificate RoHS compliance DLC compliance
Product Data	
Order product name	7T8 LED/24-5000 IF 10/1
EAN/UPC - Product	046677472306
Order code	929001311104

Numerator - Quantity Per Pack	1
Numerator - Packs per outer box	10
Material Nr. (12NC)	929001311104
Net Weight (Piece)	0.090 kg

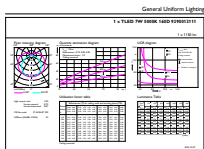
Dimensional drawing



TLED 2ft 600mm 6-17W 1050lm 5000K G13 ND

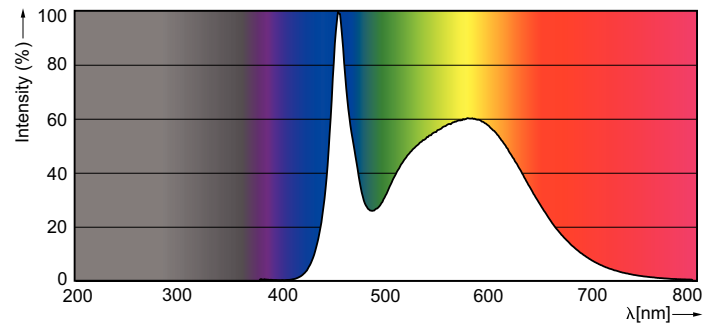
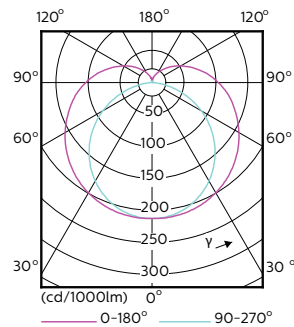
Product	D1	D2	A1	A2	A3
7T8 LED/24-5000 IF 10/1	25.7 mm	26.3 mm	588.6 mm	595.7 mm	602.8 mm

Photometric data



General Uniform Lighting
1 x TLED 2ft 600mm 6-17W 1050lm 5000K G13 ND
Page 10

LEDtube 600mm 7W G13 850 1150lm



LEDtube 1200mm 17 W /850

MasterClass LEDtube InstantFit T8

Lifetime

