

MasterClass LEDtube InstantFit T8

9T8 LED/36-3500 IF 10/1

The Masterclass LED Type A - Ballast Driven (Plug and Play) InstantFit TLED is a great LED solution suitable for replacing T8 fluorescent lamps, using an existing ballast. Specific lamps can also be used on Philips Xitanium driver for Type C applications.

Product data

General Information	
Cap-Base	G13 [Medium Bi-Pin Fluorescent]
Nominal Lifetime (Nom)	50000 h
Switching Cycle	50000X
B50L70	50000 h

Light Technical	
Color Code	835 [CCT of 3500K]
Luminous Flux (Nom)	1100 lm
Luminous Flux (Rated) (Nom)	1100 lm
Correlated Color Temperature (Nom)	3500 K
Color Consistency	<6
Color Rendering Index (Nom)	82
LLMF At End Of Nominal Lifetime (Nom)	70 %

Operating and Electrical	
Input Frequency	20000-120000 Hz
Power (Rated) (Nom)	9 W
Lamp Current (Max)	180 mA
Lamp Current (Min)	60 mA

Starting Time (Nom)	0.5 s
Warm Up Time to 60% Light (Nom)	0.1 s
Power Factor (Nom)	0.9
Voltage (Nom)	120-277, 347 V

Temperature	
T-Ambient (Max)	45 °C
T-Ambient (Min)	-20 °C
T-Storage (Max)	65 °C
T-Storage (Min)	-40 °C
T-Case Maximum (Nom)	50 °C

Controls and Dimming	
Dimmable	No

Mechanical and Housing	
Product Length	900 mm

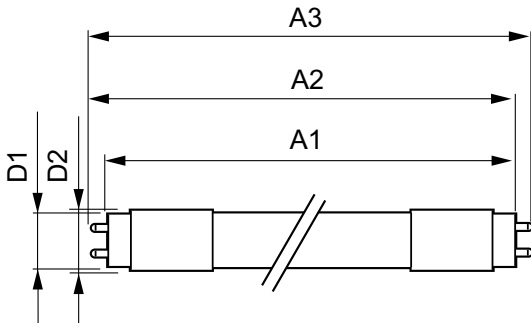
Approval and Application	
Energy Efficiency Label (EEL)	Not applicable

MasterClass LEDtube InstantFit T8

Energy Saving Product	Yes
Approval Marks	UL certificate RoHS compliance
Product Data	
Order product name	9T8 LED/36-3500 IF 10/1
EAN/UPC - Product	046677472320
Order code	929001311404

Numerator - Quantity Per Pack	1
Numerator - Packs per outer box	10
Material Nr. (12NC)	929001311404
Net Weight (Piece)	0.170 kg

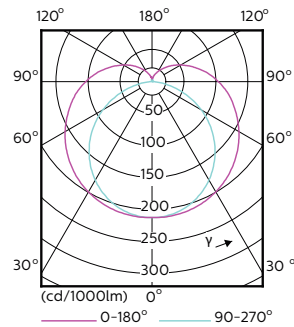
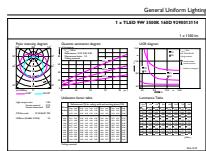
Dimensional drawing



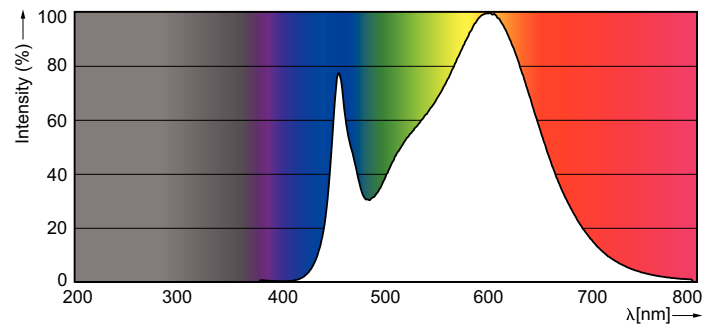
TLED 3ft 900mm 10.5-25W 1100lm 3500K ND

Product	D1	D2	A1	A2	A3
9T8 LED/36-3500 IF 10/1	25.7 mm	26.3 mm	893.4 mm	900.5 mm	907.6 mm

Photometric data



LEDtube 900mm 9W G13 835 1100lm



LED InstantFit PL-C/T 100mm 8.5 W /835

MasterClass LEDtube InstantFit T8

Lifetime

