



MASTER LEDtube Universal T8

Master LEDtube Universal 1200mm UO 16W865 T8

The new Philips MASTER LEDtube Universal T8 brings ease and simplicity to your lighting project. That's because you do not need to match the driver technology anymore: a unique design enables the Philips MASTER LEDtube Universal T8 to directly fit in luminaires operating on either electromagnetic ballasts or HF electronic ballasts or mains power connection. It is so simple to operate and you no longer need to stock two types of tubes! Perfectly safe, reliable & easy to install Philips MASTER LEDtube Universal T8 is the ideal alternative to standard fluorescent tubes to maximize value over lifetime with high energy saving and lower maintenance costs.

Product data

| General Information | |
|------------------------|----------------------------------|
| Cap-Base | G13 [Medium Bi-Pin Fluorescent] |
| Main Application | Industrial |
| Nominal Lifetime (Nom) | 60000 h |
| Switching Cycle | 50000X |
| B50L70 | 60000 h |

| Light Technical | |
|---------------------------------------|---------------------|
| Color Code | 865 [CCT of 6500K] |
| Luminous Flux (Nom) | 2500 lm |
| Luminous Flux (Rated) (Nom) | 2500 lm |
| Correlated Color Temperature (Nom) | 6500 K |
| Color Consistency | <6 |
| Color Rendering Index (Nom) | 83 |
| LLMF At End Of Nominal Lifetime (Nom) | 70 % |

| Operating and Electrical | |
|---------------------------------|-------------|
| Input Frequency | 50 to 60 Hz |
| Power (Rated) (Nom) | 16 W |
| Lamp Current (Nom) | 75 mA |
| Starting Time (Nom) | 0.5 s |
| Warm Up Time to 60% Light (Nom) | 0.5 s |
| Power Factor (Nom) | 0.9 |
| Voltage (Nom) | 220-240 V |

| Temperature | |
|----------------------|--------|
| T-Ambient (Max) | 45 °C |
| T-Ambient (Min) | -20 °C |
| T-Storage (Max) | 65 °C |
| T-Storage (Min) | -40 °C |
| T-Case Maximum (Nom) | 45 °C |

MASTER LEDtube Universal T8

Controls and Dimming

| | |
|----------|----|
| Dimmable | No |
|----------|----|

Mechanical and Housing

| | |
|----------------|---------|
| Product Length | 1200 mm |
|----------------|---------|

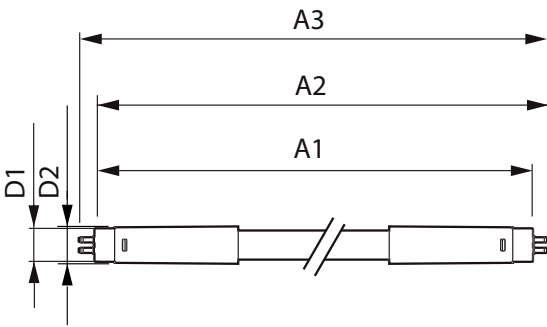
Approval and Application

| | |
|-------------------------------|------------------------------------------------------|
| Energy Efficiency Label (EEL) | A++ |
| Energy Saving Product | Yes |
| Approval Marks | RoHS compliance TUV CE marking KEMA Keur certificate |
| Energy Consumption kWh/1000 h | 16 kWh |

Product Data

| | |
|---------------------------------|----------------------------------------------|
| Full product code | 871869670539100 |
| Order product name | Master LEDtube Universal 1200mm UO 16W865 T8 |
| EAN/UPC - Product | 8718696705391 |
| Order code | 929001336202 |
| Numerator - Quantity Per Pack | 1 |
| Numerator - Packs per outer box | 10 |
| Material Nr. (12NC) | 929001336202 |
| Net Weight (Piece) | 0.270 kg |

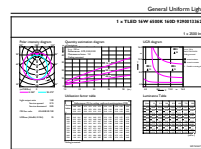
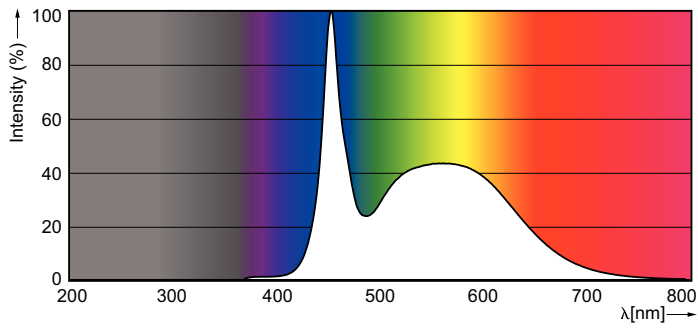
Dimensional drawing



TLED 16.5W-36W 2500lm 160D 6500K ND

| Product | D1 | D2 | A1 | A2 | A3 |
|----------------------------------------------|---------|-------|-----------|-----------|-----------|
| Master LEDtube Universal 1200mm UO 16W865 T8 | 25.7 mm | 28 mm | 1199.4 mm | 1206.5 mm | 1213.6 mm |

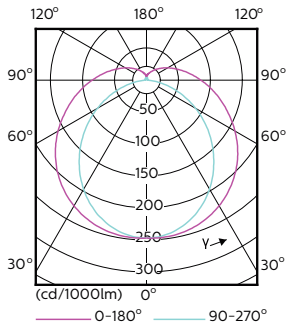
Photometric data



LEDtube 1200mm 16W G13 865 2500lm

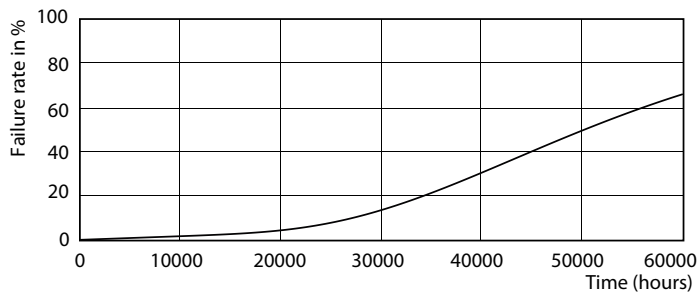
MASTER LEDtube Universal T8

Photometric data

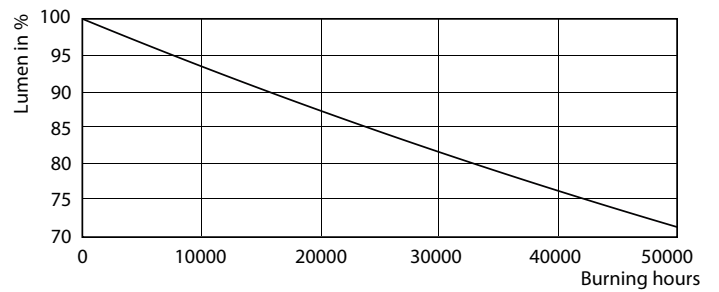


LEDtube 1200mm 16W G13

Lifetime



LEDtube 1200mm 16W G13



LEDtube 1200mm 16W G13

