



# MASTER LEDtube InstantFit HF T5

## Master LEDtube HF 1200mm HO 26W 840 T5

The Philips MASTER LEDtube integrates a LED light source into a traditional fluorescent form factor. Its unique design creates a perfectly uniform visual appearance, which cannot be distinguished from traditional fluorescent. These T5 lighting tubes are the right choice for absolute performance and are designed to stand up to everyday conditions. Unparalleled savings thanks to low energy consumption and an exceptionally long lifetime make these T5 LED tubes the choice for every demanding application.

### Product data

General Information		Operating and Electrical	
Cap-Base	G5 [G5]	Line Frequency	35000-80000 Hz
Nominal lifetime	50,000 hour(s)	Input Frequency	35000-80000 Hz
Switching Cycle	50,000	Power Consumption	26 W
Lighting Technology	LED	Lamp Current (Max)	700 mA
EU RoHS compliant	Yes	Lamp Current (Min)	450 mA
<b>Light Technical</b>		Starting Time (Nom)	0.5 s
Color Code	840 [CCT of 4000K]	Warm-up time to 60% light	0.5 s
Beam Angle (Nom)	160 degree(s)	Power Factor (Fraction)	0.9
Luminous Flux	3,900 lm	Voltage (Nom)	50-60 V
Color Designation	Cool White (CW)	<b>Temperature</b>	
Correlated Color Temperature (Nom)	4000 K	Ambient temperature range	-20 °C to 45 °C
Luminous Efficacy (rated) (Nom)	150.00 lm/W	T-Case Maximum (Nom)	45 °C
Color Consistency	<6	<b>Controls and Dimming</b>	
Color rendering index (CRI)	83	Dimmable	No
LLMF At End Of Nominal Lifetime (Nom)	70 %		

# MASTER LEDtube InstantFit HF T5

## Mechanical and Housing

Bulb Material	Plastic
Product Length	1,200 mm
Bulb Shape	T5

## Approval and Application

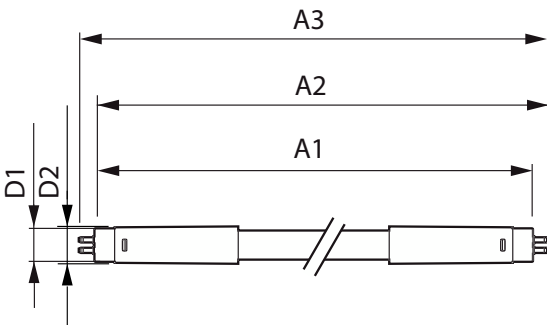
Energy Saving Product	Yes
Approval Marks	RoHS compliance TUV CE marking KEMA Keur certificate
Energy Consumption kWh/1000 h	31 kWh

## Product Data

Order product name	MAS LEDtube HF 1200mm HO 26W 840 T5
--------------------	-------------------------------------

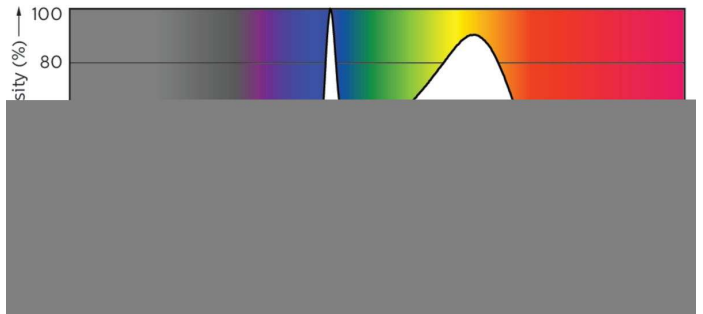
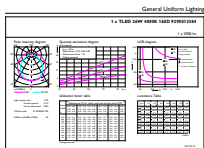
Full product name	Master LEDtube HF 1200mm HO 26W 840 T5
Full product code	871869670529200
Order code	70529200
Material Nr. (12NC)	929001338402
Numerator - Quantity Per Pack	1
EAN/UPC - Product/Case	8718696705292
Numerator - Packs per outer box	10
EAN/UPC - Case	8718696705308

## Dimensional drawing



Product	D1	D2	A1	A2	A3
MAS LEDtube HF 1200mm HO 26W 840 T5	15.2 mm	21 mm	1,147.8 mm	1,154.9 mm	1,162 mm

## Photometric data

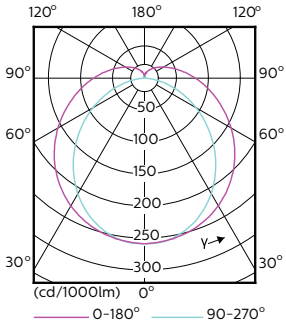


General uniform lighting - MAS LEDtube HF 1200mm HO 26W 840 T5

Spectral Power Distribution Colour - MAS LEDtube HF 1200mm HO 26W 840 T5

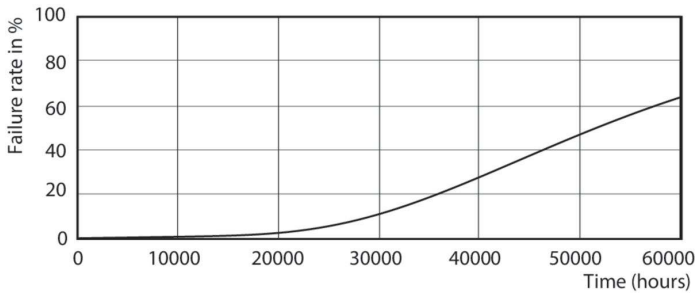
# MASTER LEDtube InstantFit HF T5

## Photometric data



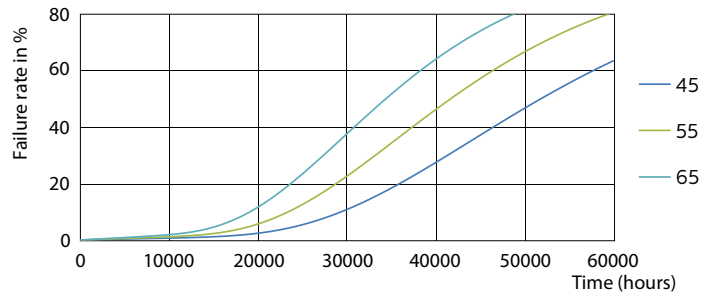
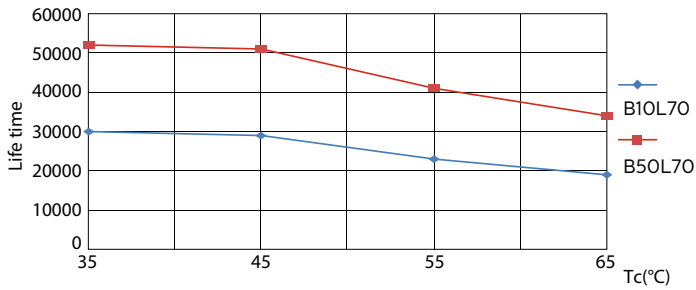
Light Distribution Diagram - MAS LEDtube HF 1200mm HO 26W 840 T5

## Lifetime



Life Expectancy Diagram - MAS LEDtube HF 1200mm HO 26W 840 T5

Lumen Maintenance Diagram - MAS LEDtube HF 1200mm HO 26W 840 T5

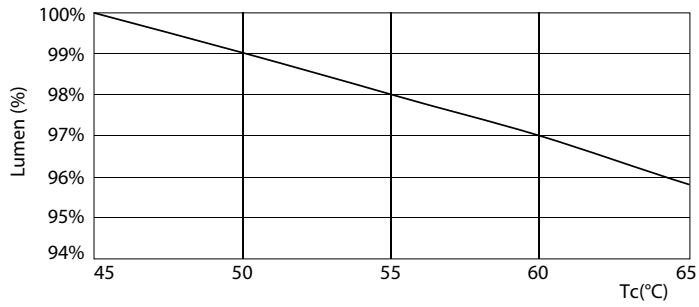


Life Expectancy Diagram - MAS LEDtube HF 1200mm HO 26W 840 T5

Life Expectancy Diagram - MAS LEDtube HF 1200mm HO 26W 840 T5

# MASTER LEDtube InstantFit HF T5

## Lifetime



Lumen Maintenance Diagram - MAS LEDtube HF 1200mm HO 26W 840 T5

