



MASTER LEDtube InstantFit HF T5

MAS LEDtube HF 1200mm HO 26W 840 T5

The Philips MASTER LEDtube integrates a LED light source into a traditional fluorescent form factor. Its unique design creates a perfectly uniform visual appearance, which cannot be distinguished from traditional fluorescent. These T5 lighting tubes are the right choice for absolute performance and are designed to stand up to everyday conditions. Unparalleled savings thanks to low energy consumption and an exceptionally long lifetime make these T5 LED tubes the choice for every demanding application.

Product data

General Information	
Cap-Base	G5 [G5]
Nominal lifetime	50,000 hour(s)
Switching Cycle	50,000
Lighting Technology	LED
EU RoHS compliant	Yes
Light Technical	
Color Code	840 [CCT of 4000K]
Beam Angle (Nom)	160 degree(s)
Luminous Flux	3,900 lm
Color Designation	Cool White (CW)
Correlated Color Temperature (Nom)	4000 K
Luminous Efficacy (rated) (Nom)	150.00 lm/W
Color Consistency	<6
Color rendering index (CRI)	83
LLMF At End Of Nominal Lifetime (Nom)	70 %

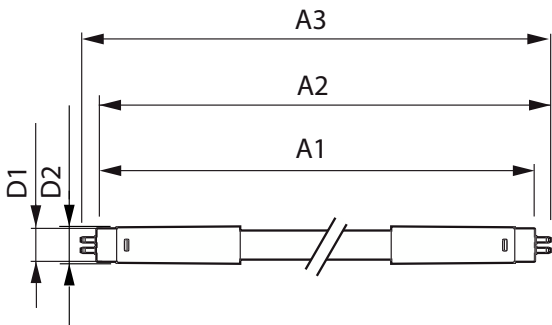
Operating and Electrical	
Line Frequency	35000-80000 Hz
Input Frequency	35000-80000 Hz
Power Consumption	26 W
Lamp Current (Max)	700 mA
Lamp Current (Min)	450 mA
Starting Time (Nom)	0.5 s
Warm-up time to 60% light	0.5 s
Power Factor (Fraction)	0.9
Voltage (Nom)	50-60 V
Temperature	
Ambient temperature range	-20 °C to 45 °C
T-Case Maximum (Nom)	45 °C
Controls and Dimming	
Dimmable	No

MASTER LEDtube InstantFit HF T5

Mechanical and Housing	
Bulb Material	Plastic
Product Length	1,200 mm
Bulb Shape	T5
Approval and Application	
Energy Saving Product	Yes
Approval Marks	RoHS compliance TUV CE marking KEMA Keur certificate
Energy Consumption kWh/1000 h	31 kWh
Product Data	
Order product name	MAS LEDtube HF 1200mm HO 26W 840 T5

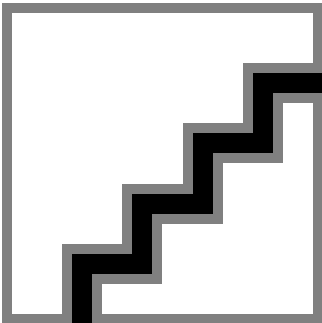
Full product name	MAS LEDtube HF 1200mm HO 26W 840 T5
Full product code	871869670529200
Order code	929001338402
Material Nr. (12NC)	929001338402
Numerator - Quantity Per Pack	1
EAN/UPC - Product/Case	8718696705292
Numerator - Packs per outer box	10
EAN/UPC - Case	8718696705308

Dimensional drawing

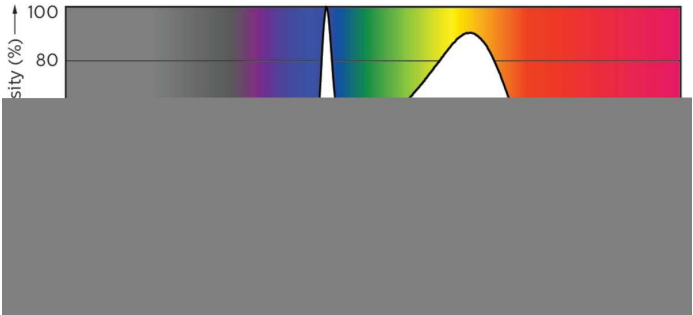


Product	D1	D2	A1	A2	A3
MAS LEDtube HF 1200mm HO 26W 840 T5	15.2 mm	21 mm	1,147.8 mm	1,154.9 mm	1,162 mm

Photometric data



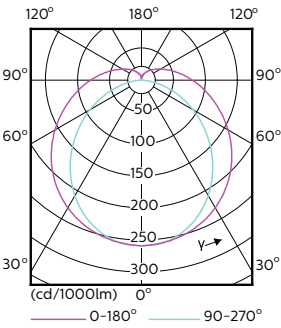
General uniform lighting - MAS LEDtube HF 1200mm HO 26W 840 T5



Spectral Power Distribution Colour - MAS LEDtube HF 1200mm HO 26W 840 T5

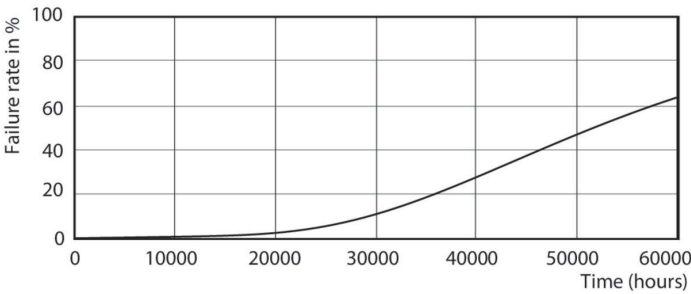
MASTER LEDtube InstantFit HF T5

Photometric data

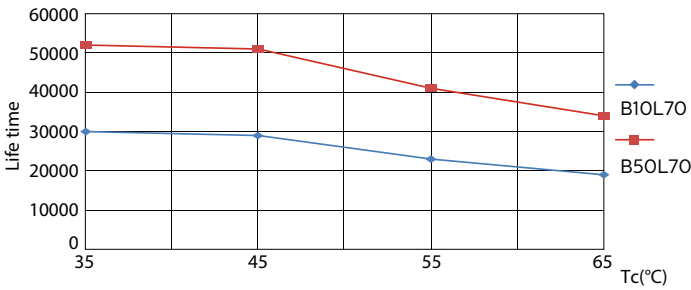


Light Distribution Diagram - MAS LEDtube HF 1200mm HO 26W 840 T5

Lifetime



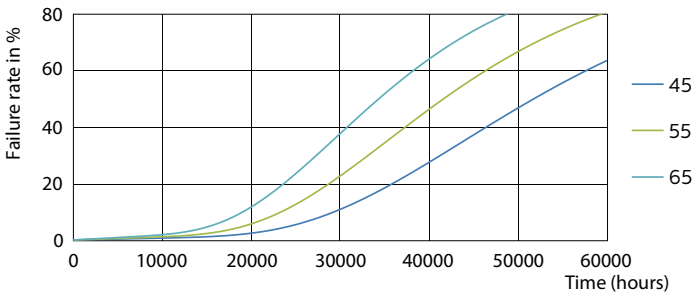
Life Expectancy Diagram - MAS LEDtube HF 1200mm HO 26W 840 T5



Life Expectancy Diagram - MAS LEDtube HF 1200mm HO 26W 840 T5



Lumen Maintenance Diagram - MAS LEDtube HF 1200mm HO 26W 840 T5



Life Expectancy Diagram - MAS LEDtube HF 1200mm HO 26W 840 T5

MASTER LEDtube InstantFit HF T5

Lifetime

Lumen Maintenance Diagram - MAS LEDtube HF 1200mm HO 26W 840 T5

