



# MASTER LEDtube InstantFit HF T5

## MAS LEDtube HF 1200mm HO 26W 865 T5

Philips MASTER LEDtube InstantFit T5 integrates a LED light source into a traditional fluorescent form factor. Its unique design creates a perfectly uniform visual appearance which cannot be distinguished from traditional fluorescents. The Philips MASTER LEDtube InstantFit T5 is the ideal solution for customers who have higher light output requirements and want to maximise value over the lifetime. The full energy savings & longer lifetime result in attractive payback times and TCO benefits.

### Product data

#### General Information

Cap base	G5 [ G5]
Nominal lifetime (nom.)	50000 h
Switching cycle	50000X
B50L70	50000 h

#### Light Technical

Colour Code	865 [ CCT of 6,500 K]
Beam Angle (Nom)	160 °
Lamp Luminous Flux 25°C EL (Nom)	3900 lm
Lamp Luminous Flux (Nom)	3900 lm
Rated beam angle	160 °
Colour Temperature, horizontal (Nom)	6500 K
Colour consistency	<6
Colour Rendering Index,horiz (Nom)	83
LLMF at end of nominal lifetime (nom.)	70 %

#### Operating and Electrical

Input frequency	35000-80000 Hz
-----------------	----------------

Power (Rated) (Nom)	26 W
Lamp current (max.)	700 mA
Lamp current (min.)	450 mA
Starting time (nom.)	0.5 s
Warm-up time to 60% light (nom.)	0.5 s
Voltage (Nom)	50-60 V

#### Temperature

T ambient (max.)	45 °C
T ambient (min.)	-20 °C
T storage (max.)	65 °C
T storage (min.)	-40 °C

#### Controls and Dimming

Dimmable	No
----------	----

#### Mechanical and Housing

Product length	1200 mm
----------------	---------

# MASTER LEDtube InstantFit HF T5

## Approval and Application

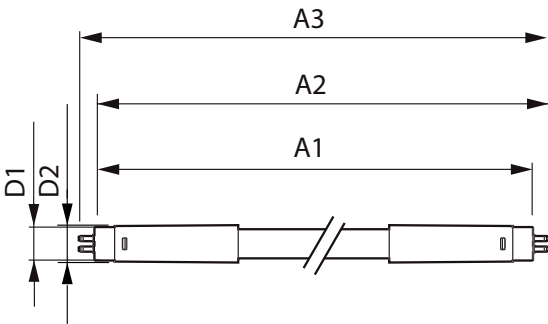
Energy efficiency label (EEL)	A++
Energy-saving product	Yes
Approval marks	RoHS compliance CE marking KEMA Keur certificate
Energy Consumption kWh/1000 h	31 kWh

## Product Data

Full product code	871869670531500
-------------------	-----------------

Order product name	MAS LEDtube HF 1200mm HO 26W 865 T5
EAN/UPC – product	8718696705315
Order code	929001338502
Numerator – quantity per pack	1
Numerator – packs per outer box	10
Material no. (12NC)	929001338502
Net weight (piece)	0.155 kg

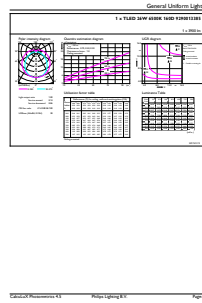
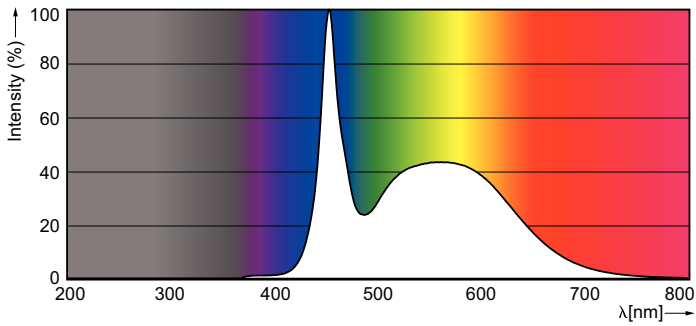
## Dimensional drawing



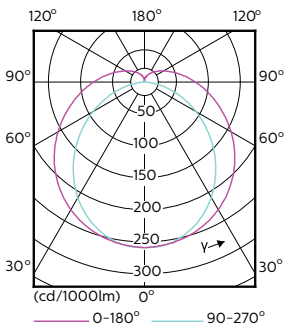
TLED 1200mm 26-49W 3900lm 6500K G5 ND

Product	D1	D2	A1	A2	A3
MAS LEDtube HF 1200mm HO 26W 865 T5	15.2 mm	21 mm	1147.8 mm	1154.9 mm	1162 mm

## Photometric data

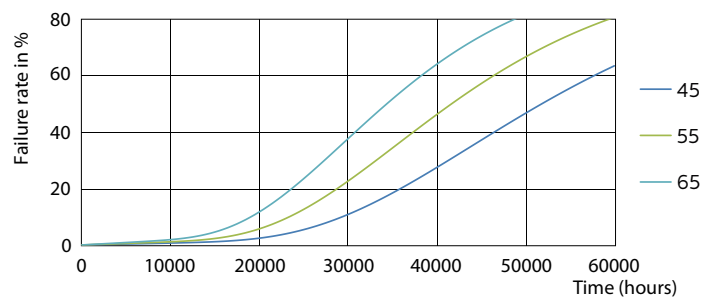
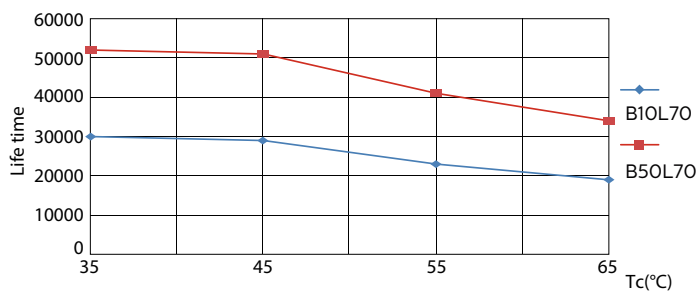
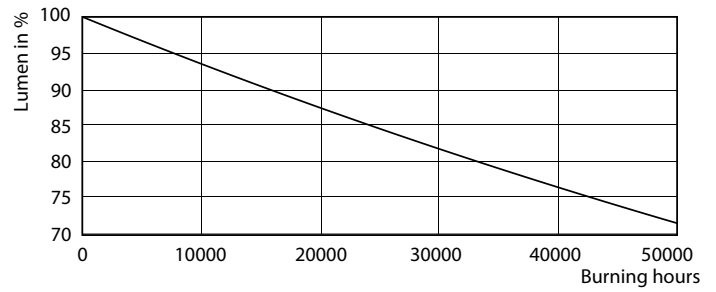
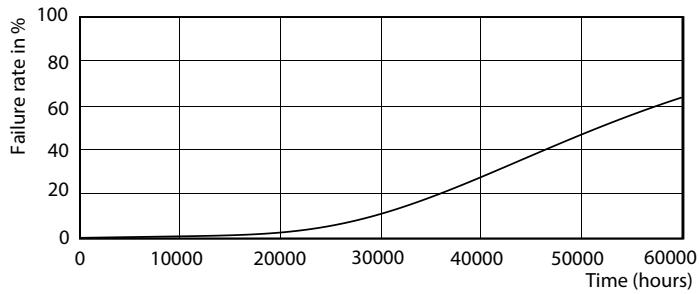


LEDtube 1200mm 26W G5 865 3900lm



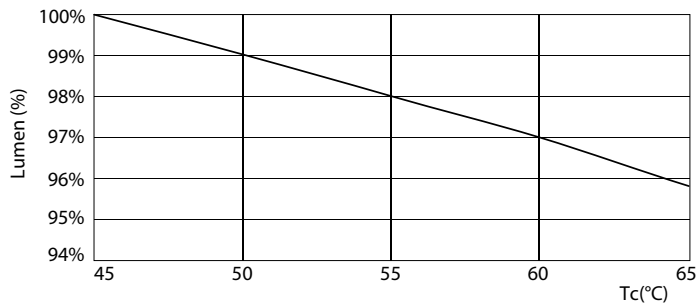
# MASTER LEDtube InstantFit HF T5

## Lifetime



LEDtube 1200mm 26W G5 3900lm

LEDtube 1200mm 26W G5 3900lm



LEDtube 1200mm 26W G5 3900lm

