



# T8

## 14T8/COR/48-840/IF21/G/DIM 10/1

Our TLEDs are available in InstantFit (Type A / Type C) or MainsFit (Ballast bypass / Type B) versions. The InstantFit lamps work on a broad variety of ballasts and LED drivers. Only InstantFit has over 15,000 lamp & ballast combinations delivering even light output, energy savings and a long lifetime. Our MainsFit products feature a double-ended design, simplifying installation while a proprietary safety circuit minimizes a shock risk. Lamp sizes range from 2-foot to 8-foot and U-bend with a variety of lumen outputs.

### Product data

General Information	
Base	G13 [ Medium Bi-Pin Fluorescent]
EU RoHS compliant	Yes
Nominal Lifetime (Nom)	50000 h
Switching Cycle	50000X
Light Technical	
Color Code	841 [ CCT of 4100K (841)]
Beam Angle (Nom)	240 °
Initial lumen (Nom)	2100 lm
Color Designation	Cool White (CW)
Correlated Color Temperature (Nom)	4000 K
Luminous Efficacy (rated) (Nom)	150.00 lm/W
Color Consistency	<6
Color Rendering Index (Nom)	82
LLMF At End Of Nominal Lifetime (Nom)	70 %
Operating and Electrical	
Input Frequency	25000-105000 Hz
Power (Rated) (Nom)	14 W

Lamp Current (Max)	260 mA
Lamp Current (Min)	100 mA
Starting Time (Nom)	0.5 s
Warm Up Time to 60% Light (Nom)	0.5 s
UL Type	Type A - works on ballast Type C - works with dedicated LED driver Type A+C - works with both ballasts and the LED driver
Power Factor (Nom)	0.9
Voltage (Nom)	120-277, 347 V
Temperature	
T-Ambient (Max)	45 °C
T-Ambient (Min)	-20 °C
T-Storage (Max)	65 °C
T-Storage (Min)	-40 °C
T-Case Maximum (Nom)	50 °C
Controls and Dimming	
Dimmable	Yes

# T8

## Mechanical and Housing

Product Length 1200 mm

## Approval and Application

Energy Efficiency Label (EEL) Not applicable  
 Energy Saving Product Yes  
 Approbation Marks UL certificate RoHS compliance DLC compliance  
 Energy Consumption kWh/1000 h - kWh  
 Energy Certifications DLC Standard

## Product Data

Order product name 14T8/COR/48-840/IF21/G/DIM 10/1  
 EAN/UPC - Product 046677453251  
 Order code 470112  
 Numerator - Quantity Per Pack 1  
 Numerator - Packs per outer box 10  
 Material Nr. (12NC) 929001343234  
 Net Weight (Piece) 0.215 kg  
 Model Number 9290013432A

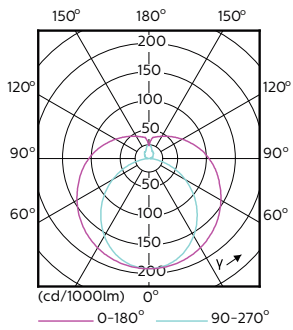
## Dimensional drawing

A3

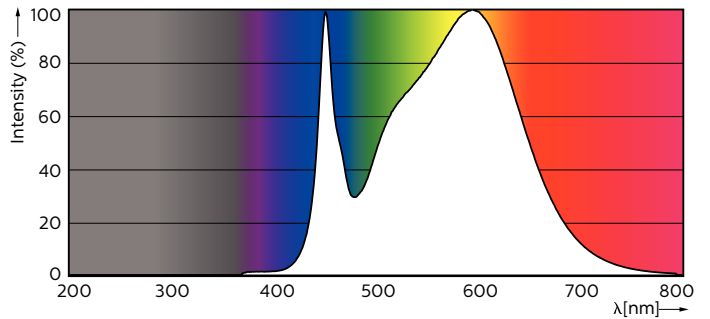
Product	D1	D2	A1	A2	A3
14T8/COR/48-840/IF21/G/DIM 10/1	25.7 mm	28 mm	1198 mm	1205 mm	1212 mm

14T8 PRO LED/48-4000 IF G 10/1

## Photometric data

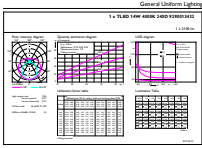


LEDtube 1200mm 17W G13 2100lm



LEDtube PRO 1200mm 14W G13 840 2100lm

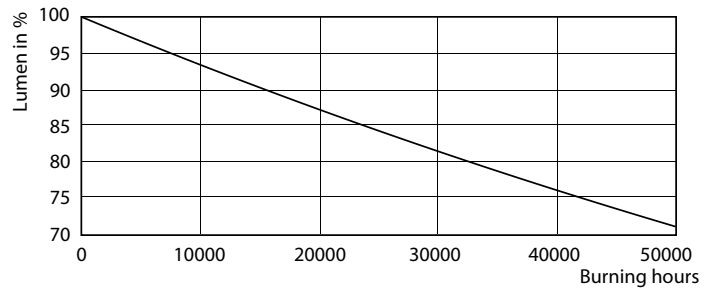
Photometric data



Product Parameters 41 Photo Lighting 8.1 Page 17

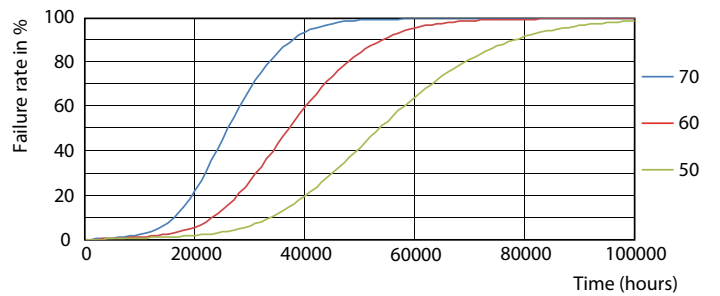
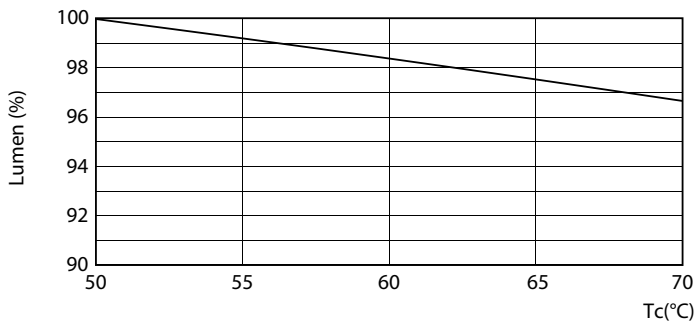
LEDtube PRO 1200mm 14W G13 840 2100lm

Lifetime



LEDtube PRO 1200mm 14W G13 2000lm

LEDtube PRO 1200mm 14W G13 2000lm

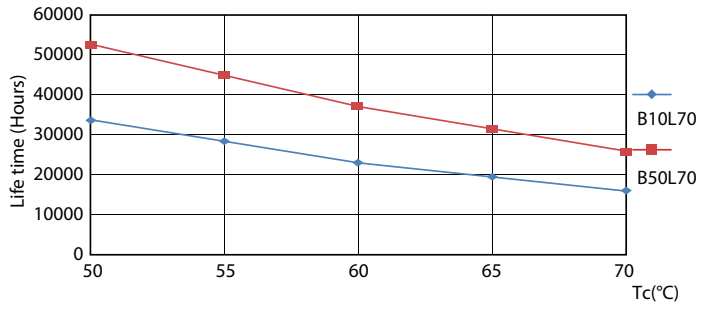


12W G13

12W G13

# T8

## Lifetime



12W G13

