



# T8

## 14T8/COR/48-840/IF21/G 10/1

Our TLEDs are available in InstantFit (Type A / Type C) or MainsFit (Ballast bypass / Type B) versions. The InstantFit lamps work on a broad variety of ballasts and LED drivers. Only InstantFit has over 15,000 lamp & ballast combinations delivering even light output, energy savings and a long lifetime. Our MainsFit products feature a double-ended design, simplifying installation while a proprietary safety circuit minimizes a shock risk. Lamp sizes range from 2-foot to 8-foot and U-bend with a variety of lumen outputs.

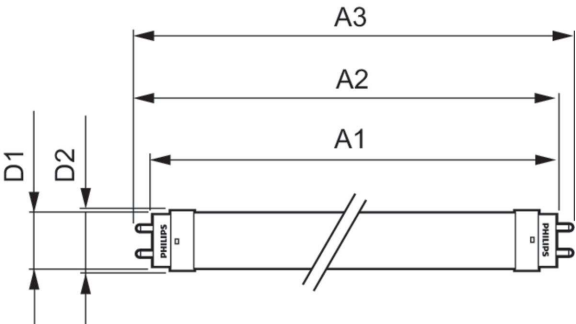
### Product data

<b>General Information</b>		<b>Input Frequency</b>	
Cap-Base	G13 [Medium Bi-Pin Fluorescent]	Power Consumption	14 W
Nominal lifetime	50,000 hour(s)	Lamp Current (Max)	260 mA
Switching Cycle	50,000	Lamp Current (Min)	100 mA
Lighting Technology	LED	Starting Time (Nom)	0.5 s
EU RoHS compliant	Yes	Warm-up time to 60% light	0.5 s
<b>Light Technical</b>		Power Factor (Fraction)	0.9
Color Code	840 [CCT of 4000K]	Voltage (Nom)	120-277, 347 V
Beam Angle (Nom)	240 degree(s)	<b>Temperature</b>	
Luminous Flux	2,100 lm	Ambient temperature range	-4 °F to 113 °F
Color Designation	Cool White (CW)	T-Case Maximum (Nom)	122 °F
Correlated Color Temperature (Nom)	4000 K	<b>Controls and Dimming</b>	
Luminous Efficacy (rated) (Nom)	150.00 lm/W	Dimmable	No
Color Consistency	<6	<b>Mechanical and Housing</b>	
Color rendering index (CRI)	82	Product Length	47-1/4 inch
LLMF At End Of Nominal Lifetime (Nom)	70 %	Bulb Shape	Tube, double-ended
<b>Operating and Electrical</b>			
Line Frequency	25000-105000 Hz		

Approval and Application	
Energy Saving Product	Yes
Approval Marks	UL certificate RoHS compliance DLC compliance
Energy Consumption kWh/1000 h	- kWh
Energy Certifications	DLC Standard
Product Data	
Order product name	14T8/COR/48-840/IF21/G 10/1

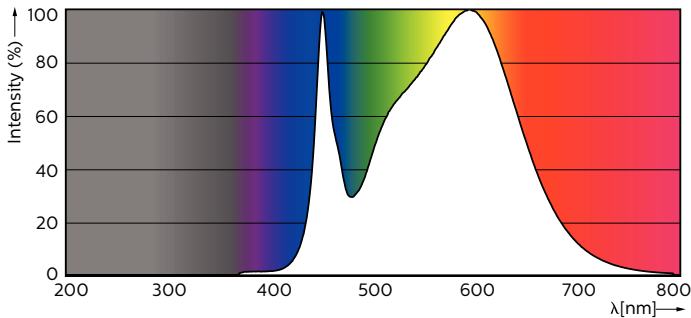
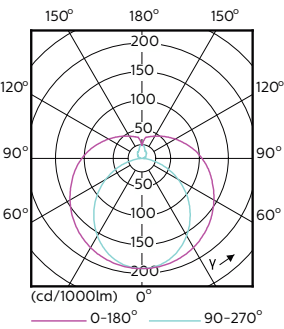
Full product name	14T8/COR/48-840/IF21/G 10/1
Order code	537803
Material Nr. (12NC)	929001343264
Numerator - Quantity Per Pack	1
EAN/UPC - Product/Case	046677537807
Numerator - Packs per outer box	10
EAN/UPC - Case	50046677537802

Dimensional drawing



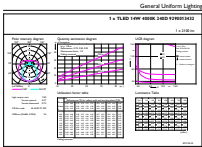
Product	D1	D2	A1	A2	A3
14T8/COR/48-840/ IF21/G 10/1	1-1/16 inch	1-1/8 inch	47-3/16 inch	47-1/2 inch	47-3/4 inch

Photometric data

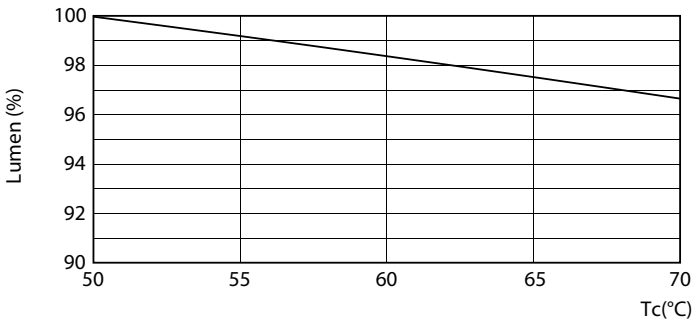
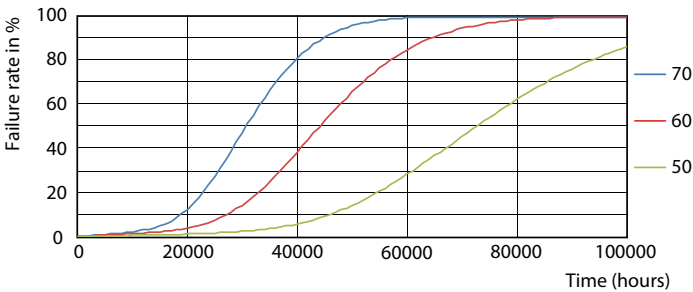


Light Distribution Diagram - 14T8/COR/48-840/IF21/G 10/1

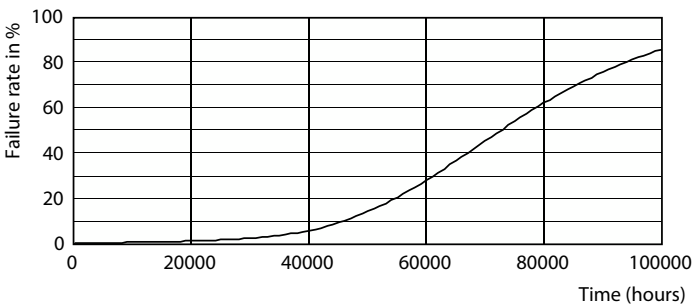
Spectral Power Distribution Colour - 14T8/COR/48-840/IF21/G 10/1



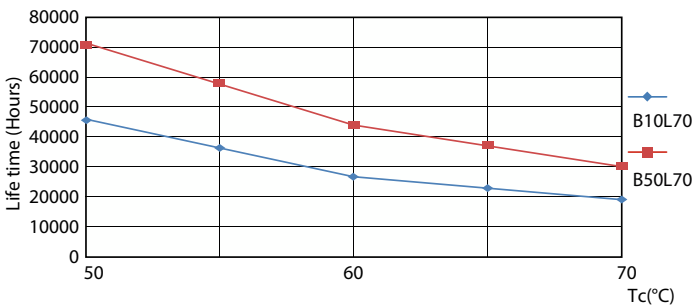
Lifetime



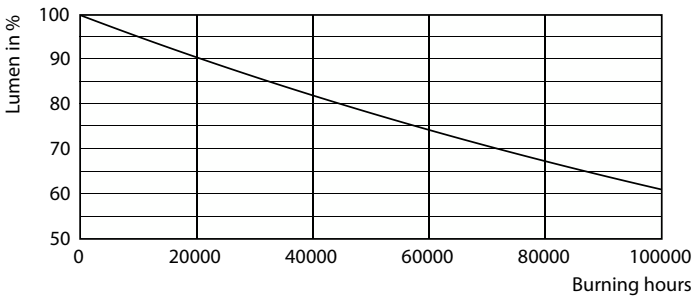
Life Expectancy Diagram - 14T8/COR/48-840/IF21/G 10/1



Lumen Maintenance Diagram - 14T8/COR/48-840/IF21/G 10/1



Life Expectancy Diagram - 14T8/COR/48-840/IF21/G 10/1



Life Expectancy Diagram - 14T8/COR/48-840/IF21/G 10/1

Lumen Maintenance Diagram - 14T8/COR/48-840/IF21/G 10/1

