

MASTER LEDtube EM/ Mains T8

MAS LEDtube 1200mm 14W 865 T8 THD

The Philips MASTER LEDtube integrates a LED light source into a traditional fluorescent form factor. Its unique design creates a perfectly uniform visual appearance which cannot be distinguished from traditional fluorescent. For those that are looking for value for money within limited budget and re-lamping efforts for better light effect and lifetime.

Product data

General Information	
Cap-Base	G13 [Medium Bi-Pin Fluorescent]
Nominal Lifetime (Nom)	50000 h
Switching Cycle	50000X
B50L70	50000 h
Light Technical	
Color Code	865 [CCT of 6500K]
Luminous Flux (Nom)	2100 lm
Luminous Flux (Rated) (Nom)	2100 lm
Correlated Color Temperature (Nom)	6500 K
Color Consistency	<6
Color Rendering Index (Nom)	83
LLMF At End Of Nominal Lifetime (Nom)	70 %
Operating and Electrical	
Input Frequency	50 to 60 Hz
Power (Rated) (Nom)	14 W
Lamp Current (Max)	73 mA
Lamp Current (Min)	54 mA

Starting Time (Nom)	0.5 s
Warm Up Time to 60% Light (Nom)	0.5 s
Power Factor (Nom)	0.9
Voltage (Nom)	220-240 V
Temperature	
T-Ambient (Max)	45 °C
T-Ambient (Min)	-20 °C
T-Storage (Max)	65 °C
T-Storage (Min)	-40 °C
T-Case Maximum (Nom)	55 °C
Controls and Dimming	
Dimmable	No
Mechanical and Housing	
Product Length	1200 mm
Approval and Application	
Energy Efficiency Label (EEL)	A++

MASTER LEDtube EM/Mains T8

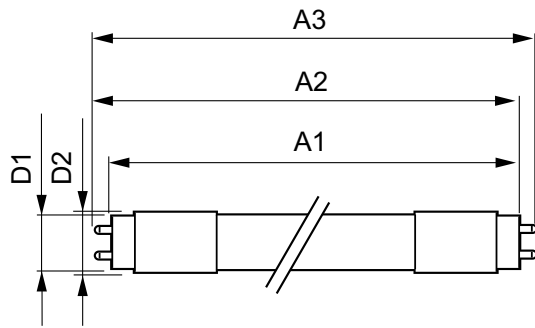
Energy Saving Product	Yes
Approval Marks	CE marking RoHS compliance KEMA Keur certificate
Energy Consumption kWh/1000 h	14 kWh
Product Data	
Full product code	871869672859800
Order product name	MAS LEDtube 1200mm 14W 865 T8 THD

EAN/UPC - Product	8718696728598
Order code	929001375308
Numerator - Quantity Per Pack	1
Numerator - Packs per outer box	10
Material Nr. (12NC)	929001375308
Net Weight (Piece)	0.215 kg

Warnings and Safety

- NOTES: The overall energy efficiency and light distribution of any installation that uses these lamps are determined by the design of the installation.

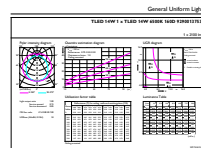
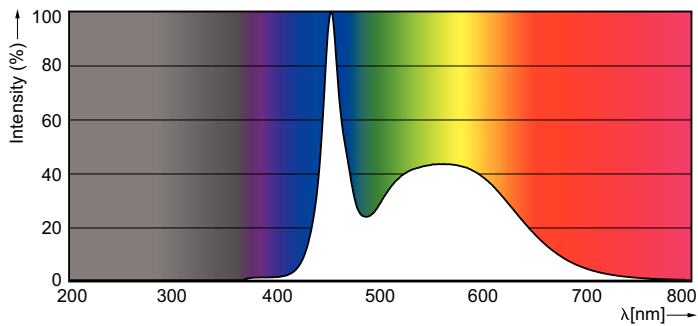
Dimensional drawing



TLED 4ft 220-240V14W-36W 6500K G13 ND

Product	D1	D2	A1	A2	A3
MAS LEDtube 1200mm 14W 865 T8 THD	25.8 mm	28 mm	1198.2 mm	1205.3 mm	1212.4 mm

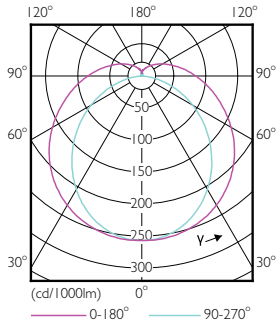
Photometric data



MAS LEDtube EM 14W G13 765 T8 THD

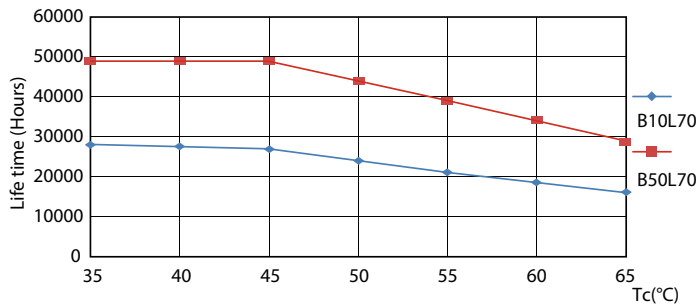
MASTER LEDtube EM/Mains T8

Photometric data

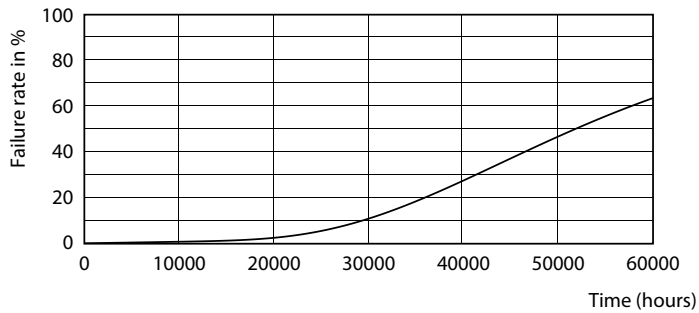


MAS LEDtube EM 14W G13 740 T8 THD

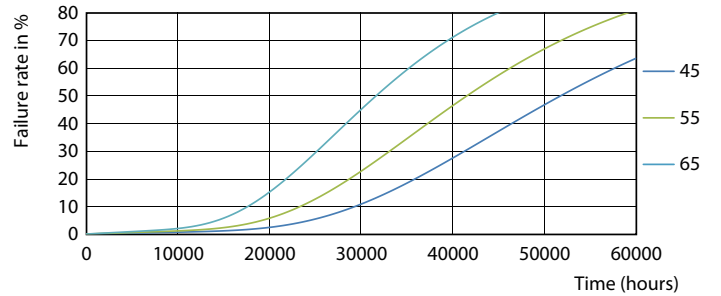
Lifetime



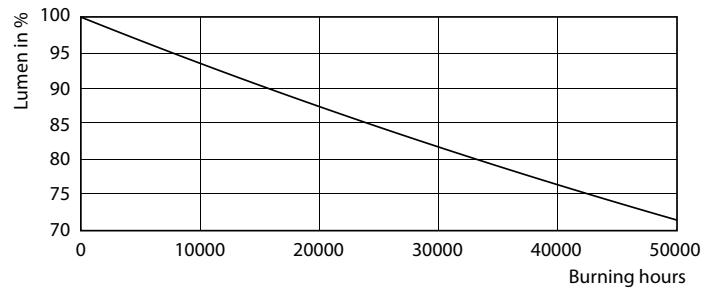
MAS LEDtube EM 14W G13 740-765 T8 THD



MAS LEDtube EM 14W G13 740-765 T8 THD



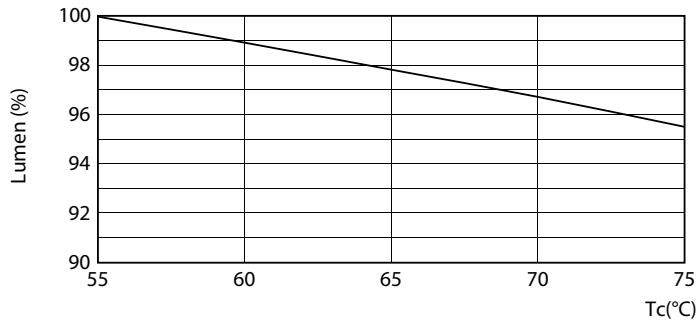
MAS LEDtube EM 14W G13 740-765 T8 THD



MAS LEDtube EM 14W G13 740-765 T8 THD

MASTER LEDtube EM/Mains T8

Lifetime



MAS LEDtube EM 14W G13 740-765 T8 THD

