



MASTER LEDtube EM/ Mains



MASTER LEDtube 1050mm 16W 830 T8

The Philips MASTER LEDtube integrates a LED light source into a traditional fluorescent form factor. Its unique design creates a perfectly uniform visual appearance which cannot be distinguished from traditional fluorescent. This product is the ideal solution for up lighting in general lighting applications.

Warnings and Safety

• -

Product data

General Information	
Cap base	G13 ROT
Nominal lifetime	75,000 h
Switching Cycle	200,000
Lighting Technology	LED
Flux measurement reference	Sphere
EU RoHS compliant	Yes

Light Technical	
Colour Code	830 [CCT of 3000K]
Beam angle (nom.)	160 degree(s)
Luminous Flux	2,300 lm
Colour designation	White (WH)
Correlated Colour Temperature	3000 K
Luminous efficacy (rated) (nom.)	143 lm/W
Colour consistency	<6
Colour rendering index (CRI)	80
LLMF at end of nominal lifetime (nom.)	70 %

Flickering value (PstLM)	0.5
Stroboscopic effect	0.2
Photobiological safety according to EN 62471	RG0

Operating and Electrical	
Line Frequency	50 to 60 Hz
Input frequency	50 to 60 Hz
Power Consumption	16 W
Lamp current (max.)	83 mA
Lamp current (min.)	68 mA
Starting time (nom.)	0.5 s
Warm-up time to 60% light	0.5 s
Power Factor (Fraction)	0.9
Voltage (nom.)	220-240 V
LED alternative to fluorescent lamp power	38 W
Inrush current at mains	8.4
Max. lamp no. on MCB B type 10A — Mains	90

MASTER LEDtube EM/Mains

Max. lamp no. on MCB B type 10A — EM ballast without Comp. Cap.	90
Max. lamp no. on MCB B type 10A — EM ballast with Comp. Cap.	15
Max. lamp no. on MCB B type 16A — Mains	140
Max. lamp no. on MCB B type 16A — EM ballast without Comp. Cap.	150
Max. lamp no. on MCB B type 16A — EM ballast with Comp. Cap.	25
Ballast Compatibility	EM/Mains

Temperature

Ambient temperature range	-20°C to 45°C
T-Case maximum (nom.)	55 °C

Controls and Dimming

Dimmable	No
----------	----

Mechanical and Housing

Lamp Finish	Frosted
Bulb material	Plastic
Product length	1,100 mm
Bulb shape	T8

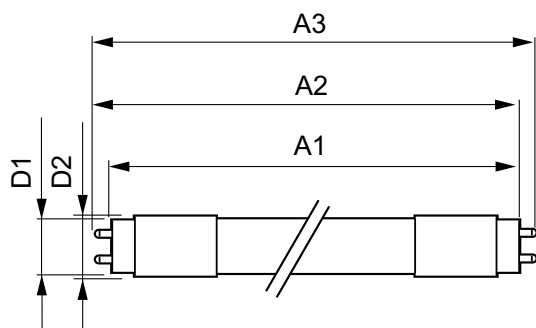
Approval and Application

Energy Efficiency Class	D
Energy-saving product	Yes
Approval marks	RoHS compliance TUV CE marking KEMA Keur certificate
Energy consumption kWh/1,000 hours	16 kWh
EPREL registration number	1206965

Product Data

Order product name	MAS LEDtube 1050mm 16W 830 T8
Full product name	MASTER LEDtube 1050mm 16W 830 T8
Full EOC	871869672855000
Order code	72855000
Material no. (12 NC)	929001375602
SAP numerator – quantity per pack	1
EAN/UPC – Product/Case	8718696728550
Numerator – packs per outer box	10
EAN/UPC - Case	8718696728567

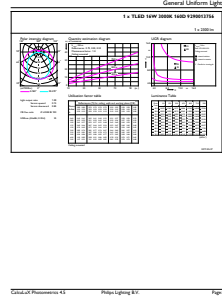
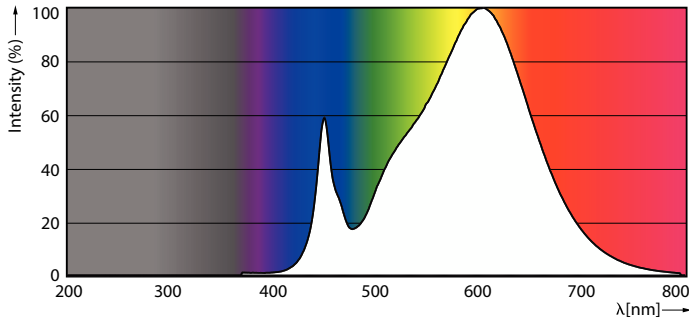
Dimensional drawing



Product	D1	D2	A1	A2	A3
MAS LEDtube 1050mm 16W 830 T8	25.8 mm	28 mm	1,045.8 mm	1,052.9 mm	1,060 mm

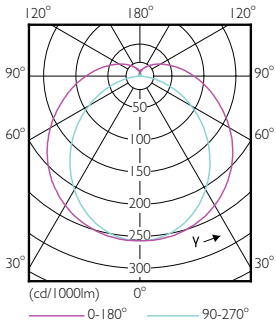
MASTER LEDtube EM/Mains

Photometric data



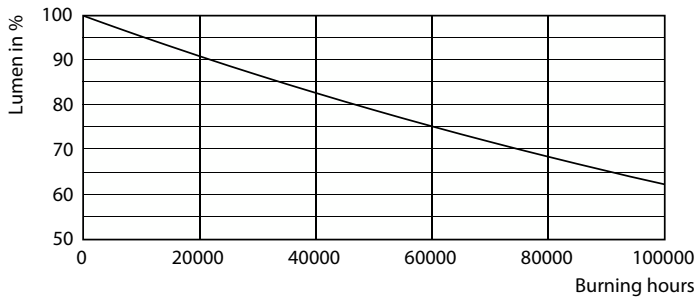
Spectral Power Distribution Colour - MAS LEDtube 1050mm 16W 830 T8

General uniform lighting - MAS LEDtube 1050mm 16W 830 T8

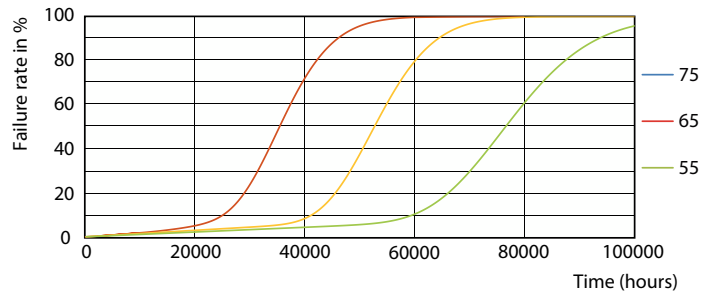


Light Distribution Diagram - MAS LEDtube 1050mm 16W 830 T8

Lifetime



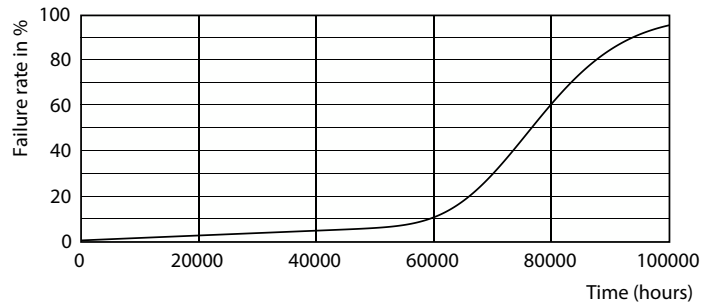
Lumen Maintenance Diagram - MAS LEDtube 1050mm 16W 830 T8



Life Expectancy Diagram - MAS LEDtube 1050mm 16W 830 T8

MASTER LEDtube EM/Mains

Lifetime



Lumen Maintenance Diagram - MAS LEDtube 1050mm 16W 830 T8

Life Expectancy Diagram - MAS LEDtube 1050mm 16W 830 T8



Life Expectancy Diagram - MAS LEDtube 1050mm 16W 830 T8

