



# MASTER LEDtube EM/ Mains T8

## MAS LEDtube 1050mm 16W 830 T8

The Philips MASTER LEDtube integrates a LED light source into a traditional fluorescent form factor. Its unique design creates a perfectly uniform visual appearance which cannot be distinguished from traditional fluorescent. For those that are looking for value for money within limited budget and re-lamping efforts for better light effect and lifetime.

### Product data

General Information	
Cap-Base	G13 [ Medium Bi-Pin Fluorescent]
Nominal Lifetime (Nom)	50000 h
Switching Cycle	200000X
B50L70	50000 h

Light Technical	
Color Code	830 [ CCT of 3000K]
Luminous Flux (Nom)	2300 lm
Luminous Flux (Rated) (Nom)	2300 lm
Correlated Color Temperature (Nom)	3000 K
Color Consistency	<6
Color Rendering Index (Nom)	80
LLMF At End Of Nominal Lifetime (Nom)	70 %

Operating and Electrical	
Input Frequency	50 to 60 Hz
Power (Rated) (Nom)	16 W
Lamp Current (Max)	83 mA
Lamp Current (Min)	61 mA

Starting Time (Nom)	0.5 s
Warm Up Time to 60% Light (Nom)	0.5 s
Power Factor (Nom)	0.9
Voltage (Nom)	220-240 V

Temperature	
T-Ambient (Max)	45 °C
T-Ambient (Min)	-20 °C
T-Storage (Max)	65 °C
T-Storage (Min)	-40 °C
T-Case Maximum (Nom)	55 °C

Controls and Dimming	
Dimmable	No

Mechanical and Housing	
Product Length	1050 mm

Approval and Application	
Energy Efficiency Label (EEL)	A++

# MASTER LEDtube EM/Mains T8

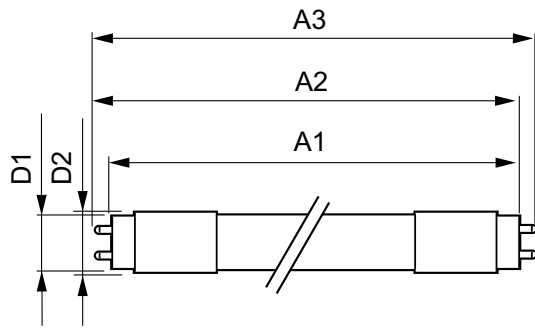
Energy Saving Product	Yes
Approval Marks	CE marking RoHS compliance KEMA Keur certificate
Energy Consumption kWh/1000 h	16 kWh
<b>Product Data</b>	
Full product code	871869672855000
Order product name	MAS LEDtube 1050mm 16W 830 T8

EAN/UPC - Product	8718696728550
Order code	929001375602
Numerator - Quantity Per Pack	1
Numerator - Packs per outer box	10
Material Nr. (12NC)	929001375602
Net Weight (Piece)	0.212 kg

## Warnings and Safety

- NOTES: The overall energy efficiency and light distribution of any installation that uses these lamps are determined by the design of the installation.

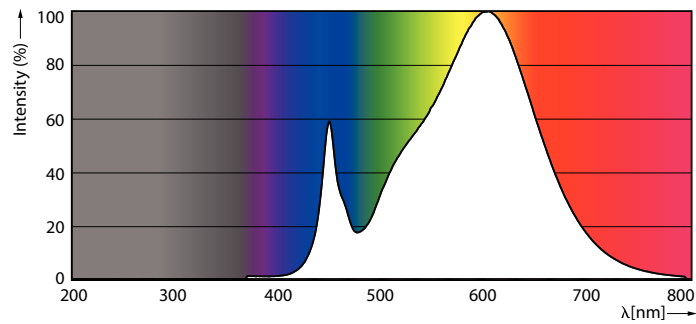
## Dimensional drawing



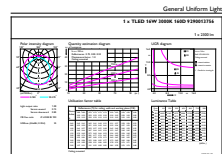
TLED 220-240V 16-38W 2300lm 3000K G13 ND

Product	D1	D2	A1	A2	A3
MAS LEDtube 1050mm 16W 830 T8	25.8 mm	28 mm	1045.8 mm	1052.9 mm	1060 mm

## Photometric data



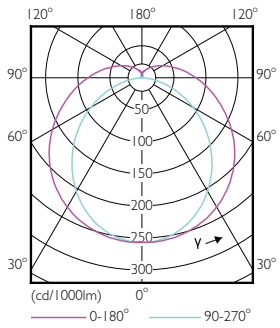
LEDtube 600mm 8W G5 830 1000lm



LEDtube MAS 16W G13 830 ND

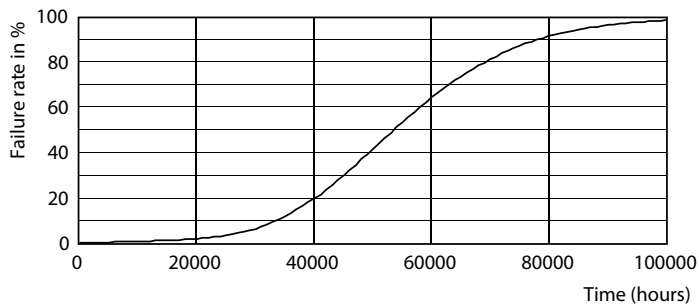
# MASTER LEDtube EM/Mains T8

## Photometric data

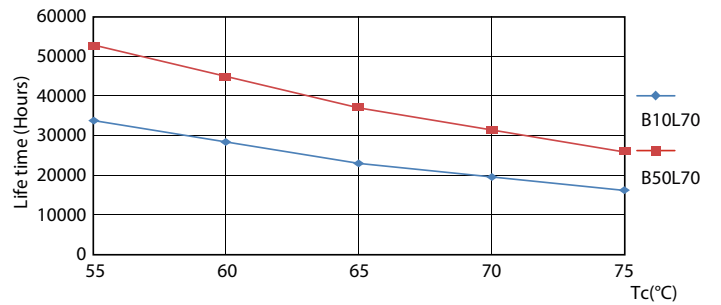


LEDtube MAS 16W G13 830 ND

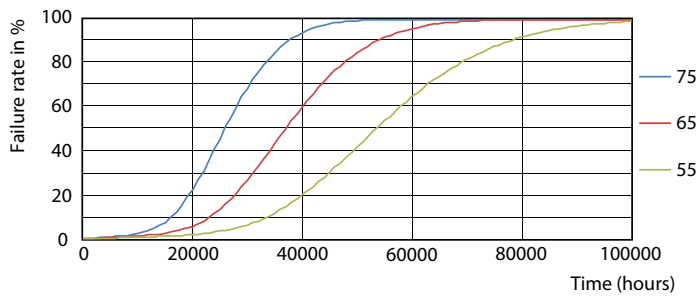
## Lifetime



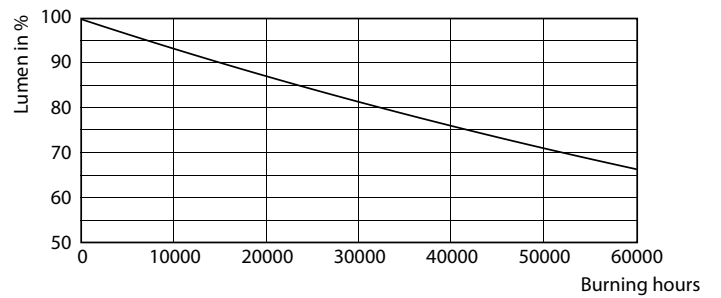
LEDtube MAS 16W G13 830 ND



LEDtube MAS 16W G13 830 ND



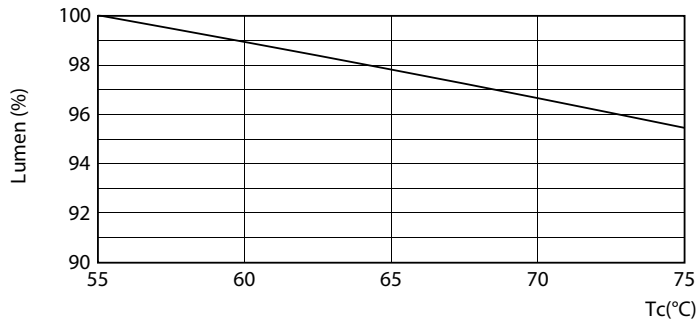
LEDtube MAS 16W G13 830 ND



LEDtube MAS 16W G13 830 ND

# MASTER LEDtube EM/Mains T8

## Lifetime



LEDtube MAS 16W G13 830 ND

