



MASTER LEDtube EM/ Mains

MASTER LEDtube 1200mm UE 14.5W 840 T8

The Philips MASTER LEDtube integrates a LED light source into a traditional fluorescent form factor. Its unique design creates a perfectly uniform visual appearance which cannot be distinguished from traditional fluorescent. This product is the ideal solution for up lighting in general lighting applications.

Warnings and Safety

• -

Product data

General Information		Operating and Electrical	
Cap base	G13 ROT (Rotating) [Medium Bi-Pin Fluorescent]	Line Frequency	50 to 60 Hz
Nominal lifetime	70,000 h	Input frequency	50 to 60 Hz
Switching Cycle	200,000	Power Consumption	14.5 W
Lighting Technology	LED	Lamp current (max.)	74 mA
EU RoHS compliant	Yes	Lamp current (min.)	56 mA
Light Technical		Starting time (nom.)	0.5 s
Colour Code	840 [CCT of 4000K]	Warm-up time to 60% light	0.5 s
Beam angle (nom.)	160 degree(s)	Power Factor (Fraction)	0.9
Luminous Flux	2,500 lm	Voltage (nom.)	220-240 V
Colour designation	Cool White (CW)	Temperature	
Correlated Colour Temperature	4000 K	Ambient temperature range	-20°C to 35°C
Luminous efficacy (rated) (nom.)	172.00 lm/W	T-Case maximum (nom.)	55 °C
Colour consistency	<6	Controls and Dimming	
Colour rendering index (CRI)	83	Dimmable	No
LLMF at end of nominal lifetime (nom.)	70 %		

MASTER LEDtube EM/Mains

Mechanical and Housing

Bulb material	Plastic
Product length	1,200 mm

Approval and Application

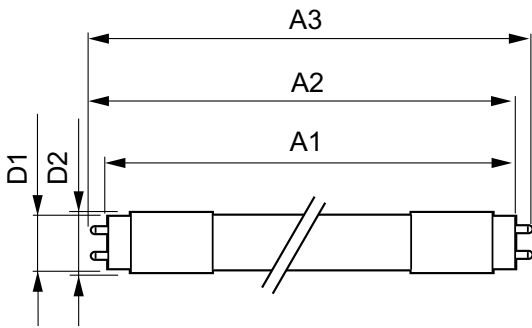
Energy-saving product	Yes
Approval marks	TUV CE marking RoHS compliance KEMA Keur certificate
Energy consumption kWh/1,000 hours	15 kWh

Product Data

Order product name	MAS LEDtube 1200mm UE 14.5W 840 T8
--------------------	------------------------------------

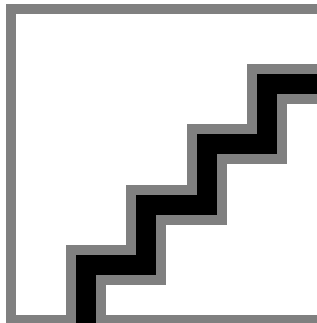
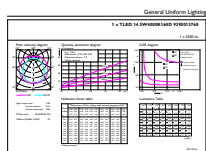
Full product name	MASTER LEDtube 1200mm UE 14.5W 840 T8
Full EOC	871869673150500
Order code	73150500
Material no. (12 NC)	929001376802
SAP numerator – quantity per pack	1
EAN/UPC – Product/Case	8718696731505
Numerator – packs per outer box	10
EAN/UPC – Case	8718696731512

Dimensional drawing



Product	D1	D2	A1	A2	A3
MAS LEDtube 1200mm UE 14.5W 840 T8	25.8 mm	28 mm	1,198.2 mm	1,205.3 mm	1,212.4 mm

Photometric data

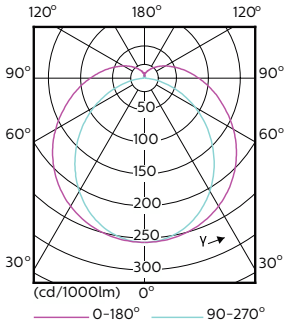


General uniform lighting - MAS LEDtube 1200mm UE 14.5W 840 T8

Spectral Power Distribution Colour - MAS LEDtube 1200mm UE 14.5W 840 T8

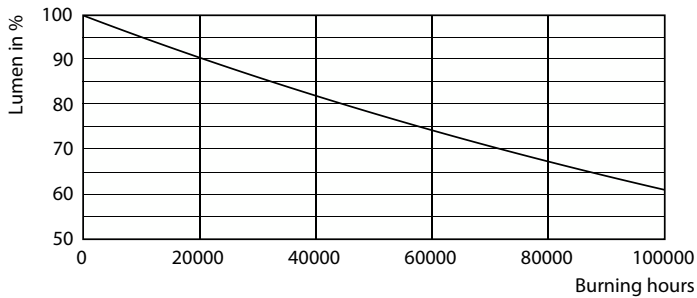
MASTER LEDtube EM/Mains

Photometric data

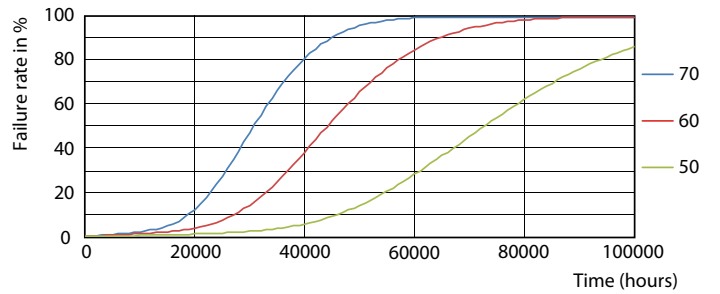


Light Distribution Diagram - MAS LEDtube 1200mm UE 14.5W 840 T8

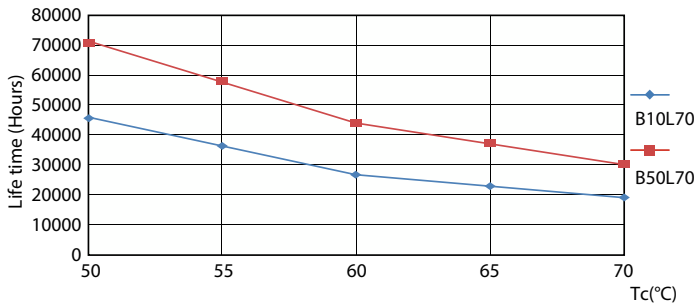
Lifetime



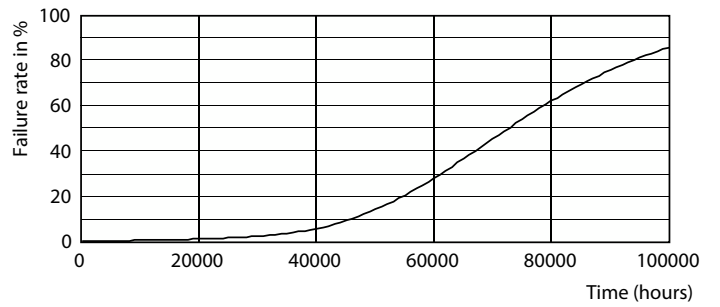
Lumen Maintenance Diagram - MAS LEDtube 1200mm UE 14.5W 840 T8



Life Expectancy Diagram - MAS LEDtube 1200mm UE 14.5W 840 T8



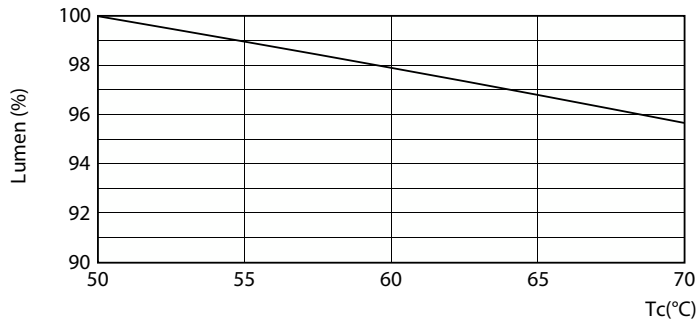
Life Expectancy Diagram - MAS LEDtube 1200mm UE 14.5W 840 T8



Life Expectancy Diagram - MAS LEDtube 1200mm UE 14.5W 840 T8

MASTER LEDtube EM/Mains

Lifetime



Lumen Maintenance Diagram - MAS LEDtube 1200mm UE 14.5W 840 T8

