

# MASTER LEDtube EM/ Mains

## MAS LEDtube 1200mm UE 14.5W 840 T8

The Philips MASTER LEDtube integrates a LED light source into a traditional fluorescent form factor. Its unique design creates a perfectly uniform visual appearance which cannot be distinguished from traditional fluorescent. This product is the ideal solution for up lighting in general lighting applications.

### Product data

General Information	
Cap base	G13 [ Medium Bi-Pin Fluorescent]
RoHS mark	RoHS mark
Nominal lifetime (nom.)	70000 h
Switching cycle	200000X
B50L70	70000 h h

Light Technical	
Colour Code	840 [ CCT of 4,000 K]
Beam Angle (Nom)	160 °
Lamp Luminous Flux 25°C EL (Nom)	2500 lm
Lamp Luminous Flux (Nom)	2500 lm
Rated beam angle	160 °
Colour Temperature, horizontal (Nom)	4000 K
Colour consistency	<6
Colour Rendering Index,horiz (Nom)	83
LLMF at end of nominal lifetime (nom.)	70 %

Operating and Electrical	
Input frequency	50 to 60 Hz

Power (Rated) (Nom)	14.5 W
Lamp current (max.)	74 mA
Lamp current (min.)	56 mA
Starting time (nom.)	0.5 s
Warm-up time to 60% light (nom.)	0.5 s
Power factor (nom.)	0.9
Voltage (Nom)	220-240 V

Temperature	
T ambient (max.)	35 °C
T ambient (min.)	-20 °C
T storage (max.)	65 °C
T storage (min.)	-40 °C
T-Case maximum (nom.)	55 °C

Controls and Dimming	
Dimmable	No

# MASTER LEDtube EM/Mains

## Mechanical and Housing

Product length 1200 mm

## Approval and Application

Energy efficiency label (EEL) A++  
 Energy-saving product Yes  
 Approval marks CE marking RoHS compliance KEMA Keur certificate  
 Energy Consumption kWh/1000 h 15 kWh

## Product Data

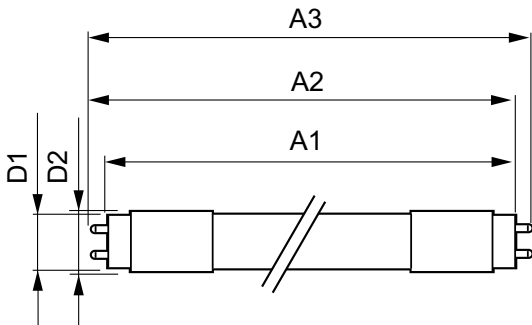
Full product code 871869673150500

Order product name MAS LEDtube 1200mm UE 14.5W 840 T8  
 EAN/UPC – product 8718696731505  
 Order code 929001376802  
 Numerator – quantity per pack 1  
 Numerator – packs per outer box 10  
 Material no. (12NC) 929001376802  
 Net weight (piece) 0.270 kg

## Warnings and Safety

• -

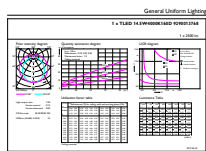
## Dimensional drawing



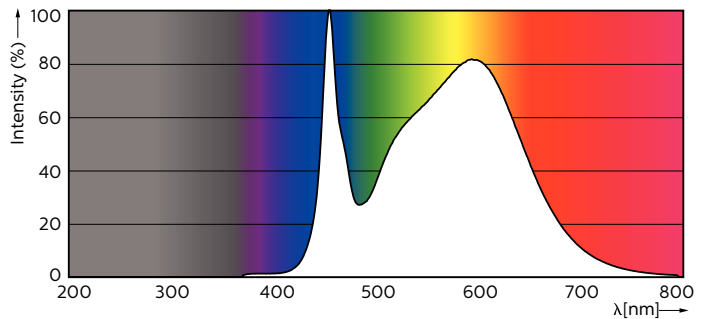
TLED 4ft 14.5-36W 2500lm 4000K G13 ND

Product	D1	D2	A1	A2	A3
MAS LEDtube 1200mm UE 14.5W 840 T8	25.8 mm	28 mm	1198.2 mm	1205.3 mm	1212.4 mm

## Photometric data



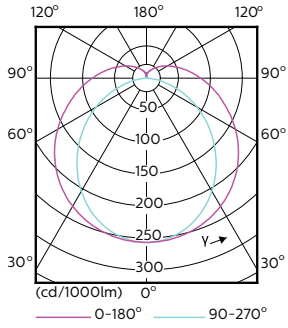
LEDtube 1200mm 15W G13 840 2500lm



LEDtube 1200mm 15W G13 840 2500lm

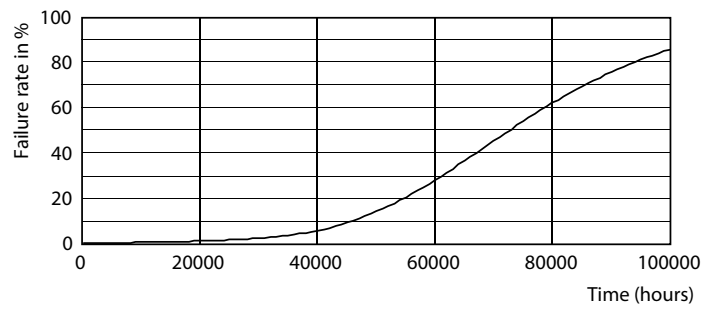
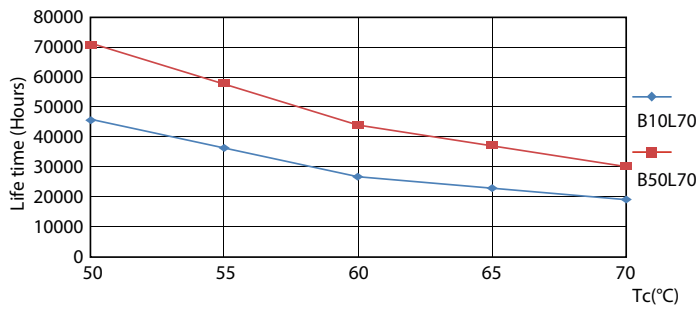
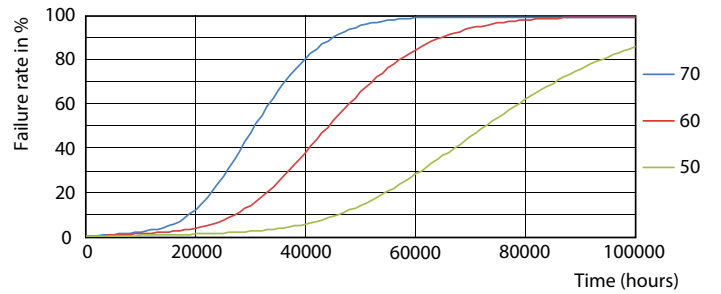
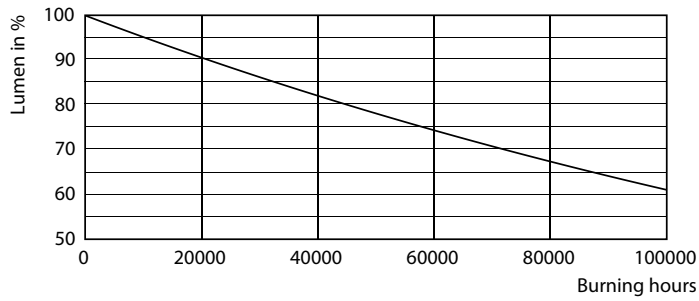
# MASTER LEDtube EM/Mains

## Photometric data



LEDtube 1200mm 15W G13 840 2500lm

## Lifetime



# MASTER LEDtube EM/Mains

## Lifetime

