



MASTER LEDtube EM/ Mains

MAS LEDtube 1200mm UE 14.5W 865 T8

The Philips MASTER LEDtube integrates a LED light source into a traditional fluorescent form factor. Its unique design creates a perfectly uniform visual appearance which cannot be distinguished from traditional fluorescent. This product is the ideal solution for up lighting in general lighting applications.

Product data

General Information		Power (Rated) (Nom)	
Cap base	G13 [Medium Bi-Pin Fluorescent]		14.5 W
RoHS mark	RoHS mark	Lamp current (max.)	74 mA
Nominal lifetime (nom.)	70000 h	Lamp current (min.)	56 mA
Switching cycle	200000X	Starting time (nom.)	0.5 s
B50L70	70000 h h	Warm-up time to 60% light (nom.)	0.5 s
Light Technical		Power factor (nom.)	0.9
Colour code	865 [CCT of 6,500 K]	Voltage (Nom)	220-240 V
Beam Angle (Nom)	160 °	Temperature	
Luminous flux (nom.)	2500 lm	T ambient (max.)	35 °C
Luminous flux (rated) (nom.)	2500 lm	T ambient (min.)	-20 °C
Rated beam angle	160 °	T storage (max.)	65 °C
Correlated colour temperature (nom.)	6500 K	T storage (min.)	-40 °C
Colour consistency	<6	T-Case maximum (nom.)	55 °C
Color rendering index (nom.)	83	Controls and Dimming	
LLMF at end of nominal lifetime (nom.)	70 %	Dimmable	No
Operating and Electrical			
Input frequency	50 to 60 Hz		

MASTER LEDtube EM/Mains

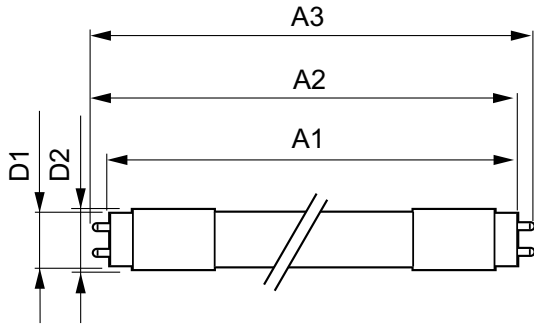
Mechanical and Housing	
Product length	1200 mm
Approval and Application	
Energy efficiency label (EEL)	A++
Energy-saving product	Yes
Approval marks	CE marking RoHS compliance KEMA Keur certificate
Energy Consumption kWh/1000 h	15 kWh
Product Data	
Full product code	871869673152900

Order product name	MAS LEDtube 1200mm UE 14.5W 865 T8
EAN/UPC – product	8718696731529
Order code	73152900
Numerator – quantity per pack	1
Numerator – packs per outer box	10
Material no. (12NC)	929001376902
Net weight (piece)	0.270 kg

Warnings and Safety

• -

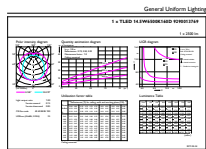
Dimensional drawing



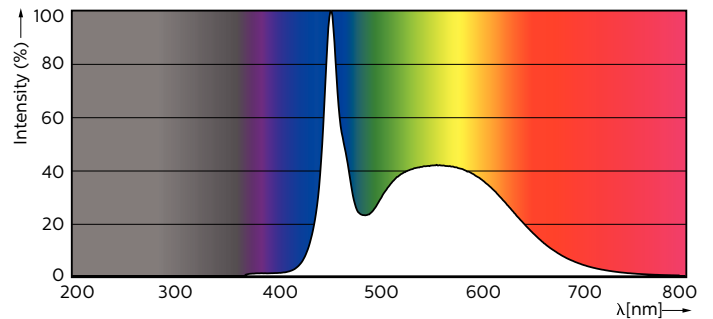
TLED 4ft 14.5-36W 2500lm 6500K G13 ND

Product	D1	D2	A1	A2	A3
MAS LEDtube 1200mm UE 14.5W 865 T8	25.8 mm	28 mm	1198.2 mm	1205.3 mm	1212.4 mm

Photometric data



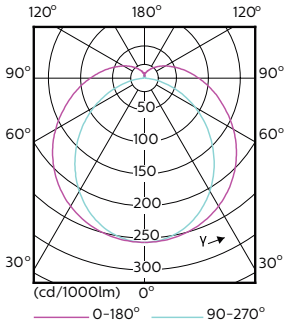
LEDtube 1200mm 15W G13 865 2500lm



LEDtube 1200mm 15W G13 865 2500lm

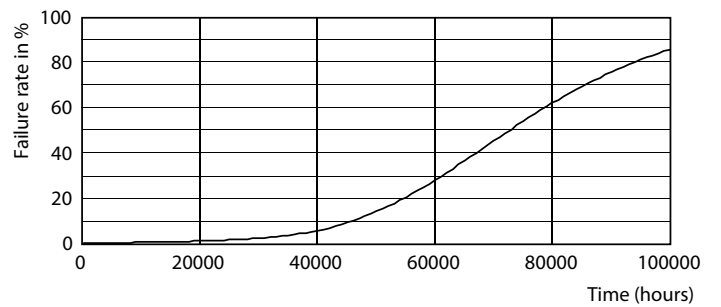
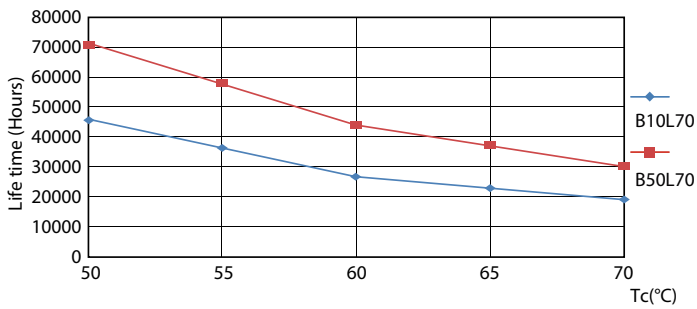
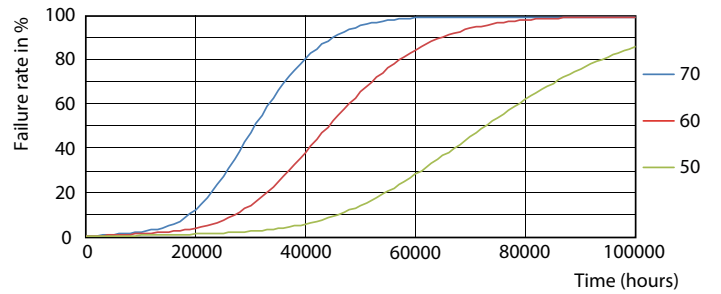
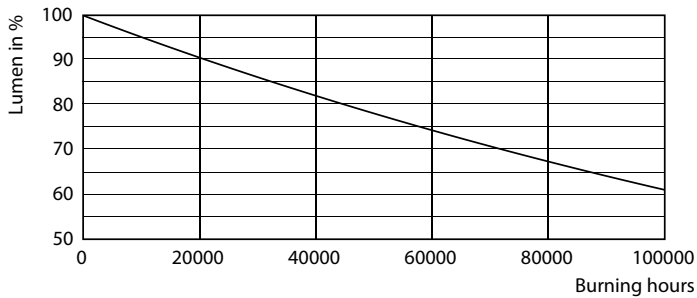
MASTER LEDtube EM/Mains

Photometric data



LEDtube 1200mm 15W G13 840 2500lm

Lifetime



MASTER LEDtube EM/Mains

Lifetime

