



MASTER LEDtube EM/ Mains

MAS LEDtube 1200mm UE 14.5W 865 T8

The Philips MASTER LEDtube integrates a LED light source into a traditional fluorescent form factor. Its unique design creates a perfectly uniform visual appearance which cannot be distinguished from traditional fluorescent. This product is the ideal solution for up lighting in general lighting applications.

Product data

General Information

Cap base	G13 [Medium Bi-Pin Fluorescent]
RoHS mark	RoHS mark
Nominal lifetime (nom.)	70000 h
Switching cycle	200000X
B50L70	70000 h h

Light Technical

Colour Code	865 [CCT of 6,500 K]
Beam Angle (Nom)	160 °
Lamp Luminous Flux 25°C EL (Nom)	2500 lm
Lamp Luminous Flux (Nom)	2500 lm
Rated beam angle	160 °
Colour Temperature, horizontal (Nom)	6500 K
Colour consistency	<6
Colour Rendering Index,horiz (Nom)	83
LLMF at end of nominal lifetime (nom.)	70 %

Operating and Electrical

Input frequency	50 to 60 Hz
-----------------	-------------

Power (Rated) (Nom)	14.5 W
Lamp current (max.)	74 mA
Lamp current (min.)	56 mA
Starting time (nom.)	0.5 s
Warm-up time to 60% light (nom.)	0.5 s
Power factor (nom.)	0.9
Voltage (Nom)	220-240 V

Temperature

T ambient (max.)	35 °C
T ambient (min.)	-20 °C
T storage (max.)	65 °C
T storage (min.)	-40 °C
T-Case maximum (nom.)	55 °C

Controls and Dimming

Dimmable	No
----------	----

MASTER LEDtube EM/Mains

Mechanical and Housing

Product length 1200 mm

Approval and Application

Energy efficiency label (EEL) A++
 Energy-saving product Yes
 Approval marks CE marking RoHS compliance KEMA Keur certificate
 Energy Consumption kWh/1000 h 15 kWh

Product Data

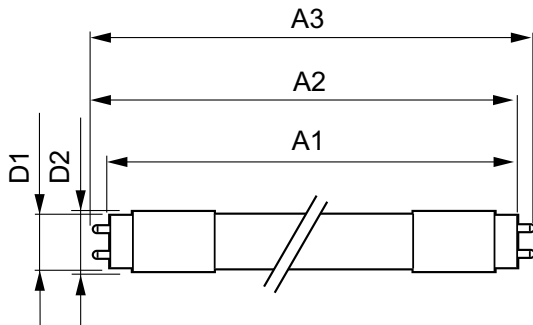
Full product code 871869673152900

Order product name MAS LEDtube 1200mm UE 14.5W 865 T8
 EAN/UPC – product 8718696731529
 Order code 929001376902
 Numerator – quantity per pack 1
 Numerator – packs per outer box 10
 Material no. (12NC) 929001376902
 Net weight (piece) 0.270 kg

Warnings and Safety

• -

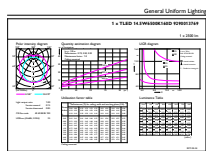
Dimensional drawing



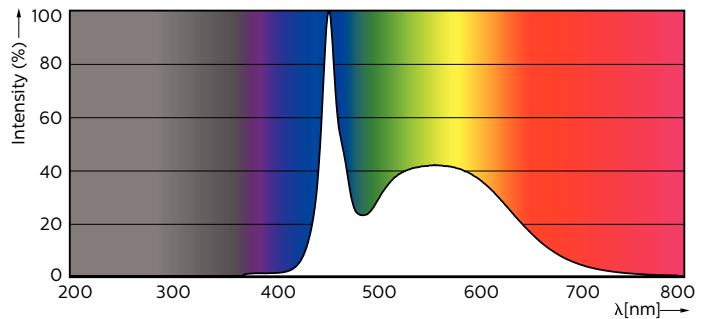
TLED 4ft 14.5-36W 2500lm 6500K G13 ND

Product	D1	D2	A1	A2	A3
MAS LEDtube 1200mm UE 14.5W 865 T8	25.8 mm	28 mm	1198.2 mm	1205.3 mm	1212.4 mm

Photometric data



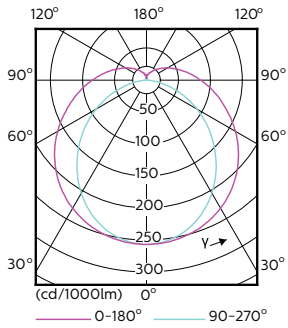
LEDtube 1200mm 15W G13 865 2500lm



LEDtube 1200mm 15W G13 865 2500lm

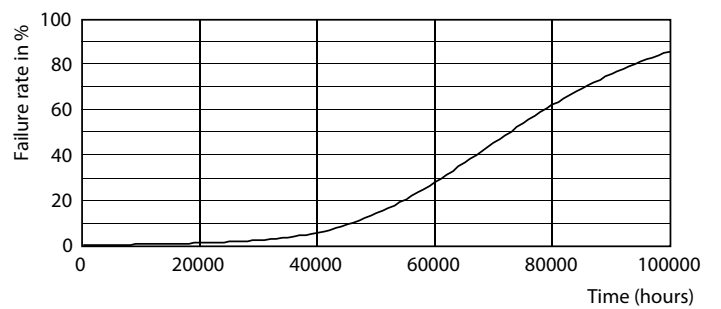
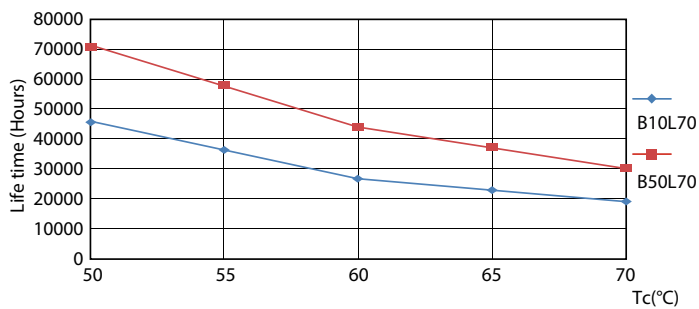
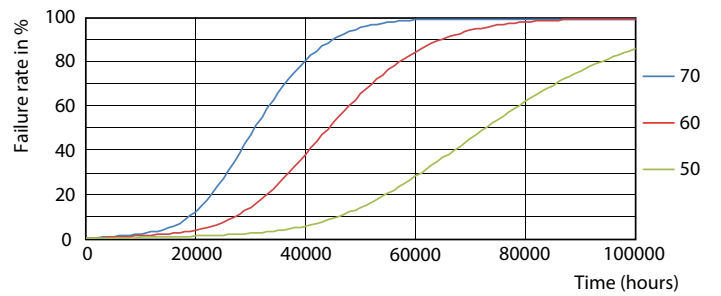
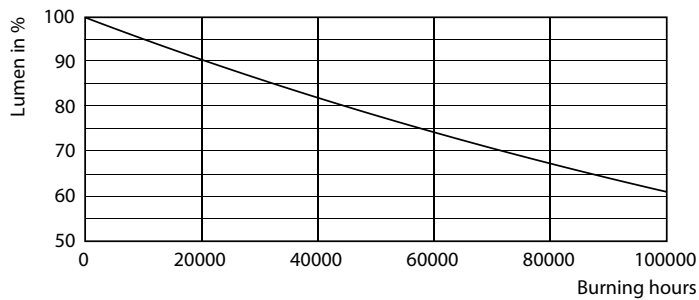
MASTER LEDtube EM/Mains

Photometric data



LEDtube 1200mm 15W G13 840 2500lm

Lifetime



MASTER LEDtube EM/Mains

Lifetime

