



MASTER LEDtube EM/ Mains

MAS LEDtube 1500mm UE 21.5W 840 T8

The Philips MASTER LEDtube integrates a LED light source into a traditional fluorescent form factor. Its unique design creates a perfectly uniform visual appearance which cannot be distinguished from traditional fluorescent. This product is the ideal solution for up lighting in general lighting applications.

Product data

General Information		Power (Rated) (Nom)	
Cap base	G13 [Medium Bi-Pin Fluorescent]		21.5 W
RoHS mark	RoHS mark	Lamp current (max.)	111 mA
Nominal lifetime (nom.)	70000 h	Lamp current (min.)	83 mA
Switching cycle	200000X	Starting time (nom.)	0.5 s
B50L70	70000 h h	Warm-up time to 60% light (nom.)	0.5 s
Light Technical		Power factor (nom.)	0.9
Colour Code	840 [CCT of 4,000 K]	Voltage (Nom)	220-240 V
Beam Angle (Nom)	160 °	Temperature	
Lamp Luminous Flux 25°C EL (Nom)	3700 lm	T ambient (max.)	35 °C
Lamp Luminous Flux (Nom)	3700 lm	T ambient (min.)	-20 °C
Rated beam angle	160 °	T storage (max.)	65 °C
Colour Temperature, horizontal (Nom)	4000 K	T storage (min.)	-40 °C
Colour consistency	<6	T-Case maximum (nom.)	60 °C
Colour Rendering Index,horiz (Nom)	83	Controls and Dimming	
LLMF at end of nominal lifetime (nom.)	70 %	Dimmable	No
Operating and Electrical			
Input frequency	50 to 60 Hz		

MASTER LEDtube EM/Mains

Mechanical and Housing

Product length 1500 mm

Approval and Application

Energy efficiency label (EEL) A++
 Energy-saving product Yes
 Approval marks CE marking RoHS compliance KEMA Keur certificate
 Energy Consumption kWh/1000 h 22 kWh

Product Data

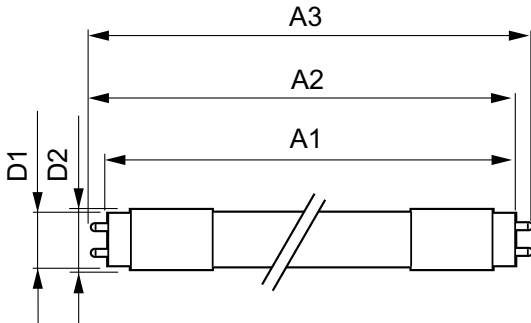
Full product code 871869673154300

Order product name MAS LEDtube 1500mm UE 21.5W 840 T8
 EAN/UPC – product 8718696731543
 Order code 929001377002
 Numerator – quantity per pack 1
 Numerator – packs per outer box 10
 Material no. (I2NC) 929001377002
 Net weight (piece) 0.270 kg

Warnings and Safety

• -

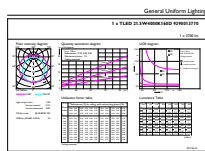
Dimensional drawing



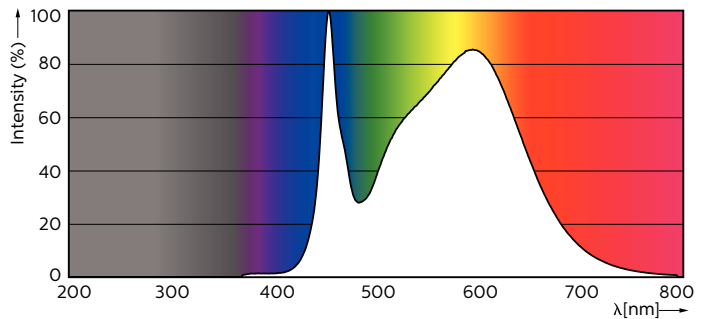
TLED 5ft 21.5-58W 3700lm 4000K G13 ND

Product	D1	D2	A1	A2	A3
MAS LEDtube 1500mm UE 21.5W 840 T8	25.8 mm	28 mm	1498.8 mm	1505.9 mm	1513 mm

Photometric data



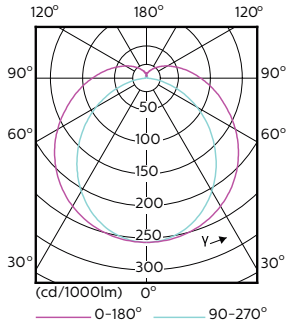
LEDtube 1500mm 22W G13 840 3700lm



LEDtube 1500mm 22W G13 840 3700lm

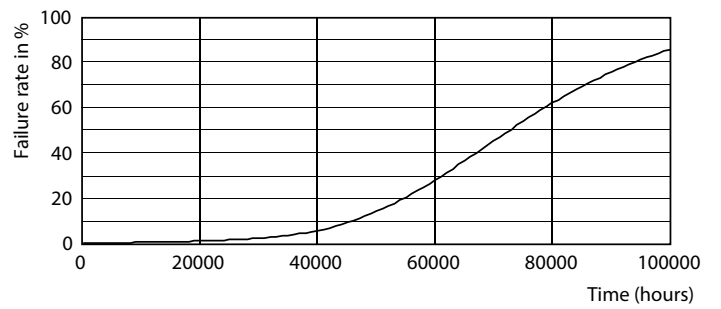
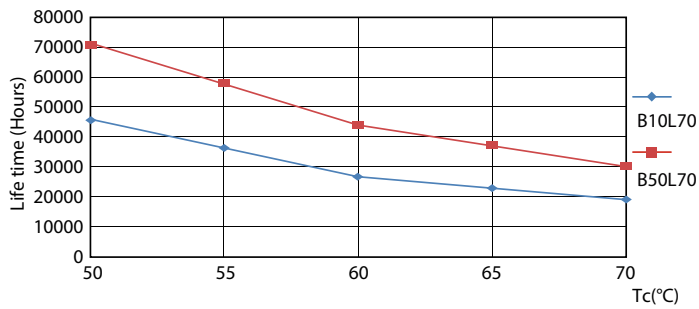
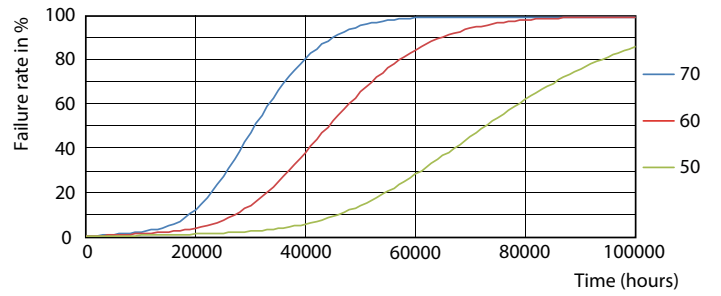
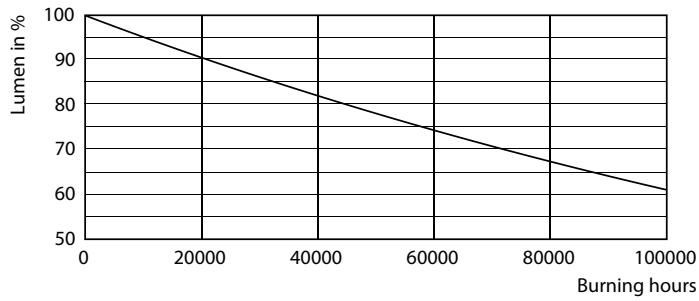
MASTER LEDtube EM/Mains

Photometric data



LEDtube 1200mm 15W G13 840 2500lm

Lifetime



MASTER LEDtube EM/Mains

Lifetime

